

# TSC OVERLAY

• Gecko Electronics Inc. •

## INSTALLATION INSTRUCTIONS



Gecko Electronics Inc.,  
450 des Canetons, Quebec City (Cq), Canada, G2E 5W6, 1.800.78.GECKO, Fax: 418.872.0920  
419 S. Las Posas Rd, San Marcos, CA, USA, 92069, 1.877.78.GECKO, Fax: 760.736.3697  
[www.gecko-electronic.com](http://www.gecko-electronic.com)



NOTE

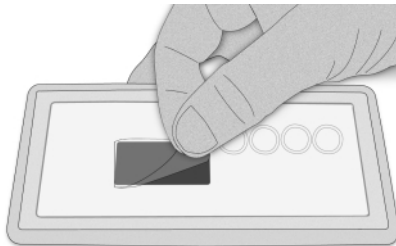
Please note that the following installation procedure is similar for all TSC overlays.

INSTALLATION

To properly install an overlay on a keypad, you only need a hair dryer, paper towel and rubbing alcohol.

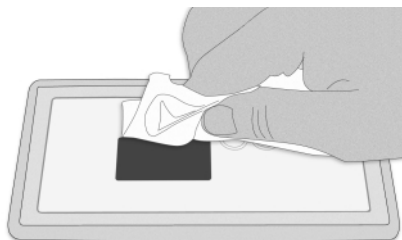


First, peel off the plastic film that protects the LED display window.



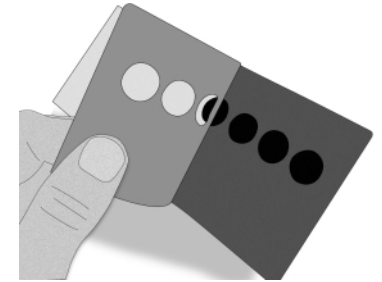
OVERLAY

Clean the surface of the keypad with an alcohol saturated paper towel.

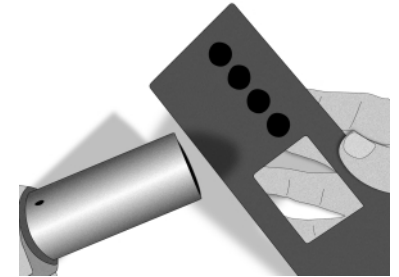


OVERLAY

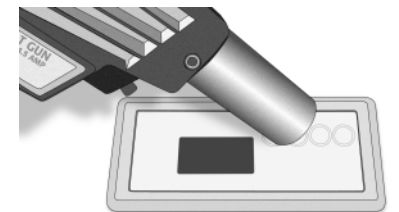
Peel off the protective paper from the back of the overlay.



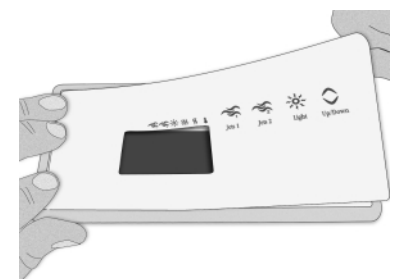
Gently heat up the back of the overlay with the hair dryer.



Then, also heat up the surface of the keypad with the hair dryer.



Place the overlay on the keypad starting on the left side. Make sure the overlay is properly aligned and rests perfectly in the recess of the keypad.



Make sure that the overlay is properly glued down by pressing with your finger over the entire surface.