

## 6 PERSON SPA (INCLUDING 1 LOUNGER)

This generously equipped, self contained spa comes complete with a knotty cedar wood cabinet, heat retaining hard cover and grey jets. It will be ready to provide a warm, relaxing massage 24 hours a day thanks to its integral heater, ozone system and dedicated circulation pump. The water massage is provided via 20 hydrotherapy jets while the air massage is provided via 12 dedicated injection points from a heated air blower.

- ✓ 20 comfortably recessed hydrotherapy jets
- ✓ Powerful 3.1 Mkt. Hp dual speed hydrotherapy jet pump
- ✓ Integrated 3kW heater for water temperature up to 40°C / 104°F
- ✓ Dedicated Mini Miser™ circulation pump provides 24 hour filtration
- ✓ Freshwater™ ozone system for healthy water quality
- ✓ Heated champagne air bubbler system (with aromatherapy feature)
- ✓ Sun Glo underwater light
- ✓ Inclusive hard 3" tapered heat retaining cover
- ✓ Full Artic Plus™ heat insulation
- ✓ Easy to use digital control pad includes temperature display and full system control.



From Plastica Ltd, the UK's leading independent manufacturer and distributor of swimming pool and wet leisure goods with over 30 years experience.

Dimensions and specifications may vary without prior notice. Issue 2, supercedes previous issues

# GALILEO VSE

## 6 PERSON SPA (INCLUDING 1 LOUNGER)

### STRUCTURE

- Lucite acrylic sheet with 7 layer fibreglass construction
- Acrylic shell overlaps wood cabinet for water resistance and added comfort
- Textured finish adds safety to step and footwell
- Moulded acrylic hand grip
- Deluxe I-beam structural support frame
- Protective plastic base underliner
- Full Artic Plus™ foam heat insulation
- Pre stained knotty cedar wood cabinet

### 20 HYDROTHERAPY JETS

- 9 Superflo adjustable
- 6 Masseur™ (neck / shoulder)
- 1 Adjustable Foot Massage
- 2 Accu Pressure™ (kidney/lumbar)
- 1 Jumbo Storm Roto (footwell)
- 1 Dedicated non-adjustable return (from filter, heater & ozone)

### 12 AIR JETS

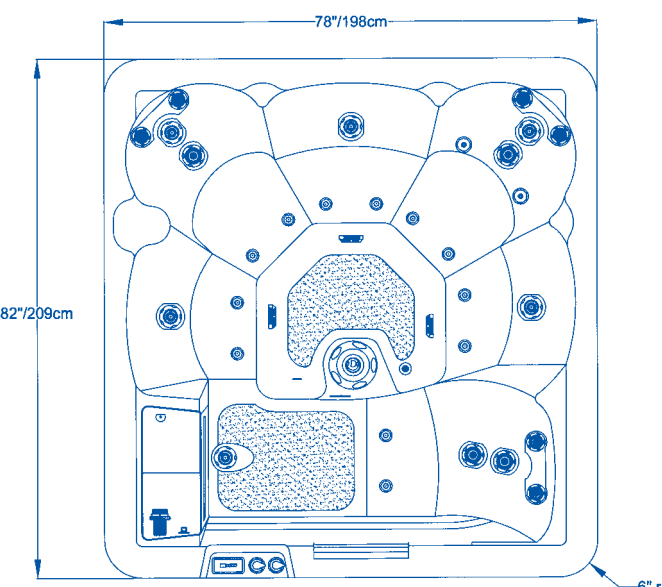
- Heated air injected via 12 dedicated, separate nozzles with aromatherapy option

### EQUIPMENT

- 3.1 Mkt. Hp dual speed jet pump provides hydrotherapy massage
- Heated air blower with aromatherapy feature
- Dedicated Mini Miser™ circulation pump provides 24 hour filtration
- Freshwater™ ozone system for healthy water quality
- Sun Glo underwater light
- Integral 3kW teflon coated heater
- S-SPA power pack operated from digital control pad

### PLUMBING

- 50 sq ft Whitewater™ filtration
- Silent air controls manage the mix of water and air from hydrotherapy jets
- Low drain and shut off valve to empty spa for water changes
- Air bleed/self prime system to aid re-filling/starting the spa



Dimensions and specifications may vary without prior notice.

### GALILEO SPA DATA

198cm x 209cm x 92cm high

(78" x 82" x 36" high)

Dry weight 264Kg (580lb)

Wet weight 1777Kg (3910lb)

Electrical supply: 230V single phase 32 Amp or 16 Amp on low current setting.

Water capacity 1265 litres (278 UK gallons)

*Your Local Supplier:*