



Line 500 User Guide

What's New?

existing users of Sage CS/3 or C2000

sage

active support for business

Version 3.0

Features

Description & Benefits

Euro support	A copy of the project specific technical information is also included in Section 4 of this Documentation Pack.
Security	The user security within Sage CS/3 allows individual organisations to define the level of security they require over their database. Security can be defined by individual user or groups of users and can be controlled to allow for database maintenance, viewing or reporting.
Product Configurator	Configure to Order allows for the controlled creation of complex products to be achieved through a simple rule based question and answer session. The result is the automatic generation of Bills of Material, Routes, Works Orders and Sales Orders. One question list produces a single source of all configured data which can be retained and fast searched for future duplication.. Configure to Order 'designs' a complex quality product that is derived from a simple procedure.
Generic Auditing	This new module allows for specific events to be audited by recording information relating to these events whenever they occur. Generally, these events are database updates. The audit module allows users to decide which parts of the database should be audited and subsequently provides means of interrogating the audit data for tracking of database changes relating to those events.
User Security	The new user security within CS/3 allows individual organisations to define the level of security they require over their database. Security can be defined by individual users or groups of users and can be controlled to allow for database maintenance, viewing or reporting.
Absorption Costing	This new module allows for the recording of company statistics that would be used for the automatic apportionment of costs within the General Ledger. For example, company headcount could be recorded by department allowing for the automatic apportionment of service costs, by department.
Inter-entity Accounting	The enhancements to Sage CS/3 in this area cover the input and generation of details relevant to Inter-Unit Accounting within the General Ledger.
Sub-Contracting	<p>Triggered directly from the Shop Floor via Work in Progress Tracking, the new Sub-Contract module enables the user to plan, control and report all points in the external intermediate operation cycle. A Picking Operation may be set up to plan the resource needed to select and pack the parts to be sent to the supplier.</p> <p>On commencement of the Outwork Operation, the user is given the option to support the transaction with documentation from the following selection:</p> <ul style="list-style-type: none">• Delivery Instructions• Kitting List• Sub-Contractor Completion Note• Instructions to Sub-Contractor• Sub-Contractor Return Document• Forwarding Documentation <p>Full normal Purchasing documents and procedures are utilised to reduce any fragmentation of the supply procedures.</p>
Vote Ledger	The Sage suite of software has been designed to enable a dual set of General Ledgers to provide both Accrual and Vote accounts from a single source of data entry.

Concurrency

This project is detailed as project specific technical information in Section 4 of this Documentation Pack.

Online Help

With the CS/3 3.0 release, Sage also released a new HTML and PDF based Documentation System. This supports the full CS/3 suite of modules, including Release 3.0 functionality, and REPLACES the original Windows help files previously shipped with CS/3.

The new help system is distributed on a separate CD with its own installation wizard. Two formats of HTML are provided - Compressed HTML and Standard HTML: the compressed, when installed on the client, is context linked to Sage CS/3.

Version 3.1

Features

Description & Benefits

Euro

Base Currency & Bank Account Conversion

Comprehensive conversion routines have been provided that enable enterprises to manage a smooth transition from a national accounting currency to the Euro, at any time during the current 'dual currency phase', in preparation for the cancellation of legal tender status for 'in' currencies by 1st July 2002.

These conversion routines effectively enable large international companies and small to medium-sized non-cash handling companies to start accounting internally in the Euro prior to 1st July 2002. It also allows companies to manage the change to a new currency to suit the market conditions rather than being forced to change at the busiest time of the accounting cycle.

The following conversions have been provided:

- **Base currency conversion** allowing a base currency to be changed to a new currency, including any associated currency rates. The conversion process enables conversion of the General Ledger base currency in isolation of the associated sub ledgers.
- **Bank currency conversion** allowing a bank account currency to be changed to a new currency. This conversion process is independent of any accounting conversions.

Multi-Currency Cash Transactions

Cash Payments and Receipts can now be entered and matched in any currency independent of either the currency of the associated original transaction, the currency of the bank account, or the base currency of the General Ledger.

This is particularly useful in supporting business transactions where invoices are generated in native national currencies with associated cash payments being made in Euro.

The functionality provides full visibility of open item and discount values in any one of the following currencies: -

- Currency of the original transaction (where account has been converted)
- Currency of the account
- Currency of payment

Accounts Payables supports multiple Payment Lists, created by discrete ranges of supplier or transaction type, with full currency visibility either as a single mixed currency list, or as multiple lists for each payment currency.

Preferred payment currencies by supplier are supported with full visibility of payment currency codes on cheques and remittance advices.



Commercial Papers

Multi Currency

Commercial Papers now supports foreign currency transactions with all currency conversions conforming to the Euro conversion rules (i.e. triangulation, and rounding to appropriate units of currency).

Both transaction currency and base currency values are now visible throughout the Commercial Papers processing cycle.

Payment Type Enhancements

General Ledger postings within Commercial Papers have been enhanced to provide flexible control by payment type. These controls include the letter status that should generate postings, and which accounts should be used for a particular Payment Type and status combination. The level of detail that should be posted to each account when processing batches of letters can also be defined.

The dishonouring of commercial papers can now take place at any status; this includes definition of the posting accounts for the dishonour process, and the type of new open item that should be generated from the process.

Payment Types can now be associated with a particular ledger (i.e. payment, receipt or both), with appropriate validation when defining Payment Methods against customers and suppliers, and when amending invoice payment details (i.e. Payment Types and Methods), in sales and purchase order processing.

Automatic honouring of commercial papers on presentation to the bank can now be defined by Payment Type.

Credit Checking

An optional Risk Period can now be defined for each Payment Type which represents the number of days following the due date of a commercial paper during which time it may be rejected by the bank and therefore dishonoured.

The Risk Period has been included in an enhanced credit check routine which is now used throughout Accounts Receivables and Sales Order processing.

The user now has the option to define credit limits in either base or native customer currency with the value of commercial papers appearing within the customer's outstanding balance up to the point at which the Risk period expires.

The Accounts Receivable Transaction Enquiry and Aged Debtor Report now provide summary balances for commercial papers at risk; The Enquiry now supports amendment of aged date with flexible defaults (i.e. today's date, start/end of financial period, start/end of calendar month).

Statement Processing

Accounts Receivables and Accounts Payables Statement generation has been enhanced to support generation of detailed statements and commercial papers for each individual Payment Term within an invoice. The user can now choose the level of transaction consolidation that should occur, and at the most detailed level generate the same volume of papers that would be produced at invoice time via Sales Order processing.

Preactor

This is the initial release for the integration between CS/3 and Preactor Finite Capacity Scheduling function. The functionality provides for export of production order information, and an import of scheduled information back into CS/3.

Export of data comprises of works orders (status of "awaiting issue" or "in progress" and MRP recommendations); this includes operation information (resources, times), product descriptions, and product groups.

Static Material Control (SMC) data includes the works order components and bill of material for MRP recommendations.

The export is provided in ASCII format using the CS/3 Report Writer Language, which is then processed by the Preactor Data Import option.

Import of data from Preactor converts the Preactor schedule output file into a CS/3 format schedule file. The standard CS/3 Works Order Update option can then be used to update the works orders with the schedule results, (allocated machines/operators and expected finish dates/time).

GUI Client

Local Printing

Local printing through the GUI client provides the ability to print spool files through the Windows printing sub-system local to the client PC, i.e. through printer resources which may be unknown to the Sage CS/3 server system. This is available from within the 'print view' of the GUI client, accessed using F11-View from the spool banner.

Access to Programs/Documents from the Menu

The GUI menu system has been enhanced to allow Windows programs and ActiveX documents to be presented and accessed through the menu system.

This feature uses the normal menu system to obtain a 'reference', which is then used to query the TCR (Tetra Configuration Registry) to locate details of the program or document to associate with the menu option.

FCE Invocation through Buttons on Forms

Form Control Extensions (FCEs) may now be invoked directly from a button placed on the form. The FCE buttons are added to the form via the GUI Screen Form Designer, the button must be 'associated' with the field that has an FCE.

The FCE buttons are always enabled however modifications to field data made by the FCE are only saved if the field in question is enabled for user input.

This feature requires the same components as for Combo-box Controls.

Combo-box Controls on Forms

In addition to the edit fields, static labels, and check boxes, combo-boxes have now been enabled through the GUI Forms.

Two styles of combo-boxes are available: -

- **Dropdown list** allowing for selection of data from the list only. These can only be implemented when validation is turned on for a field.
- **Drop Down** allowing for selection from a list, but also includes an edit control in which the user may enter any other data (i.e. data not in the list). This can be implemented when validation values are provided against a field, but when validation is 'turned off', the validation values then become 'hints' for the user.

On the combo-box, the down-arrow both drops down the list and changes the selection. When a combo-box list is dropped down, the CR and ESC keys accept the selection and cancel the list, or dismiss the list respectively (that is, in the drop down state, the key is not interpreted as a standard Sage CS/3 User Action).

Fields may be changed to a combo-box type through the GUI Screen Form Designer.

Invocation of User Actions through Buttons on Forms

'User Actions', for example F2-Browse, CR-Accept, ESC-Abandon etc, are currently shown on the Actions tool bar, or under the Actions menu. These actions may now be implemented through buttons added to the form using the GUI Screen Form Designer.

User Actions Buttons may or may not be associated with a field on the form. If there is an association, then selecting the button simulates the User Action, with the focus on the field with which it is associated. Note: There are instances where a User Action will have different results depending on the field that has the focus.

Drill Down to Report Writer Reports with Form Data

The invocation of Report Writer reports has been modified to allow arguments to be passed to the report. This allows for a meaningful invocation of a Report Writer report via drill down, on the basis of form data, e.g. a report on the customer's sales history from within SOP Order Entry.

For optimum integration with standard Sage CS/3, the Tools/Options/Drill Down setting "Create new application in same frame window" must be checked, this makes the report appear as an integral part of the application in question.

Colour Editor

The Colour Editor is a new feature that allows user configuration for the colours shown on individual input fields (background and text) on forms.

Java Supported HTML Help from the GUI Client

With the 3.1 release, a Java TOC supported version of the standard CS/3 online help files will be available, as an alternative to the currently shipped compressed help files. This new, flat html format allows users to edit the component html files and therefore customise their online help. When installed on a web server, form-level context links from the GUI Client are provided via a perl script, and both IE and Netscape browsers are supported.

Web Sales

Web Sales offers the benefits of real-time web transactions and creating value by connecting buyers with suppliers quickly and efficiently. Web Sales provides an online, integrated web store that allows your customers to order goods and services anytime of the day or night. Web Sales provides tight integration between Enterprise and the eCommerce web site. This means that customers can use the Internet to dynamically browse product information, gain access to customer and product inventory information and create and track orders.

Project Documentation

This release includes on-line 'Project Documentation', describing new applications functionality within Sage CS/3. This documentation is provided in HTML format on a separate, read-only CD with your 3.1 media. On-screen 'walkthroughs' are included which take users through the changes and additions to functionality introduced in this release. The CD covers ALL released projects within CS/3.

Version 4.0

Features

Description & Benefits

Web Sales

A set of tools to create a Microsoft Commerce Server web shop integrated into the back end system.

Web Portal SDK

Delivers role based access to 3rd party and Sage products over the intranet or internet.

Project Billing

This new module is a major advancement in the Project Accounting suite and is designed to satisfy the Billing Requirements of Project Related Businesses.

This extension now provides users with the ability to generate project related invoices that are mapped to actual or contractual events. In either case, the value can be calculated on a Time and Materials basis or as a staged payment at a fixed price. Alternatively, the billing for this can be done by an amount or percentage and is triggered by date, milestone, project status, or WIP value. Revenue recognition is flexible and automatic accruals can be generated to match these events.

**COP Base Currency
Conversion Reservations
and commitment
Extensions**

Extension the currency conversion routines that will now include Commercial Papers.

This provides extended visibility of Project Commitments. Two new commitment summaries have been added to the General Ledger and Project Ledger which allow the user to view or print the 'current' and 'gross' commitment summaries from the Commitment Enquiry and Commitment Report options respectively. The following are some of the major features :-

Commitments can now be created directly from purchase orders, where previously they could only be created from requisitions.

When enquiring on, or printing commitments, additional information is now displayed. This includes remaining budget, supplier code and name, our reference number, any text for a 'comment only' requisition, and total journal commitments.

The reserves program has been extended to cater for Project Ledger allocations, as well as those for General Ledger. This allows the project and expense code details to be available to the user.

If several Reserve Journals are being run in a period, a copy of the last journal posted is now maintained, so that this can be reversed before a new journal is posted, automatically ensuring that items cannot be posted more than once.

A new option has been added to General Ledger to allow users to post commitment journals from here, rather than through purchase orders or requisitions.

Project Ledger Commitment Enquiry has been enhanced to allow the user to enquire by requisition number or purchase order number.

Budget checking has been enhanced to check against Project Ledger budgets as well as General Ledger budgets.

When posting a POP invoice, the posting to the Commitment Summaries is delayed until the Accounts Payable batch is posted. This only occurs when not posting directly to the General Ledger.

POP invoice lines are prevented from being marked as 'fulfilled' if there are unposted invoices for the order line concerned.

Logix Integration

DPS's LogiX product provides 'best of breed' solutions for the routing and scheduling of transport resources, and plugs a significant gap in CS/3 functionality. Additional data, which refers to a customer's delivery point and to the volume/weight of product, has been added to the Sage system, enabling the full function of the DPS LogiX product to be utilised by the user. Routes, timings and drop sequence numbers are returned to the Sage system where distribution tasks have been enhanced to enable selection by load, carrier, delivery, or batch during the picking and shipment cycle. Full reporting from both systems introduces a new framework of Cost and KPI measurements.

Spool File Cleardown

Provides for the ability to clear spooled data by user, date, module or paper type.

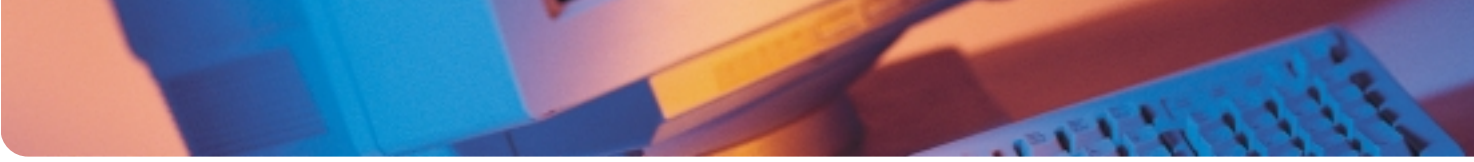
Italian Function

A number of initiatives have been developed, primarily to support Italian Legal and Fiscal requirements. These include: -

- Centrally produced daybooks
- Chronologically sequenced transaction references by effective date
- The introduction of period 20 to allow for year end closing balancing journals
- Chronological protocol numbers by VAT Register

Waste Management

This new module provides support for EU Waste Management regulations where two methodologies have been adopted - one for the UK and one for Germany. The majority of EU members are adopting the German approach and therefore this module has been designed to support both methods within one, generic, solution. The initial release develops the Recovery and Recycling requirements retrospectively, by extracting the relevant transactions from the selected historical



period and then building the Packaging from data and structures stored against the products or product types. Depending on the country location of a company, the German and UK types of system can automatically be active within one multi-company environment. Further releases will introduce facilities to dynamically build the Packaging as the transaction occurs.

Credit Management

This new module provides an integrated Call Logging and Transaction Enquiry facility for Credit Controllers. The new functions bring Credit Control up to speed for today's ever faster moving business cycle. Some of the major features includes: -

Customer credit status.

Customer's credit controller details.

A 'to do' list for each credit controller.

Daily browse of a particular credit controller's to do-list.

Call entry and maintenance for a particular customer.

Sales orders can now be viewed for a specific order number without running the Sales Enquiry program.

Reminder Letters can now be printed for a specific customer and severity without running the Reminder Letters program

Statements can now be displayed for a specific customer without running the statements program.

The ability to erase calls before a specific cut-off date.

Report of all customers who have promised cheques within specified date ranges.

Call details can be enquired on from within Transaction Enquiry.

3 Way Matching and Variance Analysis

The "3 Way Match" facility allows for the matching of a purchase order, receipt and invoice, within user defined tolerances and the automatic authorisation of the invoice. User entry of delivery, invoice quantity, invoice line value and price tolerances on each line of Purchase Orders enable the system to check the flow during the receiving and invoice stages. Default values can be set up by Product Group if desired. These can then warn of a violation or pass the process automatically to the next stage. Data from the Supplier Contracts facility, which is also released in this version, is fully compatible with these new features.

Variance Analysis utilises this data to provide journal creation and posting of variances generated from the data in 3 Way Matching at the Purchase Orders, Purchase Receipts and Purchase Invoice stages. This data updates a purchase variance history file that holds information, for each order line, about the planned (contracted) exchange rate, actual exchange rate, standard cost, purchase price, invoice price, receipt quantity and invoice quantity. Journals generated from this data are used to post the variations to General Ledger Accounts nominated in an extension to a posting reference table or defaulted by settings in the System Manager.

Supplier Contracts

The Supplier Contracts facility enables Purchase Contracts to be managed. Purchase orders can be generated (called-off) either directly via the Purchase Order Processing option or via Material Requirements Planning.

All the details commonly associated with a Supplier Contract can be recorded, including payment terms delivery terms and suspension reasons specific to the contract and an exchange rate if the contract is for a foreign currency supplier.

'Allowed Activities' give selected users the authority to enter supplier contracts and suppliers data has been amended to include a 'Parent' field which holds another supplier code as being defined as the parent of the current supplier.

Call off and delivery quantity tolerance formulae are recognised as part of the original contract when used in conjunction with the new Invoice Matching facility giving excellent automatic control especially when the 'call off' mode is used.

'Calling-off' a supplier contract, via the manufacturing process, or manually, results in the generation of a Purchase Order. All, or selected lines on the contract, or the recommendations generated via Material Requirements Planning can be split into several parts, and added to the Purchase Order,. 'User Supplier Comments' makes comments that are specific to the user /contract/ supplier combination in use available to be added to the Purchase Order.

All call-off orders made against a line on a supplier contract, as well as any receipts and invoices can be viewed via Contract Enquiry. Where applicable, remaining balances will be displayed for the contract and a drill-down will show the difference between the quantity ordered and the quantity delivered so far. As defined in Invoice Matching, tolerances will allow the receipts to slightly exceed or fall below the exact contracted quantity.

G/L Reserve Accounting has been extended to include contracts not actioned and there is an option to include or exclude contracts that have a 'held' status.

Finally, Purchase Invoices are checked to see whether any contract payment terms exist and either the contract or the supplier payment terms can be accepted.

A suppliers fax number can now be printed on a purchase order.

Supplier Fax Details

Intrastat Declaration Enhancements

With the withdrawal of support for plain paper supplementary declarations to HM Customs and Excise, alternative methods of submitting the Intra EC Trade Statistics - Supplementary Declarations (SD's) to HM Customs and Excise (HMCE) in the UK. have been provided. The current EC Intrastat report has three new options which create the following:

A comma separated variable (CSV) file for bulk loading to the HMCE Internet form.

A new report which fits the standard HMCE forms C1500 and C1501 (arrivals/departures), which is forms based.

A new plain paper report - EC Intrastat C1500/C1501 Listing - has replaced the old legal format.

Passive Warehouse Management

Inventory Control has been given improved 'Passive' data facilities when used in both a single and a multi-warehouse environment. Some of the major features provided are: -

Hierarchical (Branch) Warehouse Groups - Warehouses are grouped into logical or physical 'Branches' and users are attached to one or more Branches depending on their operating needs. These groups direct the user's access to products in the Group Warehouses within Sales, Purchase and Inventory transactions without the necessity to search the entire company.

Requisitions can now be directed to separate delivery addresses.

The new Warehouse Structures allow Products to have a Master record which enables automatic maintenance of all related product Stock, BOM and Route information.

Provision of stock summaries by bin, with stock allocations by bin priority.

Warehouses now have the capability to contain Bins within Zones and Sales Order Pick Lists use this to sequence the list.

The Works Order pick list now shows ALL active bins, not just prime pick location. Will show bins in pick sequence (FIFO) with appropriate lots & quantities.

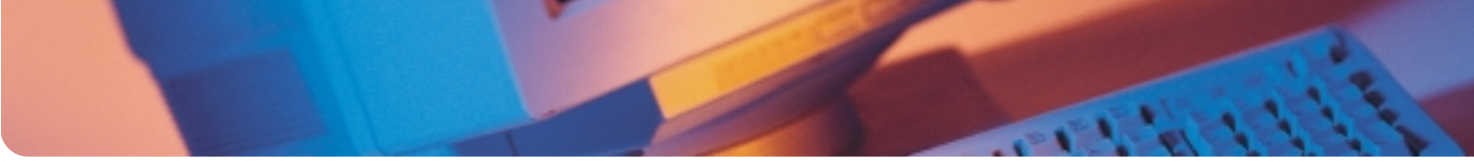
Version 5

Features

Description & Benefits

Product Hierarchies

Good analysis of stock levels, sales and purchases can reduce working capital and greatly improve profitability. This functionality provides enhanced product analysis that is critical to these activities. This is achieved by adding a further three product group codes to bring the total to six per product or service and by providing enhanced validation on these codes.



All key reports in the inventory, sales and purchasing modules have been enhanced to allow selection and sort on the new codes.

New product hierarchy functionality further increases the potential for detailed analysis of sales, purchases and stocking levels.

Extended Discounts

In some business environments there is a requirement for multiple discounts, recorded separately, on a single order line. In these complex scenarios it is especially important to automate this to avoid errors and speed processing. This project provides functionality to manage a number of more complex discounts automatically, including:

- part/full discount,
- simple discount/amount,
- cumulative/threshold discount

Multiple discounts may be calculated on an order line and also at order level and percentage calculations may be based on list price or price so far.

Free of charge items may be added automatically dependent on flexible rules.

Additional manual discounts may be applied.

Invoice formats are flexibly defined to allow a variety of presentations of the discounts and analysis is available to provide full control and audit of discounts given.

Client enhancements & utilities

These enhancements extend the available utilities in order to improve both the functionality and the usability of the GUI Client. These include image support providing a richer more intuitive interface and templates for launching other applications providing ease of integration and improving productivity.

Enhanced client configurability

The extended Forms Designer now supports the design of both screen and print forms, with this utility for existing GUI client users. This lowers costs and administrative overheads.

Extended drill-down functionality

Seventeen new drill-downs have been added, increasing access to information, improving processing speeds and make the system even easier to use.

Improved usability

The Printer Wizard automatically configures network printers, thereby streamlining implementation and improving usability.

An improved Database Tuning Wizard simplifies the task of maintaining the Microsoft SQL Server 2000 database, to give optimum performance at reduced cost

Centralised Data storage

All application and system data is now held inside the database. This means less administration, and provides transaction integrity for all data. As all data (excluding text based forms) is now held within the SQL Server Database, it is possible for other vendors to have access to all enterprise wide information through a common interface. The rationalisation of data storage also improves scalability as potential data bottlenecks have been removed.

Client invocation control system

This functionality allows a Sage option, such as Sales Order Enquiry, to be started directly from another program or application, rather than from the Sage explorer menu. Typically, this allows Sage to be used from a customer's own application, such as an Intranet Portal. This allows higher levels of integration of Sage within their own environment as well as simpler domain level access to individual user. Additionally, users are automatically validated so alleviating the need to re-login.

Previously referred to as the 'Web Portal', this functionality is provided in both the GUI Client and the Web Client.

XML Interfaces

XML Interfaces comprises a suite of functions to enable Sage Enterprise applications to send and receive XML format business documents. This provides the ability to process key business transactions such as Purchase Order (out) & Sales Order (in) as well as their corresponding acknowledgments as XML format documents. It also includes integrated support for Microsoft BizTalk Server 2000 as the message transport mechanism as well as published XML schema

Product Configurator Enhancements

Integration with the Project Ledger is now possible by populating the project and expense codes on each order line.

A new function is provided to enhance foreign currency functionality, allowing values to be converted from one currency to another using exchange rates derived from the currency files. This is compatible with the Euro currency functionality.

Enhanced payment terms have been added. This allows use of both Commercial papers and the wider range of due date calculations available for sales orders generated from this module.

Project Billing European Enhancements

This project adds provides functionality to support some of the more complex of the European VAT requirements including the management of deferred VAT and the recording of invoicing when a company has more than one VAT registration.

Enhanced payment terms have been added. This allows use of both Commercial papers and the wider range of due date calculations available for invoices generated from this module.

Foreign currency handling has been enhanced to support Euro exchange rates where appropriate. Both foreign and base currency totals can now be printed on the invoice.

COP in Quotations and Scheduled Orders

This functionality brings Quotations, Standard Orders and Scheduled Orders in line with the enhanced payment and Commercial paper functionality.

Accounts Receivable Multi-Currency

This project provides full multi-currency functionality in the Accounts Receivable ledger which positions us for further enhancements to S.O.P Invoicing.

In Accounts Receivable invoices can be entered and posted in any currency not just customer currency.

Commercial Papers may be produced in any currency instead of only the customer's currency.

Serial Number Entry Enhancement

This project improves the speed and accuracy of entry of large number of serial numbered items via Works Order Completion and Purchase Order Receipts.

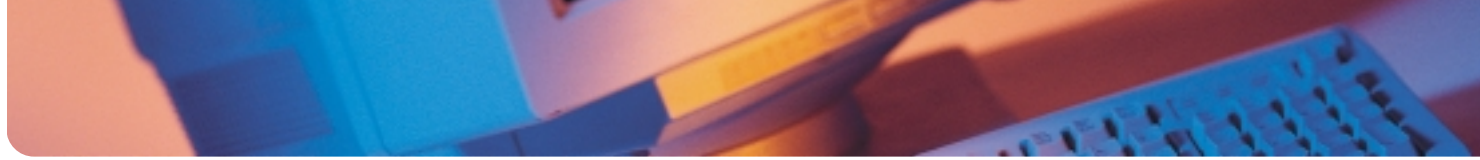
VAT on Order Acknowledgments

This project enables printing of a VAT table in the footer section of the Sales Order Acknowledgement. Where this option is chosen the total value will be inclusive of VAT. This is useful in a business-to-consumer environment where payment is expected before the goods are dispatched.

Print Control Extensions

This gives the option to print report output as XML. This greatly increases the ability to integrate the output with other applications and make use of a wider range of print processing output by allowing integration with third party printing applications. The benefits of this allow output in a variety of formats such as HTML but also support for output in languages such as Arabic.

Sage CS/3 Version 3.0	CS/3 V3	CS/3 V3.1	CS/3 V4	Line500 V5
Product Configurator Module	✓	✓	✓	✓
Generic Auditing Module	✓	✓	✓	✓
Absorption Costing Module	✓	✓	✓	✓



Sub-Contracting Module	✓	✓	✓	✓
Basic Euro support	✓	✓	✓	✓
Enhanced Security access	✓	✓	✓	✓
Enhanced User Security	✓	✓	✓	✓
Inter-entity Accounting	✓	✓	✓	✓
Vote Ledger functionality	✓	✓	✓	✓
HTML Online Help	✓	✓	✓	✓
Web Sales		✓	✓	✓
Preactor Finite Capacity Scheduling		✓	✓	✓
GUI Client enhancements		✓	✓	✓
Full Euro support		✓	✓	✓
Commercial Papers enhancements		✓	✓	✓
Online Project Documentation		✓	✓	✓
Context sensitive Help		✓	✓	✓
Credit Management Module			✓	✓
EU Waste Management regulations module			✓	✓
Project Billing Module			✓	✓
Distribution Route Planning			✓	✓
Italian Legal & Fiscal support			✓	✓
Web Portal SDK			✓	✓
Commercial Papers enhancements			✓	✓
3 Way Matching and Variance Analysis			✓	✓
Supplier Contracts			✓	✓
Supplier Fax Details			✓	✓
Intrastat Declaration Enhancements			✓	✓
Passive Warehouse Management			✓	✓
Print Spool File Cleardown			✓	✓
Product Hierarchies				✓
Extended Discounts				✓
Client enhancements & utilities				✓

Enhanced client configurability				✓
Extended drill-down functionality				✓
Improved usability				✓
Centralised Data storage				✓
Client invocation control system				✓
XML Interfaces				✓
Product Configurator Enhancements				✓
Project Billing European Enhancements				✓
COP in Quotations and Scheduled Orders				✓
Accounts Receivable Multi-Currency				✓
Serial Number Entry Enhancement				✓
VAT on Order Acknowledgments				✓
Print Control Extensions				✓



active support for business

Sage, Sage House, Wharfedale Road, Winnersh, Wokingham, Berkshire RG41 5RD
Tel: 0845 3000 900 Fax: +44 (0) 118 944 9278 email: salesuk@sage.com web: www.sage.com

Sage Enterprise Solutions Limited trading as Sage.

All other trademarks acknowledged and accepted. All information is subject to change without notice.

Sage Enterprise Solutions Limited cannot be held liable for photographic or typographical errors.

© Copyright 2002 Sage Enterprise Solutions Limited. All rights reserved.

Part no. MK8100-3772