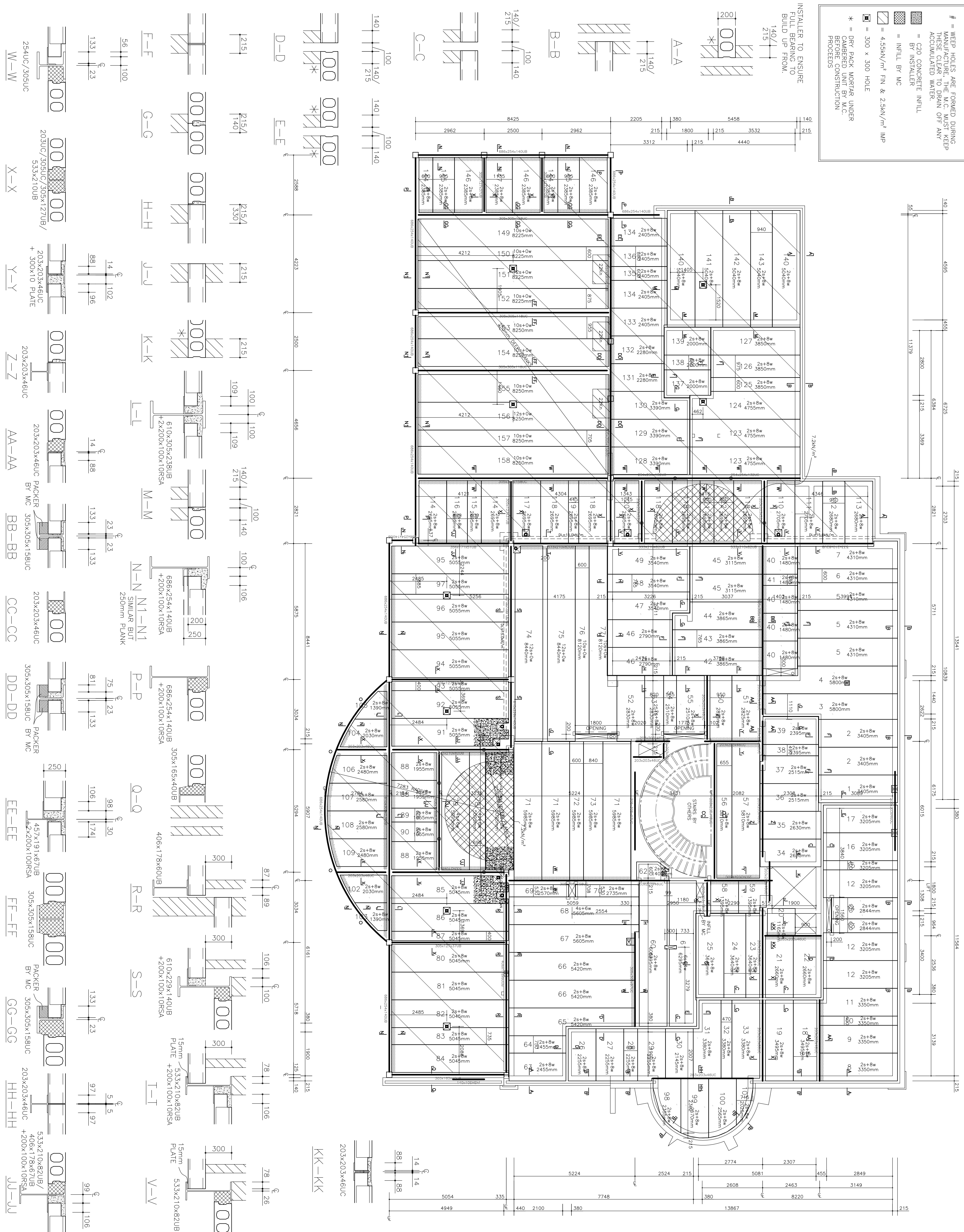


= WEAP HOLES ARE FORMED DURING MANUFACTURE OF M.C. MUST KEEP THESE CLEAR TO DRAIN OFF ANY ACCUMULATED WATER.
 = C20 CONCRETE INFILL BY INSTALLER
 = 4.55kN/m² FIN & 2.5kN/m² IMP
 = 300 x 300 HOLE
 * = DRY PACK MORTAR UNDER COMPARED UNIT BY M.C. BEFORE CONSTRUCTION PROCEEDS



NOTES

- Design Information:
 Loadings:
 Finishes:
 Self weight:
 Partitions:
 Imposed: 1
- The Main Contractor (M.C.) shall ensure that these loadings are not exceeded during construction.
 Concrete (Fcu): 55N/mm²
 Exposure: Moderate
 Fire resistance: One Hours
 Min cover to reinforcement: 30mm
 Ceiling: Suspended
- Dimensions:
 The M.C. shall check and approve all setting out dimensions and return a copy of this drawing signed as approved before manufacture can commence.
 Dimensions checked and approved
 Signed:
 For:
 Date:
- Installation:
 Access and handstanding shall be provided by the M.C. for a Mobile crane and transport as stated in the Milbank quotation.
 The M.C. shall remove and/or remove and reinstates any overhead obstructions that may hinder the installation of the flooring units.
 All bearing surfaces must be constructed to the correct levels, 50mm above the level of the time of installing the flooring units.
- Grouting & Finishes
 The layout of the floor shown on the drawing allows for normal tolerances. Installers should make up joints in order to complete the floor area. (See note 5).
 Joints between units must be grouted up with concrete or sand cement mortar to within 50mm from the bottom of the unit. The bottom of the mortar shall be level with the top of the joint from the top. Any infilling within the bottom 50mm of the joint or debbing out on the soffit of the slab shall be by the M.C.
- In situ infill
 The M.C. shall provide spluttering and in situ concrete infill within the floor depth for make up strips as necessary and infill adjacent to steel beams, notches and columns, service holes and other penetrations.
- Holes up to 100mm diameter may be drilled through the cores of the units by the M.C.
 For larger holes the M.C. must obtain approval from Milbank.

FLOOR THICKNESS 200 mm

MILBANK
 Earls Court Business Park, Earls Court,
 Colchester, Essex, CO3 2NS
 Tel: 01787 223931
 Email: design@milbank.co.uk
 Email: estimate@milbank.co.uk
 Delivery Fax: 01787 220528
 Design Fax: 01787 220528
 Estimating Fax: 01787 220528

OCTAGON DEVELOPMENTS LTD
 Prof. Csk
 DRAIN BC
 SCALE: A1=1:75 DATE: 21.11.13
 SHEET No. W116071 Dwg. No. 03 Rev. B

NO.	DATE	REVISION	BY
B	18.12.13	SCHEDULED	RC
A	11.12.13	REVISED TO SUIT COMMENTS	RC
1	11.12.13	ISSUED FOR TENDERS	RC

CONTRACT: 35551
 CONTRACTOR: OVERBYE
 PROJECT: SOUTH ROAD
 LOCATION: ST GEORGES HILL
 WEYBRIDGE

TITLE: PS HOLLOWCORE PLANKS
 TERRACE & GROUND FLOOR LAYOUT
 PS-200