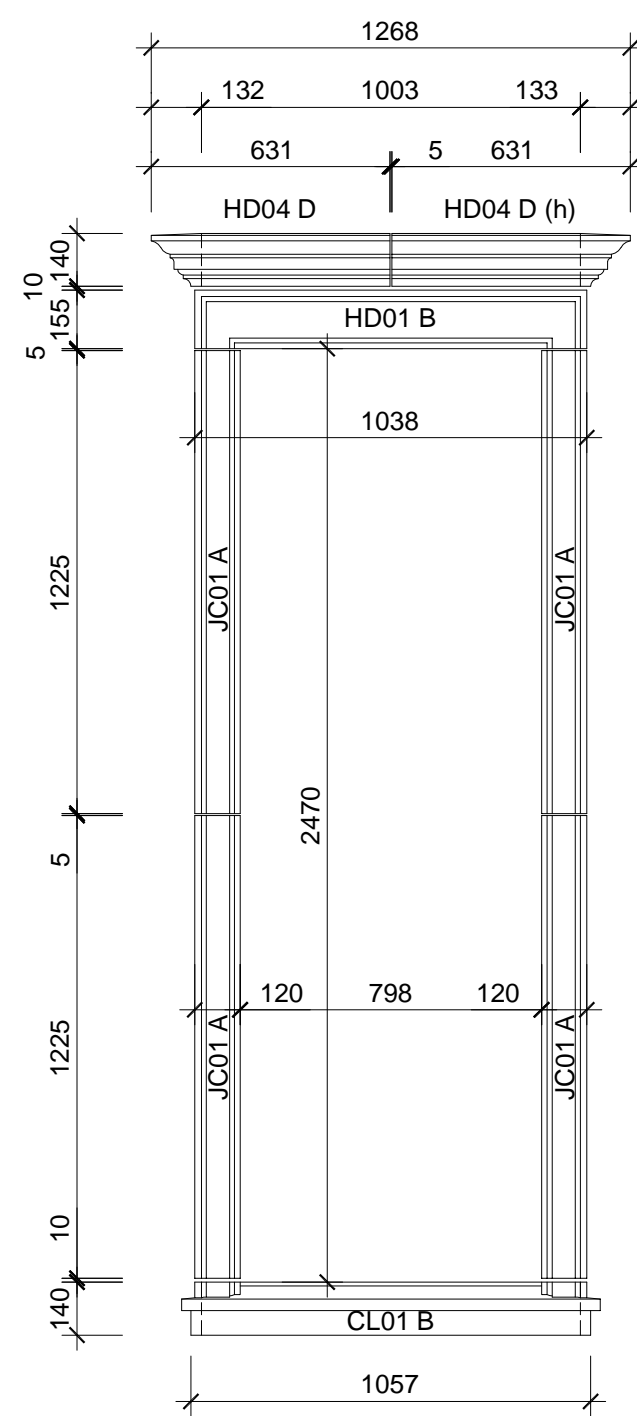
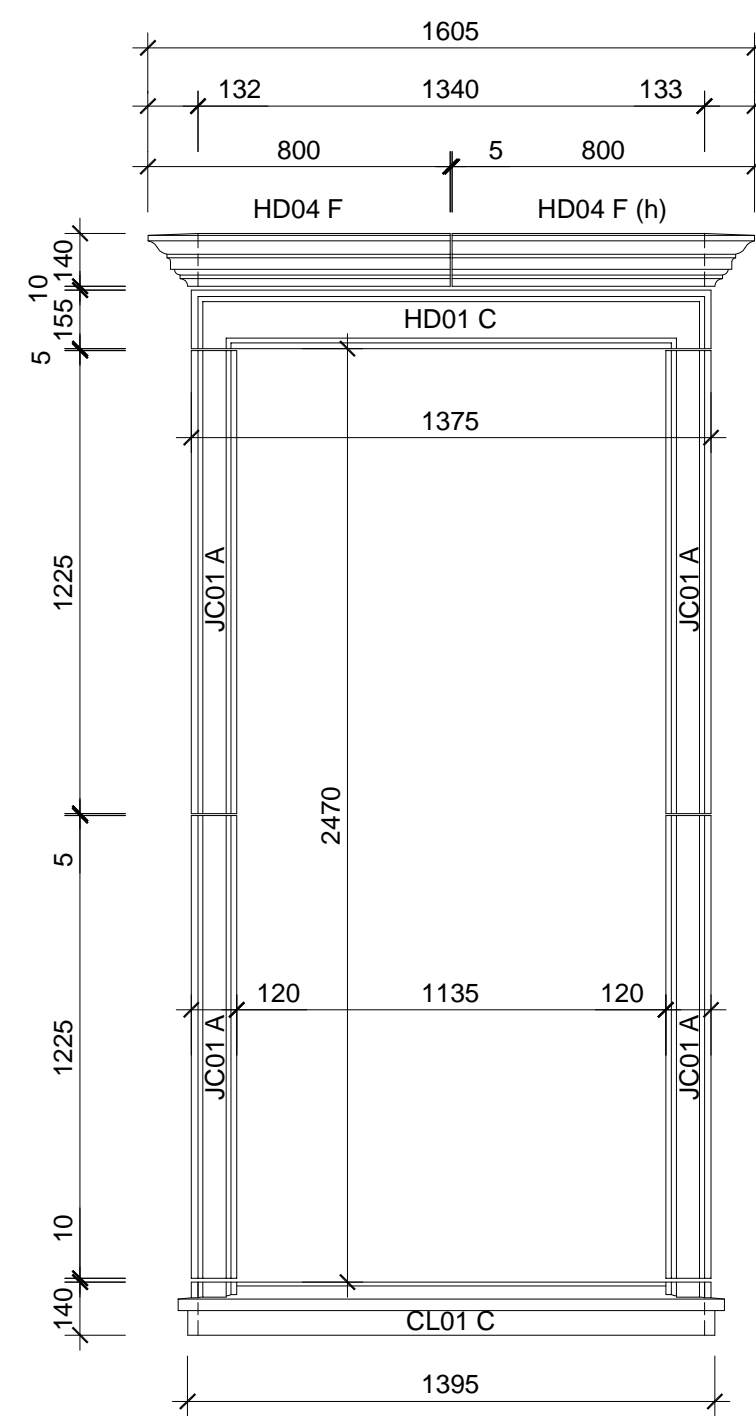


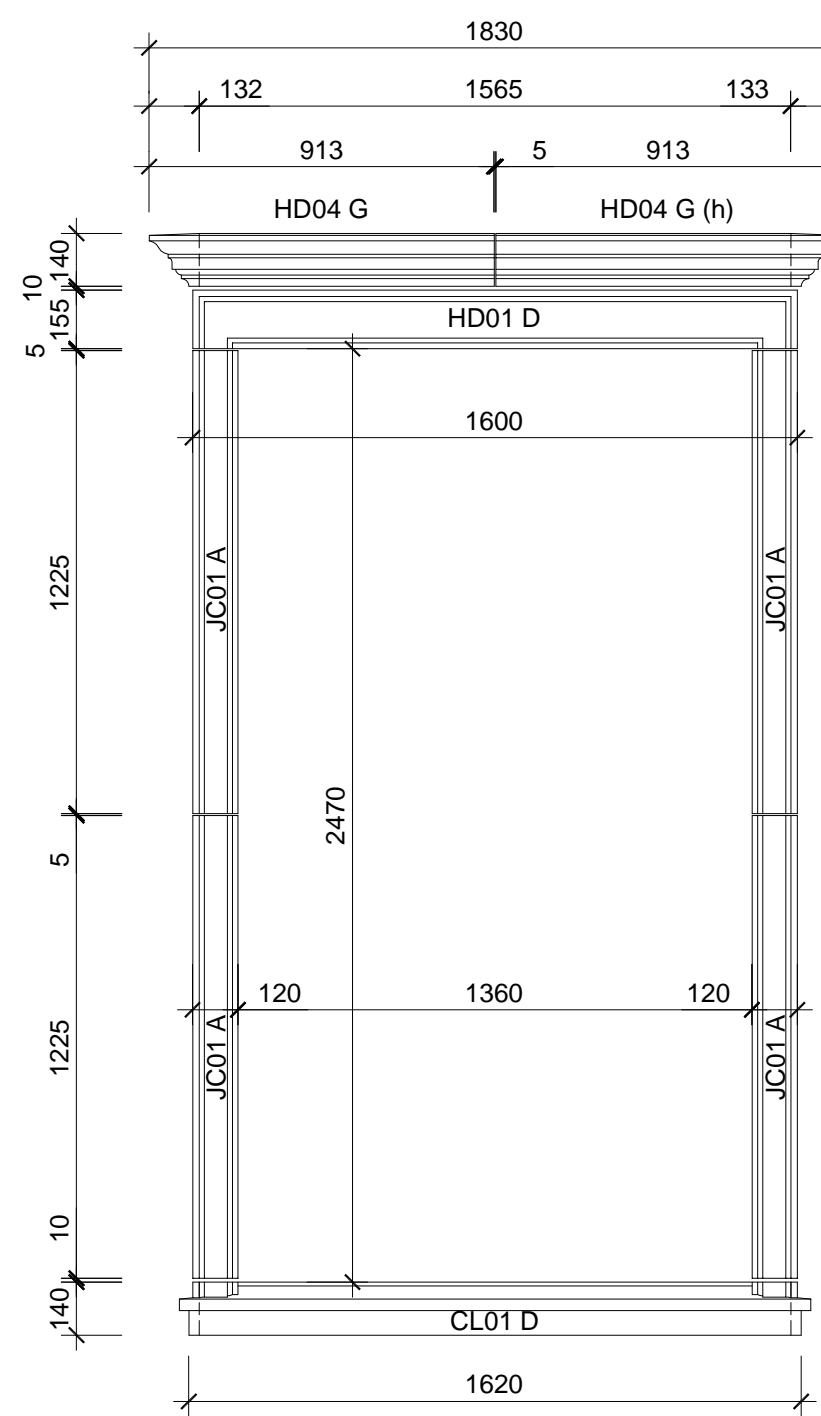
**Surround A**  
16 No. Required  
WF01, WF03, WF04, WF05, WF07, WF08, WF09, WF11, WF12, WF13, WF17, WF18, WF26, WF27, WF31, WF32.



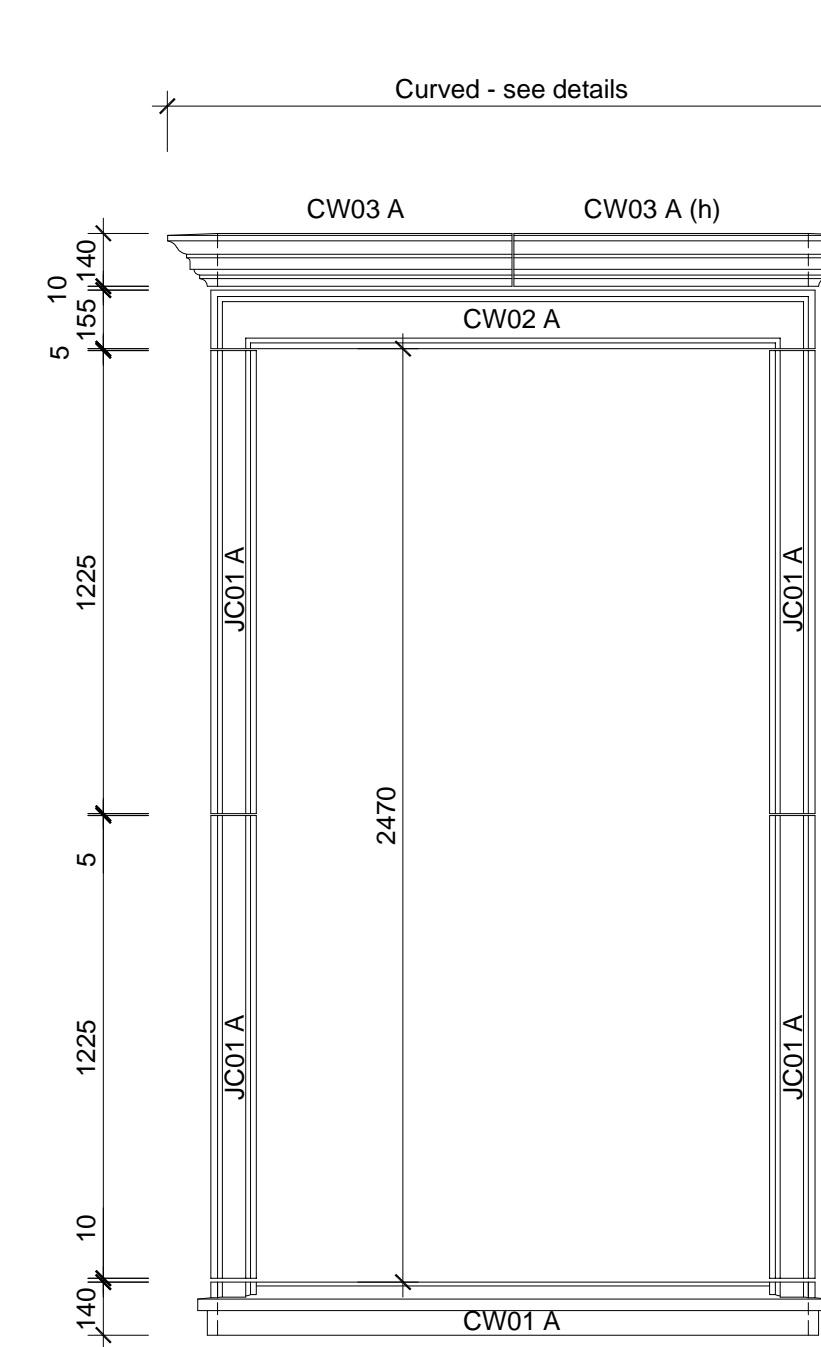
**Surround B**  
6 No. Required  
WG01, WG03, WG04, WG08, WG09, WG11



**Surround C**  
18 No. Required  
WG02, WG10, WG12, WG13, WG15, WG16, WG20, WG21, WG23, WG24, WF02, WF10, WF19, WF20, WF21, WF23, WF24, WF25.



**Surround D**  
1 No. Required  
WF06.

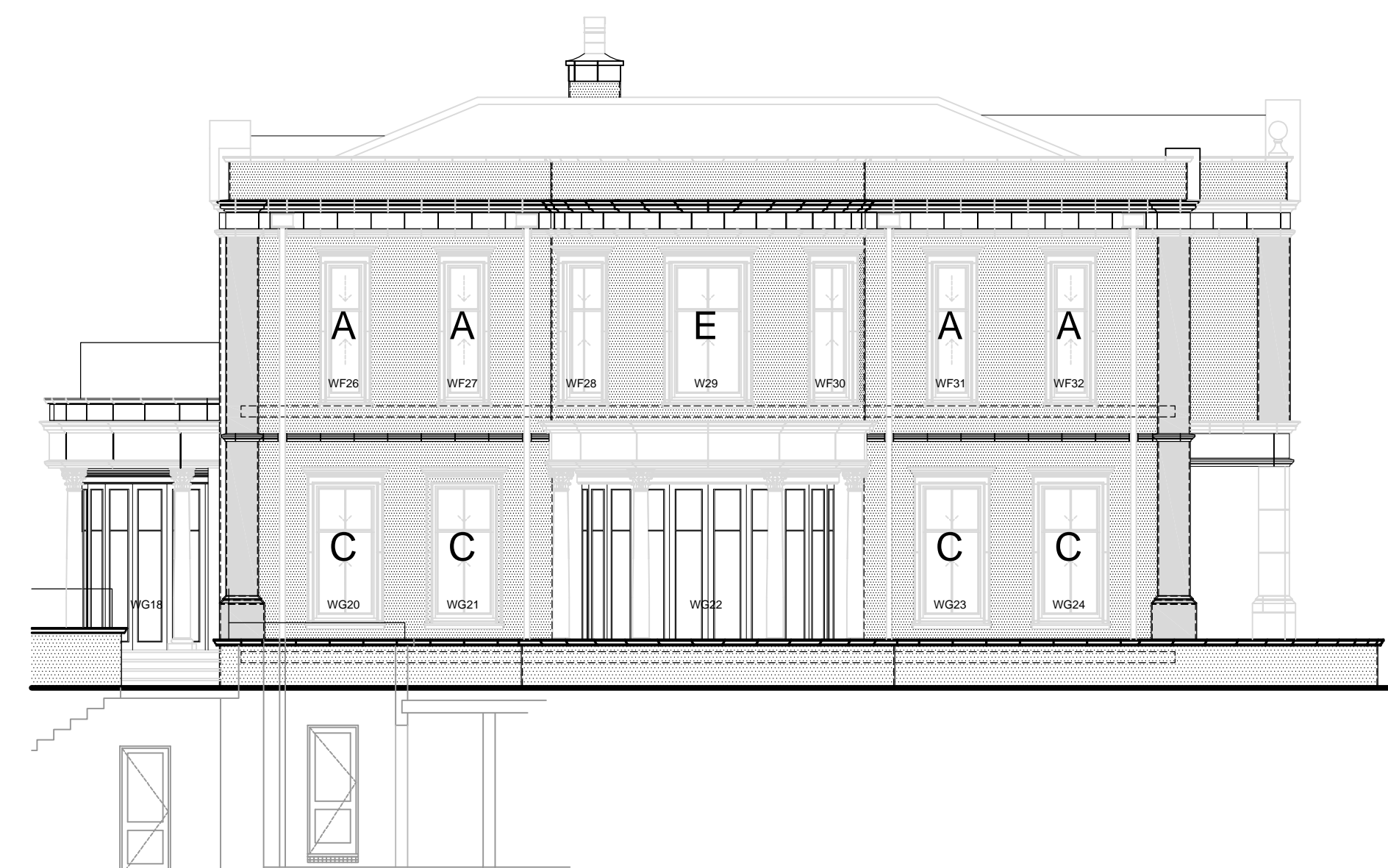
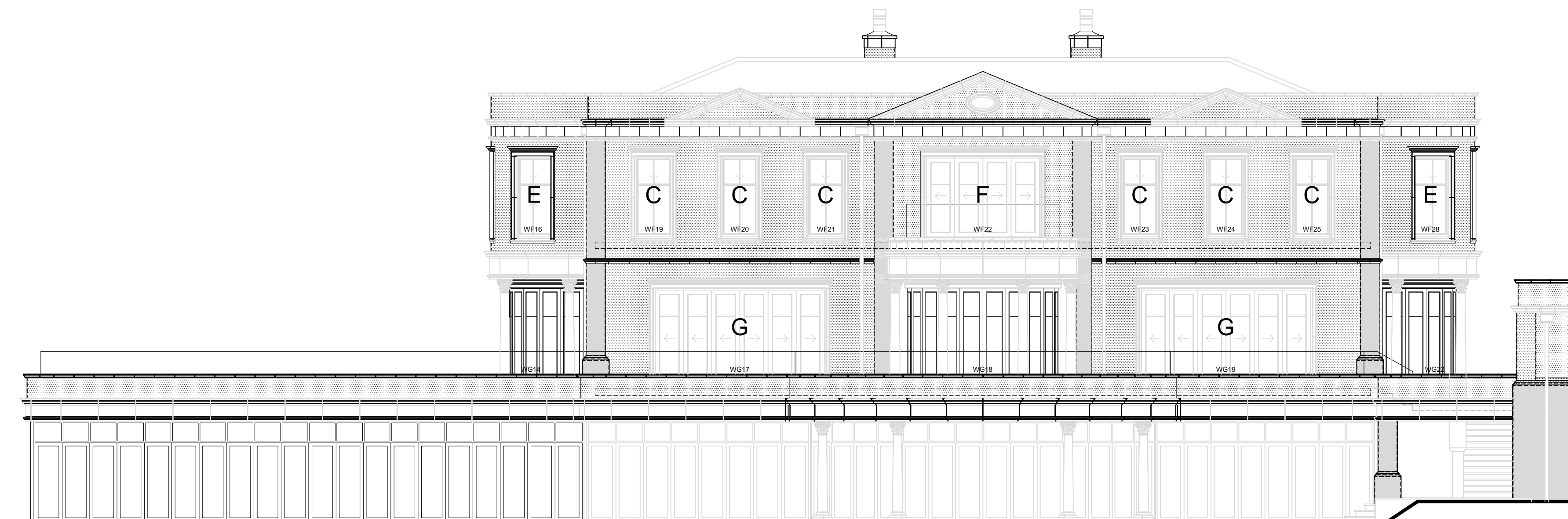
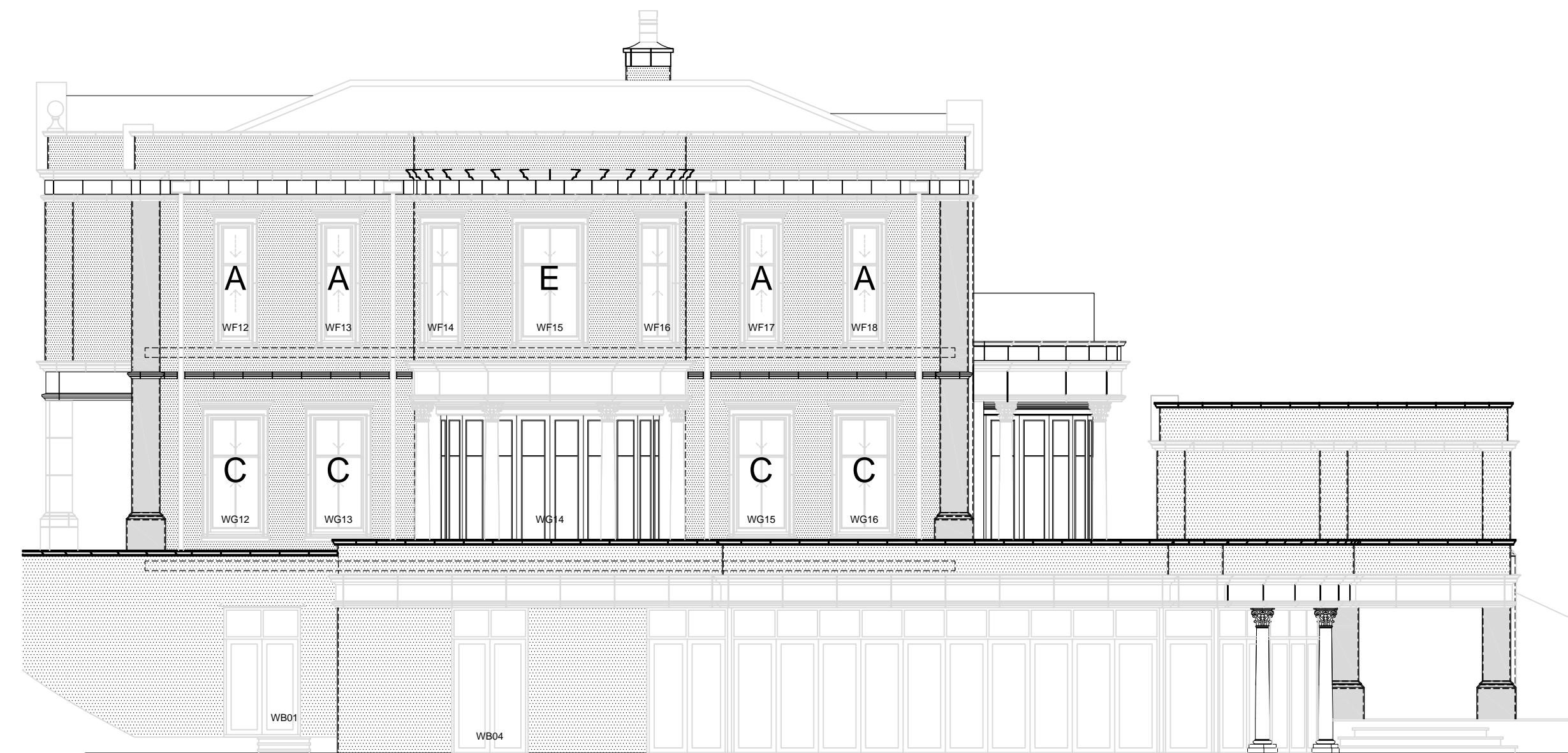
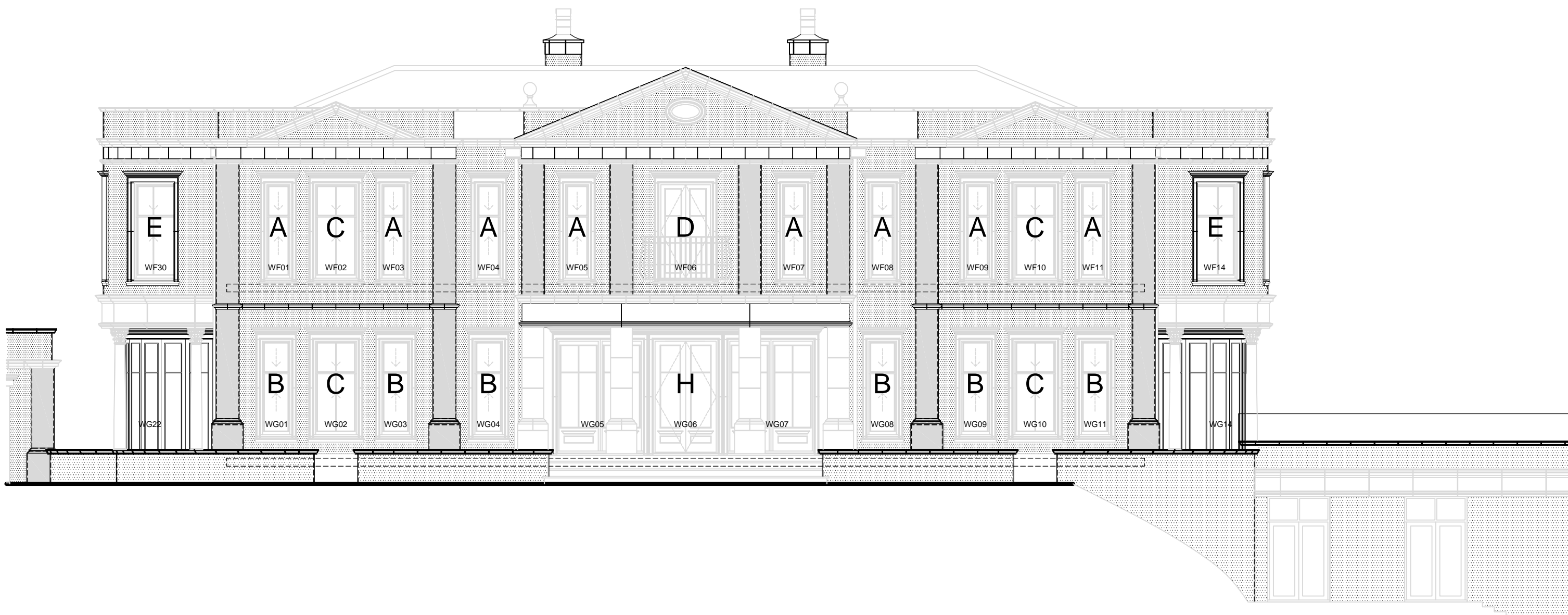


**Surround E**  
7 No. Required  
WF06, WF14, WF15, WF16, WF28, WF29, WF30.

**Notes**

1. All quantities shown are actual quantities required for each plot. Any excess (for breakage etc.) should be allowed for by the surveyor.
2. All stone components are to be smooth PORTLAND STONE finish.
3. All components over 25kg are to have recessed lifting eye sockets cast in.
4. Any reinforcement deemed necessary by the supplier for safe handling and transportation is to be included.
5. Details indicated allow for manufacturing in wet cast acid etched concrete. Details and unit sizes will vary if dry cast is selected.
6. Minimum reinforcement for structural members is noted on these drawings. Supplier to provide all other necessary reinforcement in accordance with normal standard / good practice.
7. Reinforcement must be provided with 40mm concrete cover. Where ever this cannot be achieved the supplier will be required to use stainless steel reinforcement.
8. Supplier will be required to determine both quantities and provide bar bending schedules for reinforcement as necessary - all for suppliers own use.
9. Lapped joints in reinforcement bars for stonework concrete will **not** be permitted.
10. Concrete strength for all structural stonework and cavity walls to be 35N/mm<sup>2</sup> at 28 days with 10mm max. aggregate size.
11. Supplier to incorporate and supply all necessary fixings in accordance with normal standard / good practice, for all stonework / concrete members. (e.g. dowels, straps, ties, support brackets etc.)

Stone manufacturer to design & detail all units & provide all necessary structural reinforcement to loadbearing stone units.



Revision	Date
A Construction Issue.	12.07.13



Octagon Developments Limited  
Weir House Hurst Road  
East Molesey Surrey KT8 9AQ  
T: +44 (0) 208 481 7500  
F: +44 (0) 208 481 7501  
E: Octagon@Octdev.co.uk  
W: www.Octdev.co.uk

Project  
**Overbye, St Georges Hill**

Title  
**Stone Details  
Window/Door Surrounds**

Status	Construction
Scale	1:100
Job number	0623
Drawn	sh
Drawing number	6000
Date	Jun. '13
Revision	A