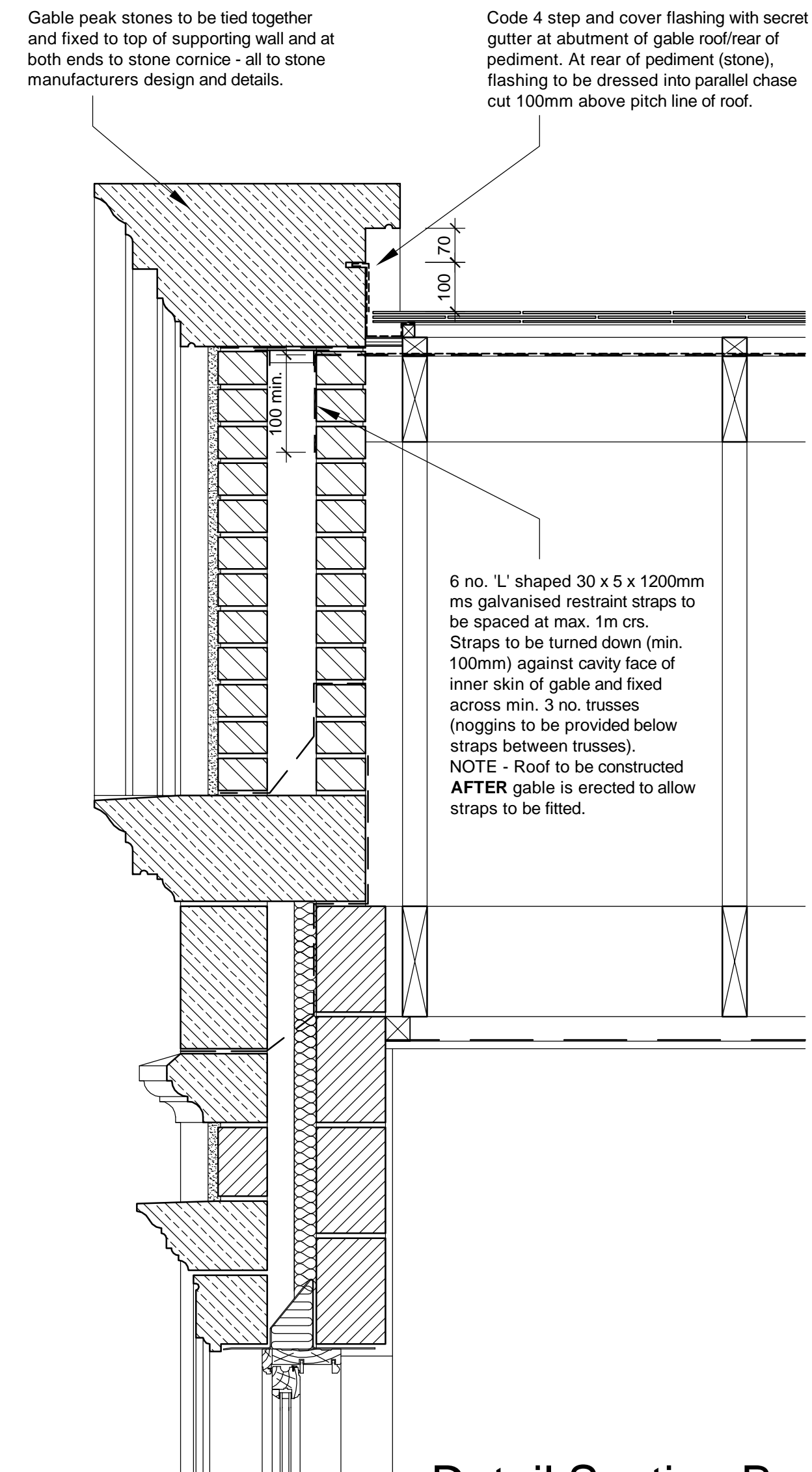
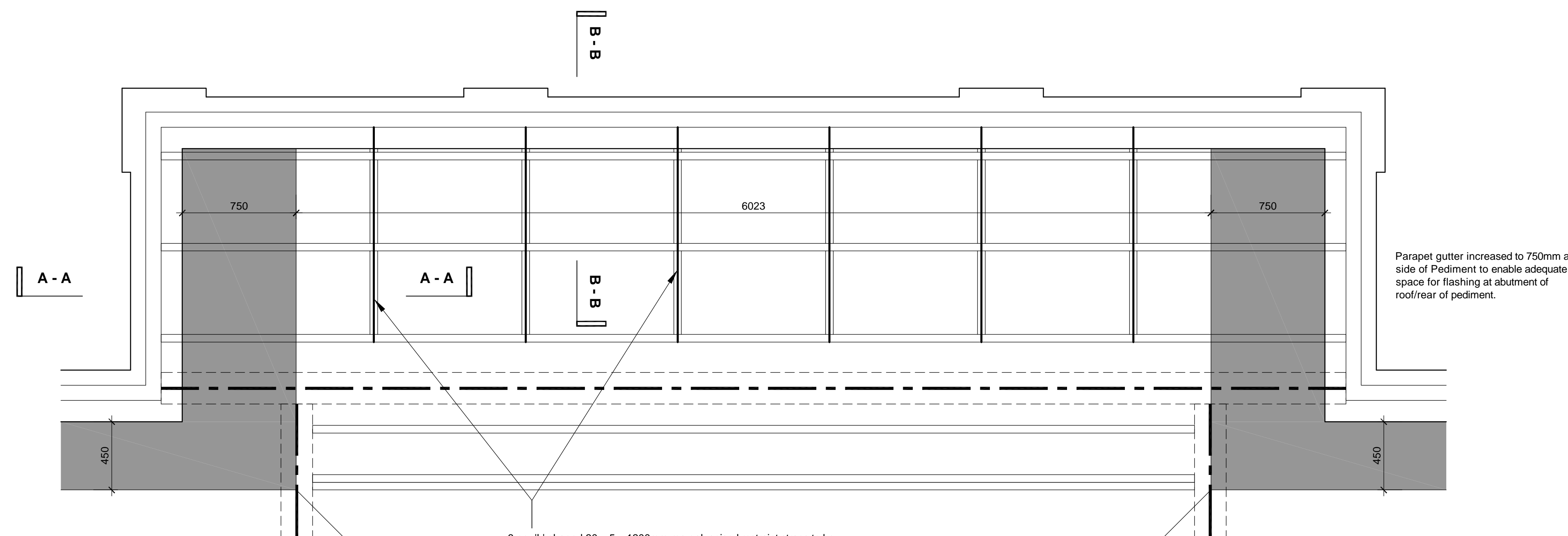


Detail Section A - A  
Rear of Pediment Gable / Parapet Gutter  
Scale 1:10



Detail Section B - B  
Rear of Gable / Parapet Gutter  
Scale 1:10

**NOTE:-**  
Front pediment/gable formed in trusses - as illustrated opposite.  
Rear pediment/gable formed in cut timbers laid over main roof trusses. Infill roof to be set out to enable flashing/secret gutter as detailed opposite for front pediment/gable.



Roof Plan  
Front Pediment Gable / Parapet Gutter  
Scale 1:20

6 no. 'L' shaped 30 x 5 x 1200mm ms galvanised restraint straps to be spaced at max. 1m crs. Straps to be turned down (min. 100mm) against cavity face of inner skin of gable and fixed across min. 3 no. trusses (noggin to be provided below straps between trusses).  
NOTE - Roof to be constructed AFTER gable is erected to allow straps to be fitted.

A	Construction Issue.	11.02.14
Revision		Date

**OCTAGON**

Octagon Developments Limited  
Weir House Hurst Road  
East Molesey Surrey KT8 9AQ  
T: +44 (0) 208 481 7500  
F: +44 (0) 208 481 7501  
E: Octagon@Octdev.co.uk  
W: www.Octdev.co.uk

Project  
**Oberbye, St George's Hill**  
Title  
**Construction Details**  
**Front Pediment/Gable Details**

Status	Construction	Drawn	Date
Scale	1:10, 1:20	sh	Feb. '14
Job number	0623	Drawing number	5015
			Revision
			A

© Copyright Octagon Developments Limited