

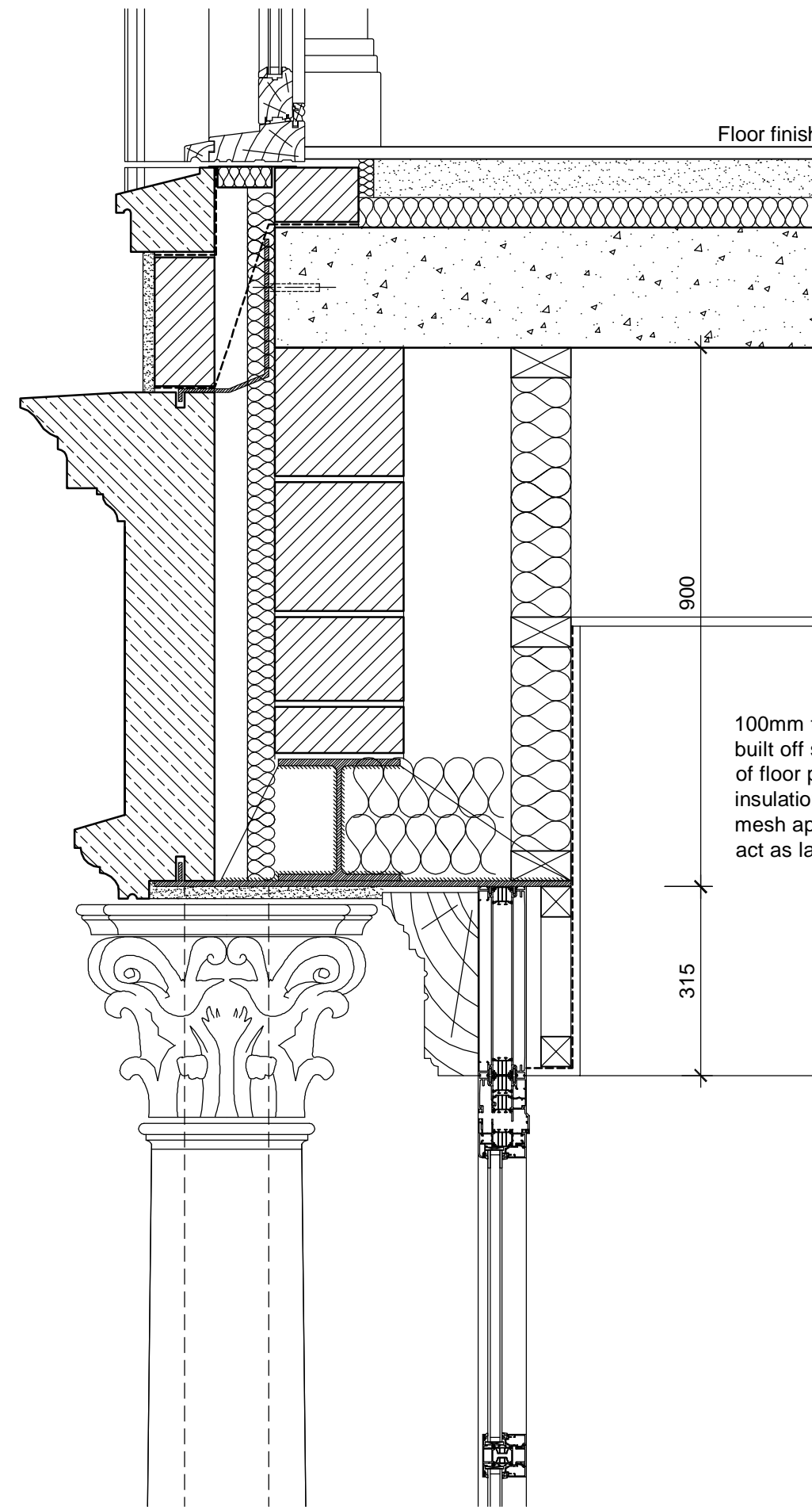
This drawing is to be read in conjunction with relevant General Arrangement Plan, Elevation & Section drawings.

Refer to Construction Specification Notes for full detailed technical specification.

2 no. galvanised 25mm wide x 6mm thick straps per stone section. Thick mastic paste to be applied to vertical leg of strap set in stone. Straps fixed to end of planks with 8mm resin anchors, located at centre of concrete infilled cores with DPC cavity tray over.

Underside of steel plate to be rendered between columns (stainless steel mesh to be site welded to provide key).

White painted timber curved head profile to match stone.



**D-27**  
Curved Bay Head Detail

Code 4 lead cover flashing to mastic asphalt upstand dressed over stone coping as indicated.

125mm high x 425mm wide Stone Parapet Coping - see separate details.

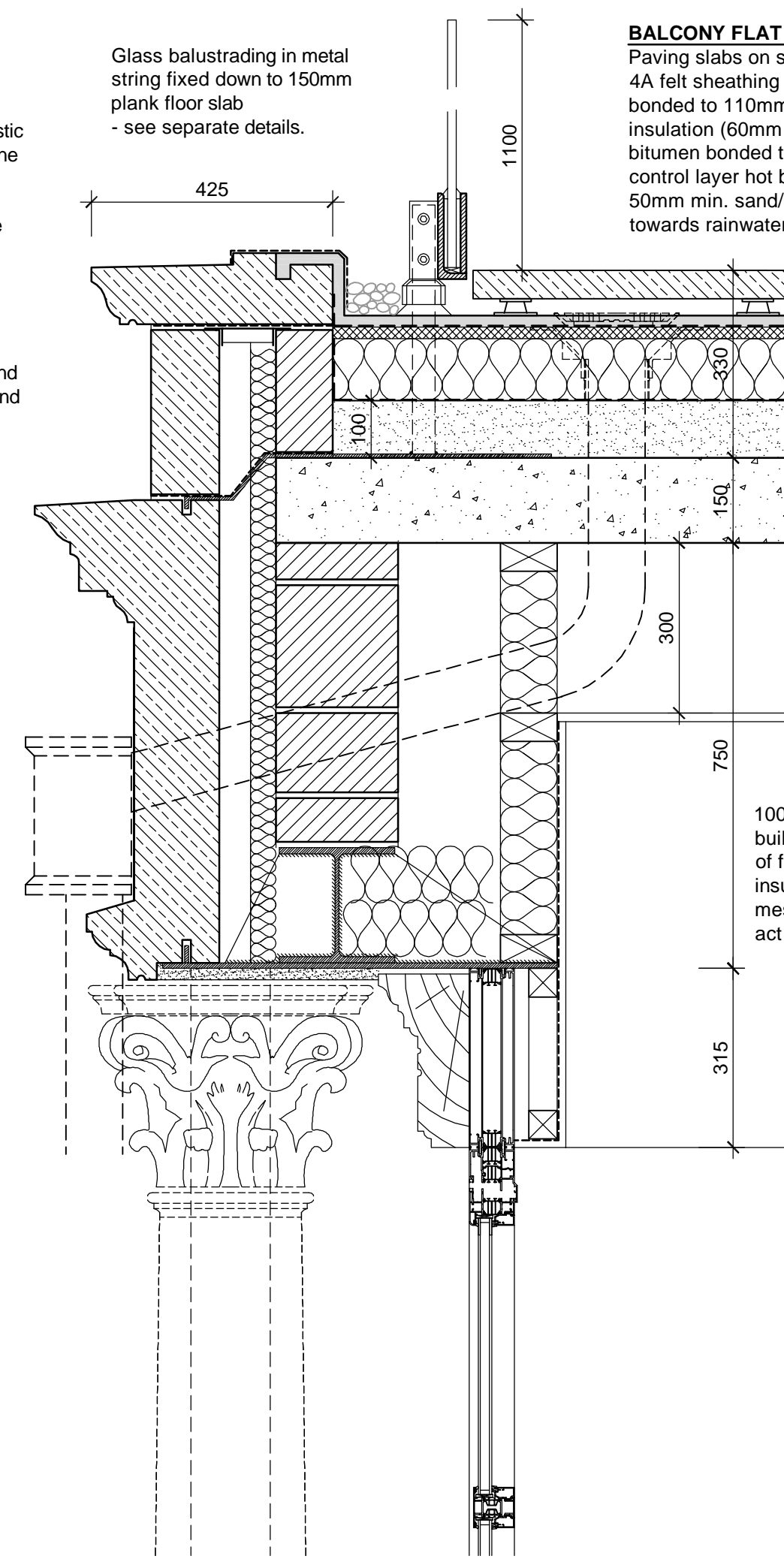
Cavity Trays Ltd "Type J" dpc support and closer unit installed under coping, bedded in mortar and butt jointed to provide a uniform and even finish. dpc laid over Type J closer.

845mm high Stone Band  
2 no. galvanised 25mm wide x 6mm thick straps per stone section. Thick mastic paste to be applied to vertical leg of strap set in stone. Straps fixed to top of planks with Tapcon screws with DPC cavity tray over.

2 no. rainwater outlets (at side locations) with internal pipe. Hopper located at sides of bay with internal pipe exiting through stone band.

Underside of steel plate to be rendered between columns (stainless steel mesh to be site welded to provide key).

White painted timber curved head profile to match stone.



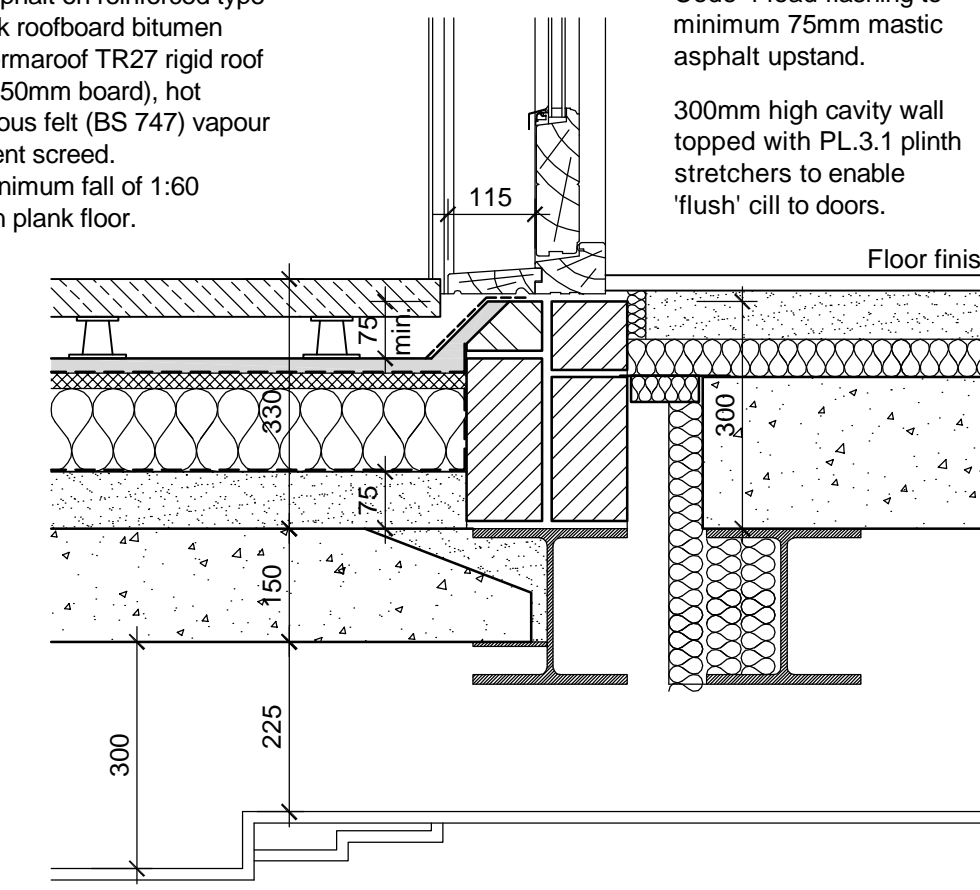
**D-28**  
Curved Bay Balcony Parapet / Head Detail

**BALCONY FLAT ROOF:-**

Paving slabs on supports on two coat mastic asphalt on reinforced type 4A felt sheathing layer to BS 747, on 20mm cork roofboard bitumen bonded to 110mm total thickness Kingspan Thermaroof TR27 rigid roof insulation (60mm board laid break bonded over 50mm board), hot bitumen bonded to a previously applied bituminous felt (BS 747) vapour control layer hot bitumen bonded to sand / cement screed. 50mm min. sand/cement screed to provide a minimum fall of 1:60 towards rainwater outlets on concrete wide span plank floor.

Code 4 lead flashing to minimum 75mm mastic asphalt upstand.

300mm high cavity wall topped with PL.3.1 plinth stretchers to enable 'flush' cill to doors.



**D-29**  
Balcony Threshold / Cill Detail

100mm high x 495mm wide Stone Coping - see separate details.

Cavity Trays Ltd "Type J" dpc support and closer unit installed under coping, bedded in mortar and butt jointed to provide a uniform and even finish. dpc laid over Type J closer.

Continuous dpc cavity tray positioned over stone cornice, dressed up cavity and lapped by lead flashing to terrace.

695mm high Band Course - see separate details.

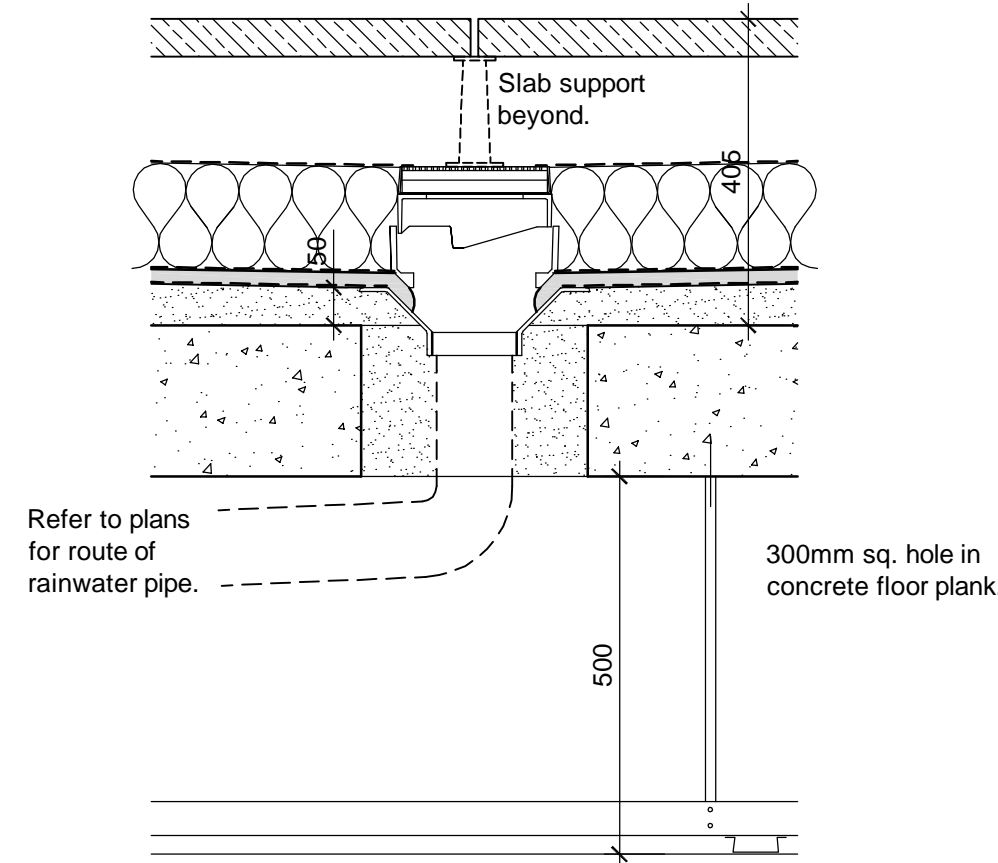
27mm thick Gyproc Thermaline Plus plasterboard to be fixed to u/s of steel plate with Tek Screws.

**D-30**  
Terrace Parapet / Head Detail

**INVERTED FLAT ROOF TERRACE:-**

Paving slabs OR timber decking on supports, on a high performance non-woven polyethylene membrane (Yelotex or similar) laid over 140mm Cellecta Yelofloam X3L insulation boards. Boards loose-laid on non-woven polyester fleece isolating membrane over two coat mastic asphalt on reinforced type 4A felt sheathing layer to BS 747 on sand / cement screed. 50mm min. sand/cement screed to provide a minimum fall of 1:60 towards rainwater outlets on concrete deck.

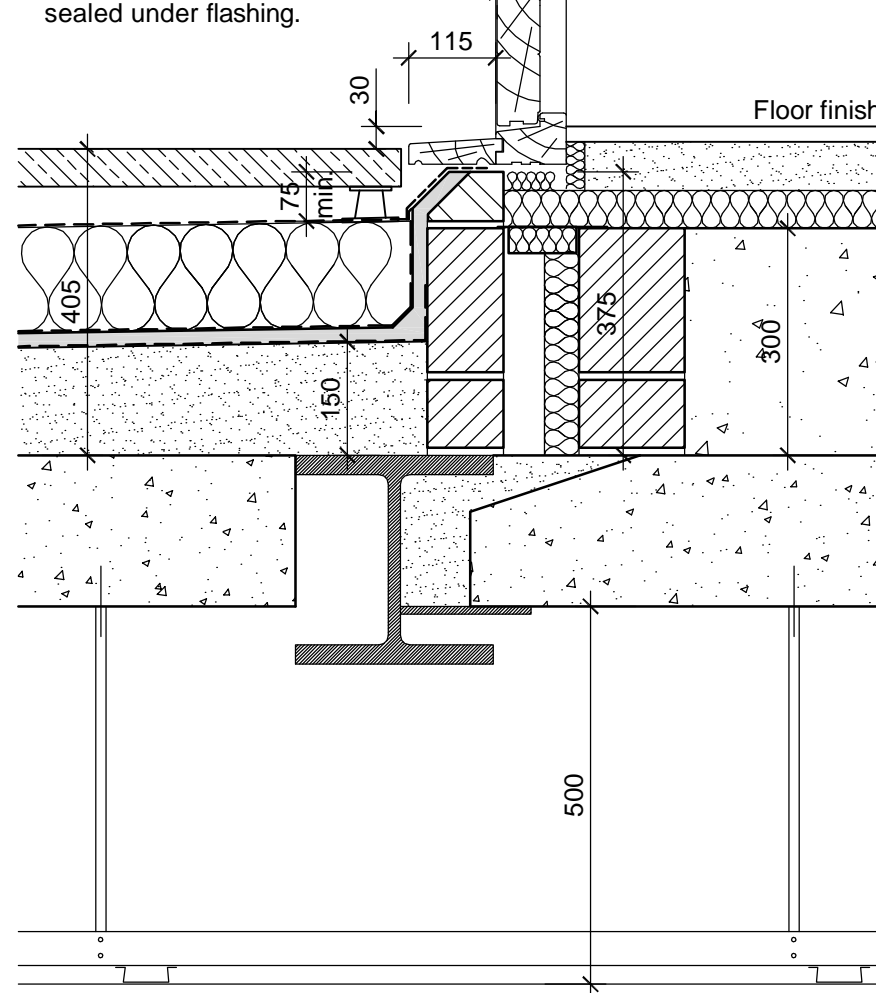
'Wade' threaded outlet type 'WD724' or similar approved



**D-31**  
Terrace Rainwater Outlet Detail

Code 4 lead flashing to minimum 75mm mastic asphalt upstand. Non-woven membrane over insulation to be turned up and sealed under flashing.

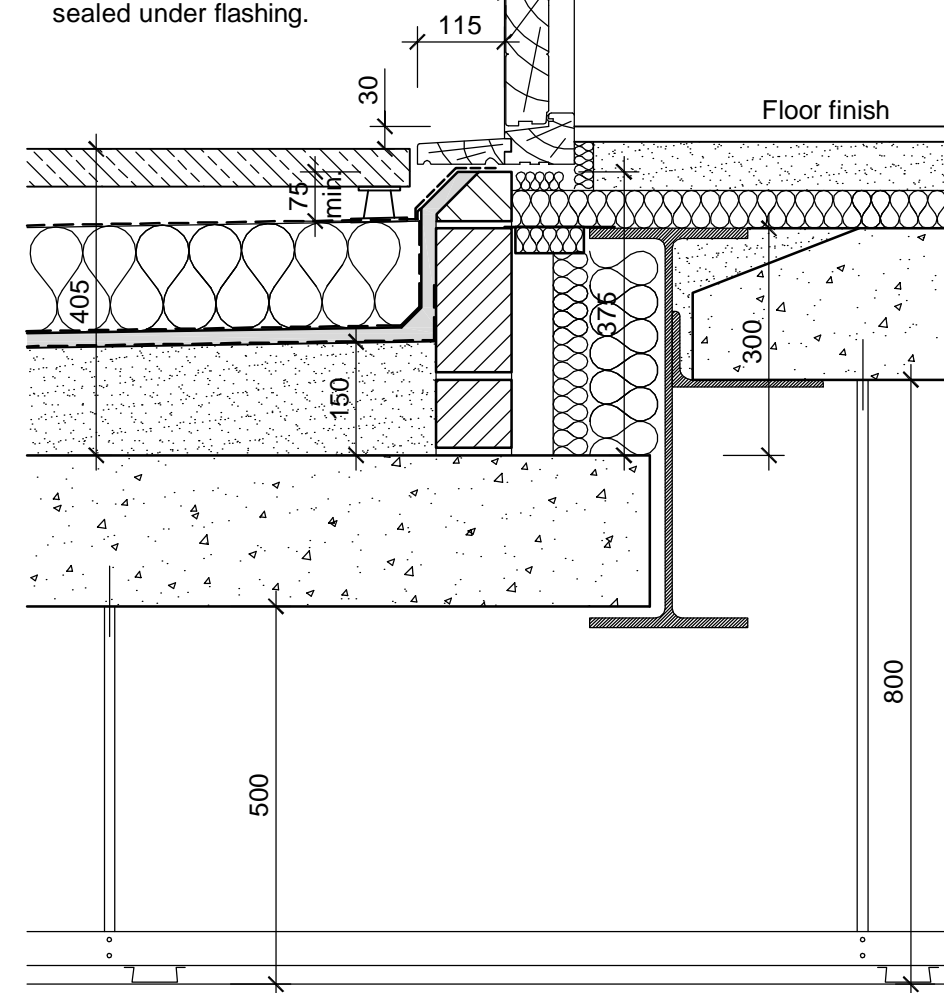
375mm high cavity wall topped with PL.3.1 plinth stretchers to enable 'flush' cill to doors.



**D-32**  
Terrace / Curved Bay Threshold / Cill Detail

Code 4 lead flashing to minimum 75mm mastic asphalt upstand. Non-woven membrane over insulation to be turned up and sealed under flashing.

375mm high cavity wall topped with PL.3.1 plinth stretchers to enable 'flush' cill to doors.



**D-33**  
Terrace Threshold / Cill Detail

A	Construction Issue.	04.11.13
	Revision	Date



Octagon Developments Limited  
Weir House Hurst Road  
East Molesey Surrey KT8 9AQ  
T: +44 (0) 208 481 7500  
F: +44 (0) 208 481 7501  
E: Octagon@Octdev.co.uk  
W: www.Octdev.co.uk

Project  
**Overbye, St Georges Hill**

Title  
**Construction Details**

**Sheet 4**

Status	Construction	Scale	1:10	Drawn	sh	Date	Oct. '13
Job number	<b>0623</b>	Drawing number	<b>5003</b>	Revision	<b>A</b>		