

This drawing is to be read in conjunction with relevant General Arrangement Plan, Elevation & Section drawings.

Refer to Construction Specification Notes for full detailed technical specification.

Note: - Where a movement joint occurs in a parapet wall, **BOTH** skins are to have a joint.
Joints indicated on plans/elevation drawings.

100mm high x 495mm wide Stone Coping - see separate details.

Cavity Trays Ltd "Type J" dpc support and closer unit installed under coping, bedded in mortar and butt jointed to provide a uniform and even finish. dpc laid over Type J closer.

Continuous dpc cavity tray positioned over stone cornice.

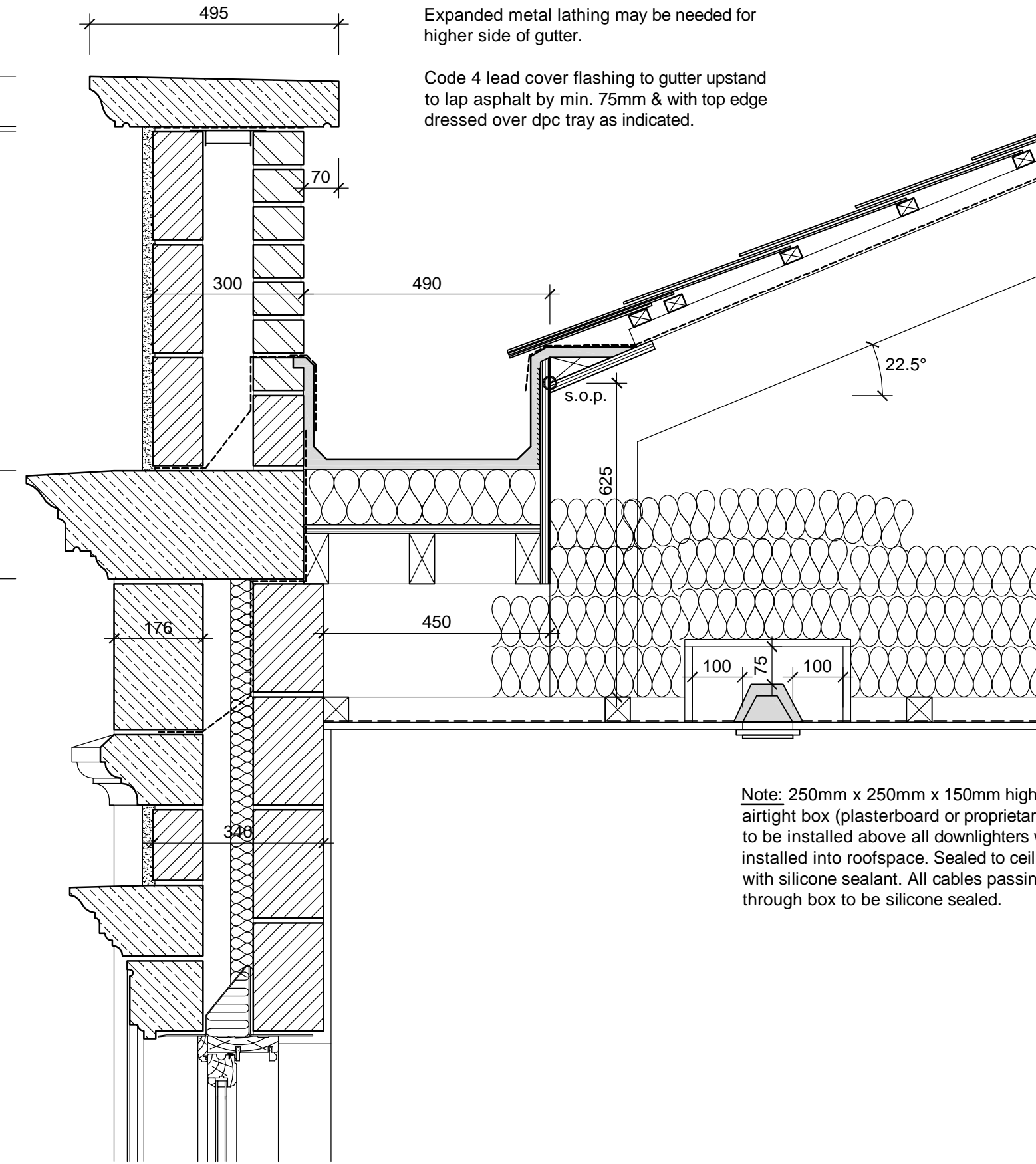
215mm high Stone Cornice - see separate details.

Band course widened over Front Elevation bays - see stone drawing for location.

Corbelled stone band to be temporarily propped until stone cornice is in place.

Continuous dpc cavity tray to be taken up cavity and behind cornice stone as indicated.

D-21 Roof Parapet / Back Gutter Detail



PARAPET GUTTER: -
Mastic asphalt on separating layer dressed over fillet and lapped by Code 4 lead upstand cover flashing, lower edge of roofing felt to lap lead flashing without being exposed to direct sunlight.

Gutter formed with two coat mastic asphalt on reinforced type 4A felt sheathing layer to BS 747, on 110mm insulation (built up as main flat roof) on 18mm exterior quality plywood deck on sw firrings to provide a min. fall of 1:60 towards rainwater outlets. Expanded metal lathing may be needed for higher side of gutter.

Code 4 lead cover flashing to gutter upstand to lap asphalt by min. 75mm & with top edge dressed over dpc tray as indicated.

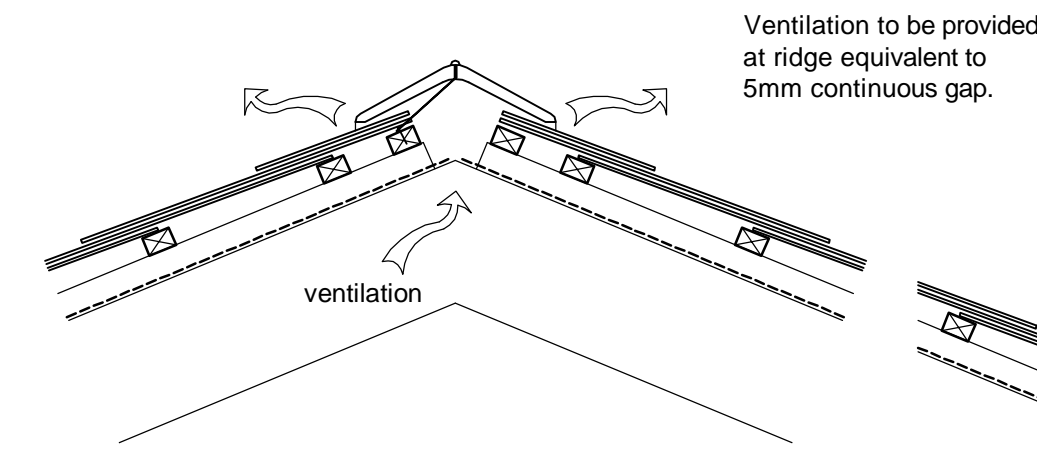
PITCHED ROOF CONSTRUCTION: -
Natural Slate tiles fixed to 38 x 25mm sw battens laid at required gauge fixed to 50 x 38mm sw counter battens, on 1 No. layer of Tyvec Supro breathable sarking felt laid over roof trusses at 22½° pitch to specialist manufacturers design & details.
300mm Rockwool Roll mineral fibre insulation (or similar approved) at ceiling joist level, with one 100mm insulation layer between ceiling joists & 2 layers of 100mm insulation cross layered over ceiling joists.
Underside of trusses lined with Tyvek SD2 air leakage barrier & with 1 layer 12.5mm plasterboard and skim coat finish.

300mm Rockwool Roll mineral fibre insulation (or similar approved) at ceiling joist level, with one 100mm insulation layer between ceiling joists & 2 layers of 100mm insulation cross layered over ceiling joists.
Underside of trusses lined with Tyvek SD2 air leakage barrier & with 1 layer 12.5mm plasterboard and skim coat finish.

Note: 250mm x 250mm x 150mm high airtight box (plasterboard or proprietary unit) to be installed above all downlights where installed into roofspace. Sealed to ceiling with silicone sealant. All cables passing through box to be silicone sealed.

For roof truss setting-out refer to truss section detail on Roof Layout drawing

D-22 Roof Ridge Detail



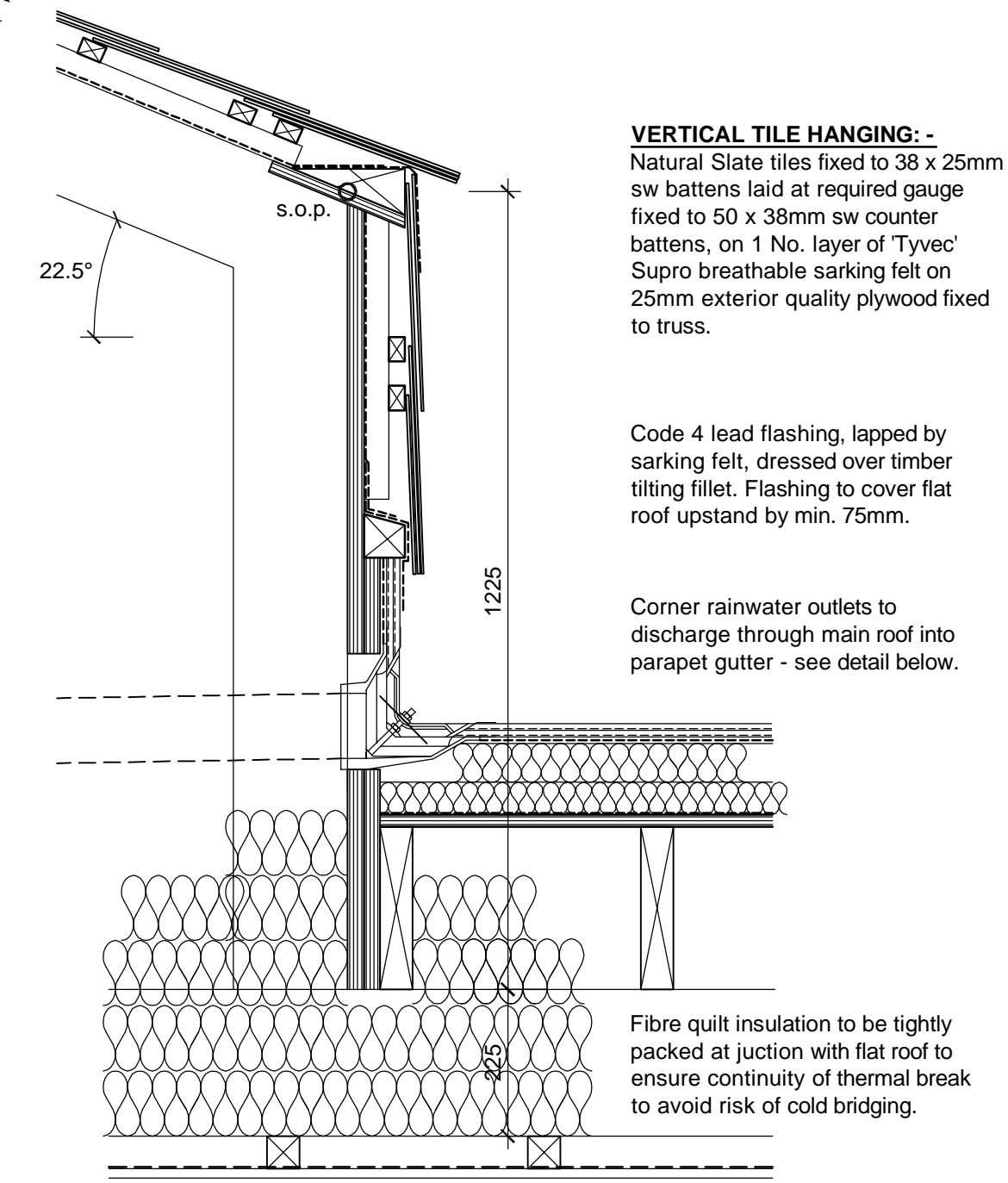
Ventilation to be provided at ridge equivalent to 5mm continuous gap.

FLAT ROOF CONSTRUCTION: -
Warm deck construction consisting of 2 layer Andersons built-up roofing felt system utilising a type 3G perforated base layer on 110mm total thickness Kingspan Thermafloor TR27 rigid urethane roof insulation (60mm board laid break bonded over 50mm board) hot bitumen bonded to a previously applied bituminous felt (BS 747) vapour control layer over 18mm exterior quality plywood deck. Softwood firrings to provide a minimum fall of 1:60 and laid on flat roof joist/attic trusses at 400 crs. (See plans for sizes).
OR
Two coat mastic asphalt on reinforced type 4A felt sheathing layer to BS 747 on 110mm total thickness Kingspan Thermafloor TR27 rigid urethane roof insulation (60mm board laid break bonded over 50mm board) hot bitumen bonded to a previously applied bituminous felt (BS 747) vapour control layer over 18mm exterior quality plywood deck. Softwood firrings to provide a minimum fall of 1:60 and laid on flat roof joist/attic trusses at 400 crs. (See plans for sizes).

All roof timbers are to be double vacuum treated with preservative.

Underside of rafters to be lined with Tyvek SD2 air leakage barrier and finished with 12.5mm plasterboard lining, scrimmed and set.

D-23 Roof Flat Roof / Tile Hanging Detail



VERTICAL TILE HANGING: -
Natural Slate tiles fixed to 38 x 25mm sw battens laid at required gauge fixed to 50 x 38mm sw counter battens, on 1 No. layer of Tyvec Supro breathable sarking felt on 25mm exterior quality plywood fixed to truss.

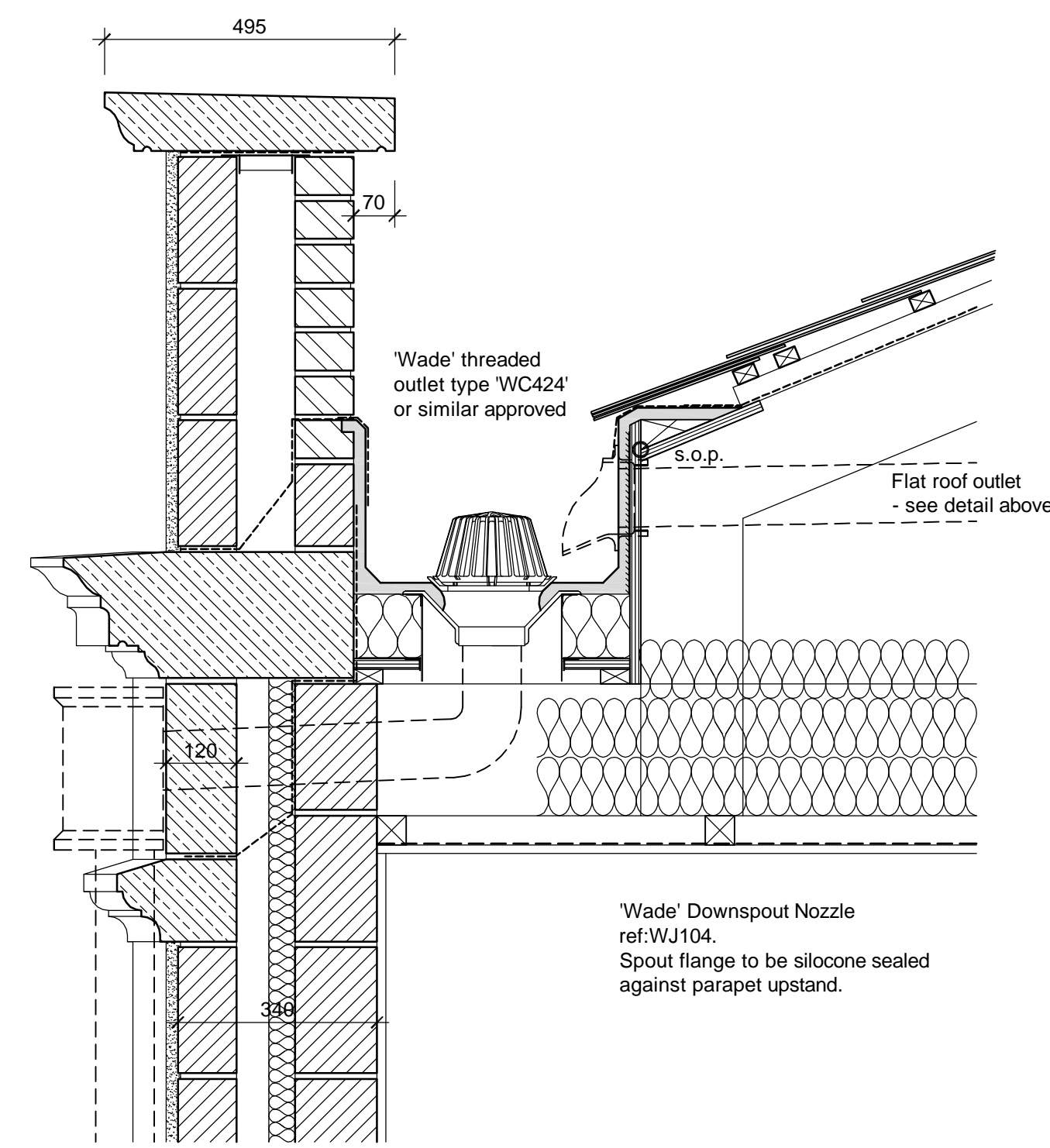
Code 4 lead flashing, lapped by sarking felt, dressed over timber tilting fillet. Flashing to cover flat roof upstand by min. 75mm.

Corner rainwater outlets to discharge through main roof into parapet gutter - see detail below.

Fibre quilt insulation to be tightly packed at junction with flat roof to ensure continuity of thermal break to avoid risk of cold bridging.

nwp core drilled through parapet wall
'Wade' Downspout Nozzle ref:WJ104. Spout flange to be silicone sealed against wall/back of hopper
Rainwater hopper cut on site tight against nwp projecting through parapet.

D-24 Roof Parapet Gutter Outlet Detail



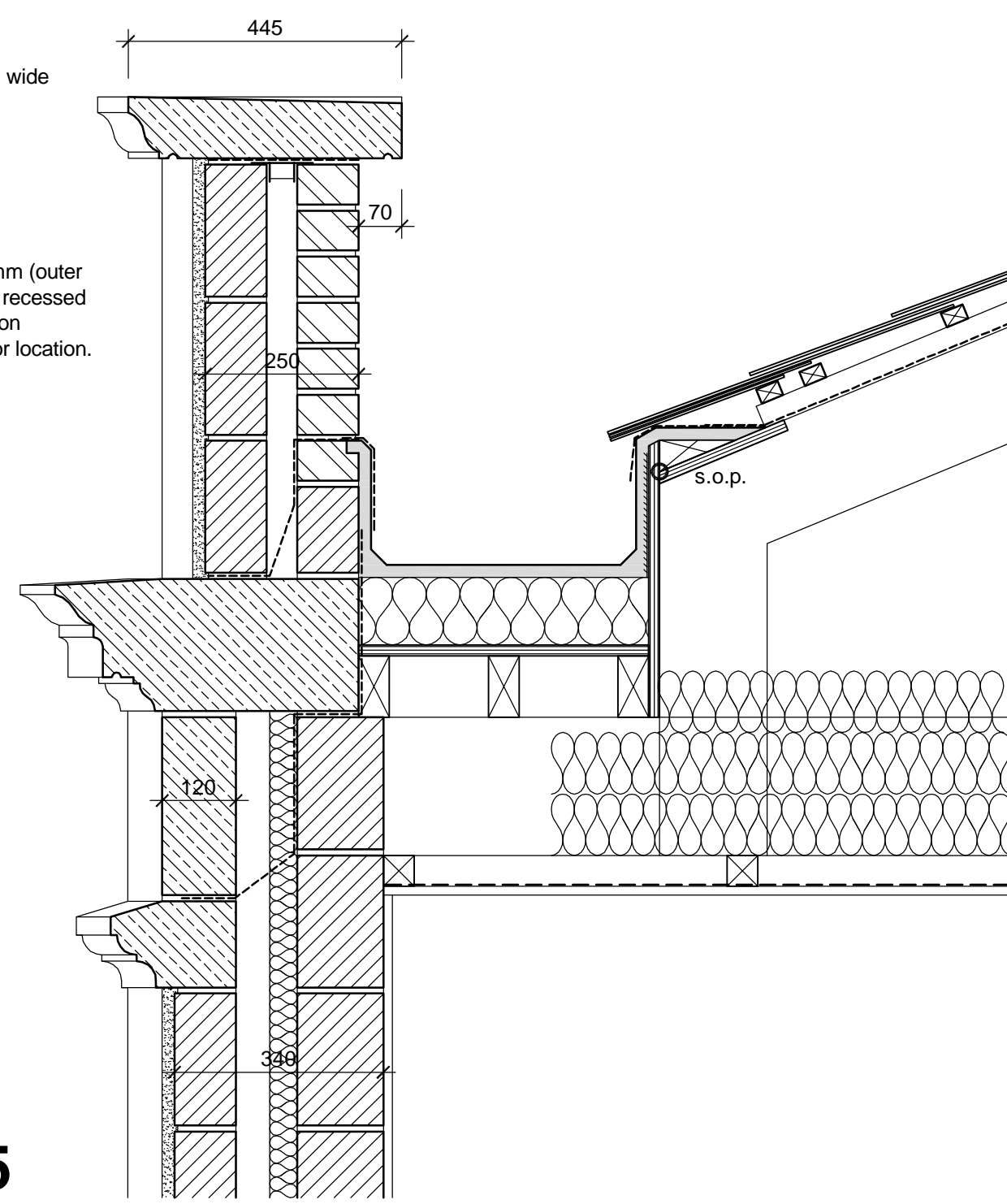
'Wade' threaded outlet type 'WC424' or similar approved

'Wade' Downspout Nozzle ref:WJ104. Spout flange to be silicone sealed against parapet upstand.

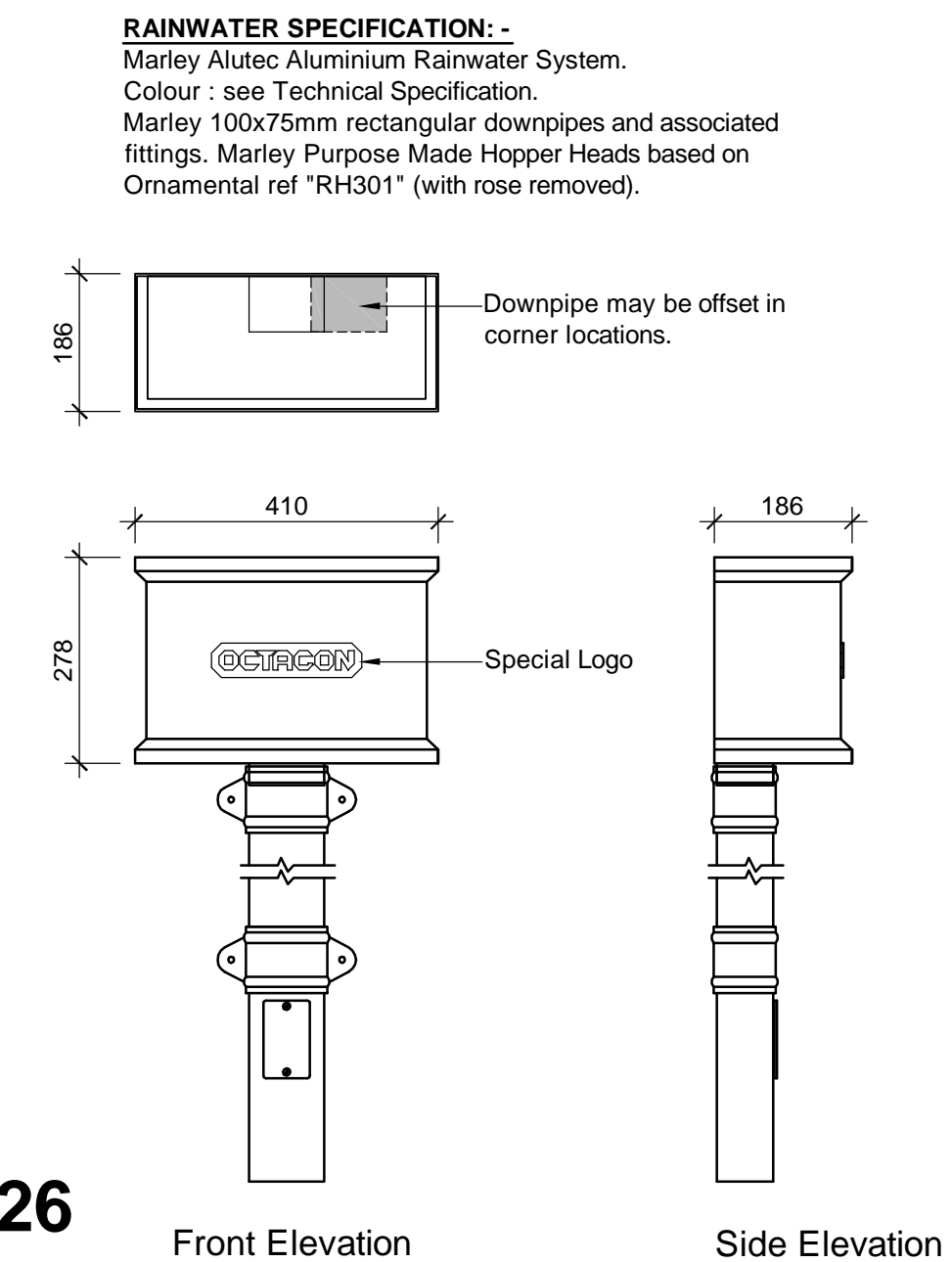
100mm high x 445mm wide Stone Coping - see separate details.

Cavity reduced to 50mm (outer skin moved) to create recessed panel on Front Elevation - see stone drawing for location.

D-25 Roof Reduced Width Parapet Detail



D-26 Roof Hopper Detail



RAINWATER SPECIFICATION: -
Marley Alutec Aluminium Rainwater System.
Colour : see Technical Specification.
Marley 100x75mm rectangular downpipes and associated fittings. Marley Purpose Made Hopper Heads based on Ornamental ref "RH301" (with rose removed).

Downpipe may be offset in corner locations.

Special Logo

Front Elevation

Side Elevation

A Construction Issue. 04.11.13

Revision Date



Octagon Developments Limited
Weir House Hurst Road
East Molesey Surrey KT8 9AQ
T: +44 (0) 208 481 7500
F: +44 (0) 208 481 7501
E: Octagon@Octdev.co.uk
W: www.Octdev.co.uk

Project
Overbye, St Georges Hill
Title
Construction Details
Sheet 3

Status
Construction
Scale 1:10
Job number **0623**
Drawn sh
Drawing number **5002**
Date Oct. '13
Revision **A**