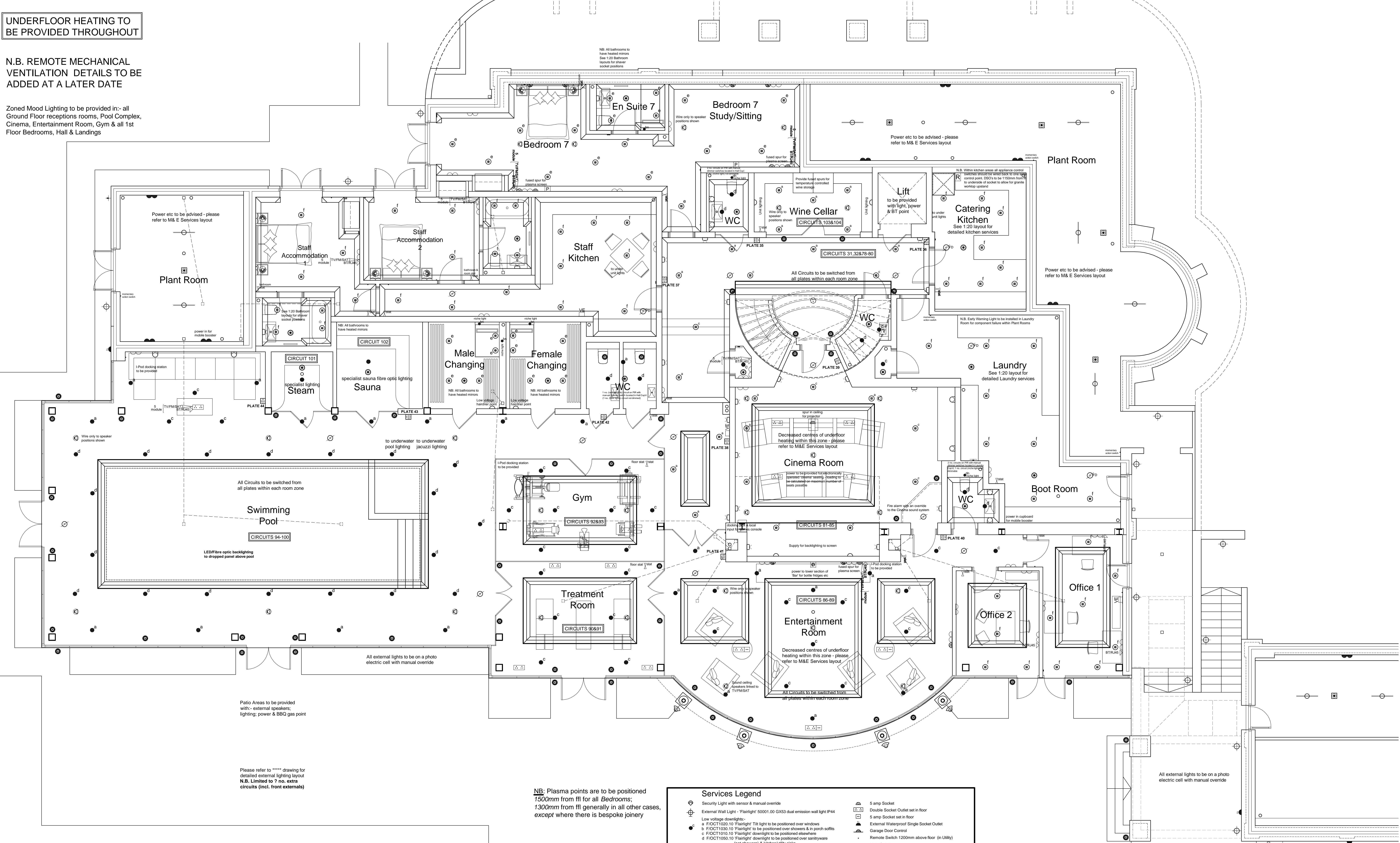


UNDERFLOOR HEATING TO BE PROVIDED THROUGHOUT

N.B. REMOTE MECHANICAL VENTILATION DETAILS TO BE ADDED AT A LATER DATE

Zoned Mood Lighting to be provided in:- all Ground Floor receptions rooms, Pool Complex, Cinema, Entertainment Room, Gym & all 1st Floor Bedrooms, Hall & Landings



Note:-

All electrical sockets, TV outlets, BT points, alarm panels, lights switches and other service outlets are to be fitted within a zone of 450mm and 1200mm from finished floor level.

Kitchen & Bathroom ventilation Mechanical ventilation to kitchens and bathrooms to be provided. Extraction rate to kitchens to be min. 30 litres/second and provided by an extraction cooker hood or an extraction fan with a min. extraction rate of 60 litres/second. Extraction rate to bathrooms to be min. 15 litres/second achieving 3 air changes with a 15 minutes over run.

Plumbing & Heating Regulations All works to comply with Octagon Developments Ltd., standard specification, the model water byelaws, BS6700 and the specific requirements of the Local Water Authority. A mains fed system shall only be installed when the running pressure in the water authority main is not less than 3 bar G with a min. flow rate of 50 litres/minute. IT SHALL BE THE CONTRACTORS RESPONSIBILITY TO CHECK THE ABOVE REQUIREMENT WITH THE WATER AUTHORITY.

NB see separate drawings for radiator and towel rad locations.

All electrical work required to meet the requirements for Part P (Electrical Safety) must be designed, installed, inspected and tested by a person competent to do so.

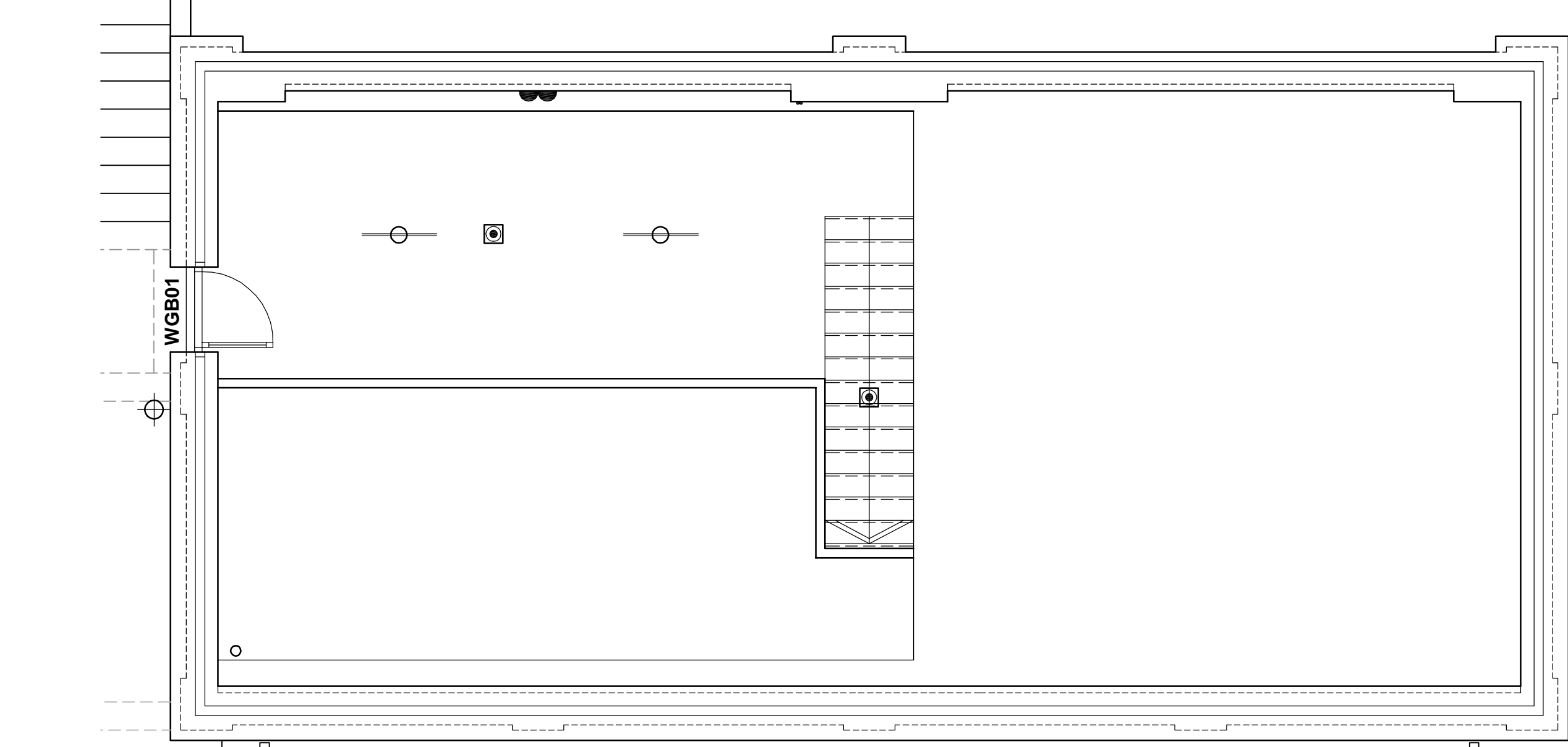
Prior to completion the council should be satisfied that Part P has been complied with. This may require an appropriate BS 7671 electrical installation certificate to be issued for the work by a person competent to do so.

This drawing should be read in conjunction with Fire Risk Assessment ref: TN/10404/01A

Note:-

All lights located in the 1st Floor ceiling of a 3 storey dwelling should be 'Fire Rated' please refer to lighting schedule for references.

All lights located in the 1st Floor ceiling of a 2 storey dwelling should be fitted with an 'air tight box'.



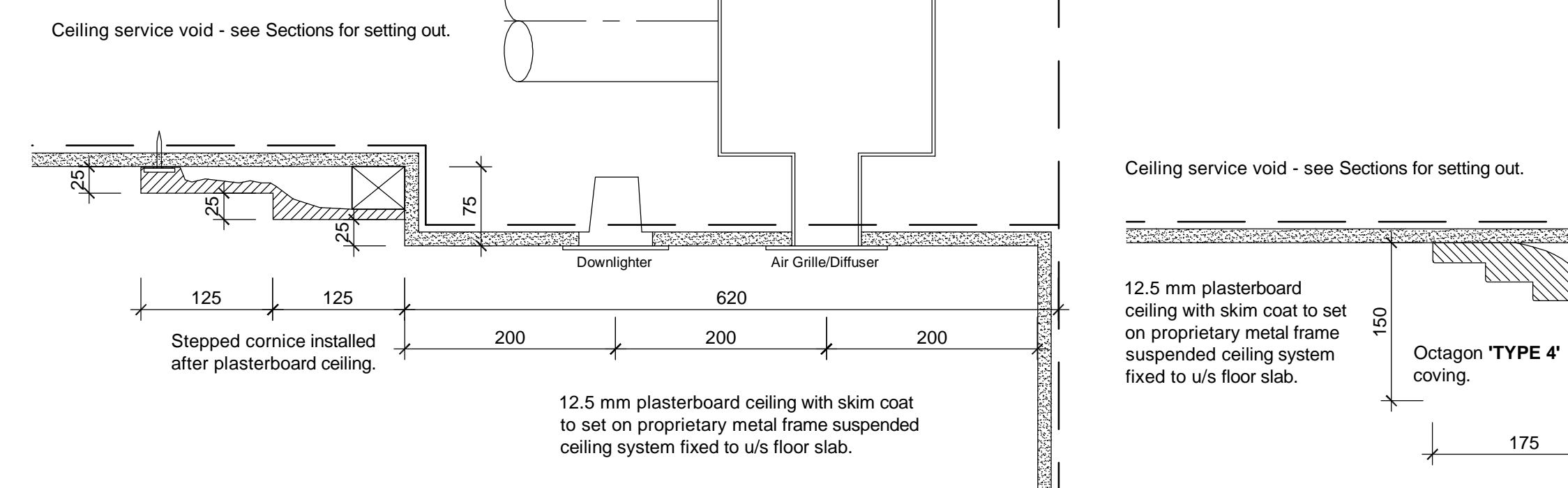
Garage Plan

NB: Plasma points are to be positioned 1500mm from flt for all Bedrooms; 1300mm from flt generally in all other cases, except where there is bespoke joinery

Plasma Areas to be provided with:- external speakers; lighting; power & BBQ gas point

Please refer to \*\*\*\*\* drawing for detailed external lighting layout N.B. Limited to 7 no. extra circuits (incl. from externals)

Services Legend table listing various electrical symbols and their descriptions, including Security Light, External Wall Light, Low voltage downlights, LED Niche Lights, and various switches and outlets.



'Low energy' fittings must have a minimum of 5 Watts per fitting, with a minimum of 45 Lumens per Watt. Each fitting must also have a minimum of 400 Lumens



Octagon Developments Limited, Wey House, Haver Road, East Molesey, Surrey, KT8 8AV. Tel: +44 (0) 208 481 7500. Fax: +44 (0) 208 481 7501. Email: octagon@octagon.co.uk. Website: www.octagon.co.uk

Project: Overbye, South Rd, Weybridge

Title: Lower Ground floor Services Layout

Status: Construction

Scale: 1:50. Date: Jul '13

Job number: 0623. Drawing number: 2020. Revision