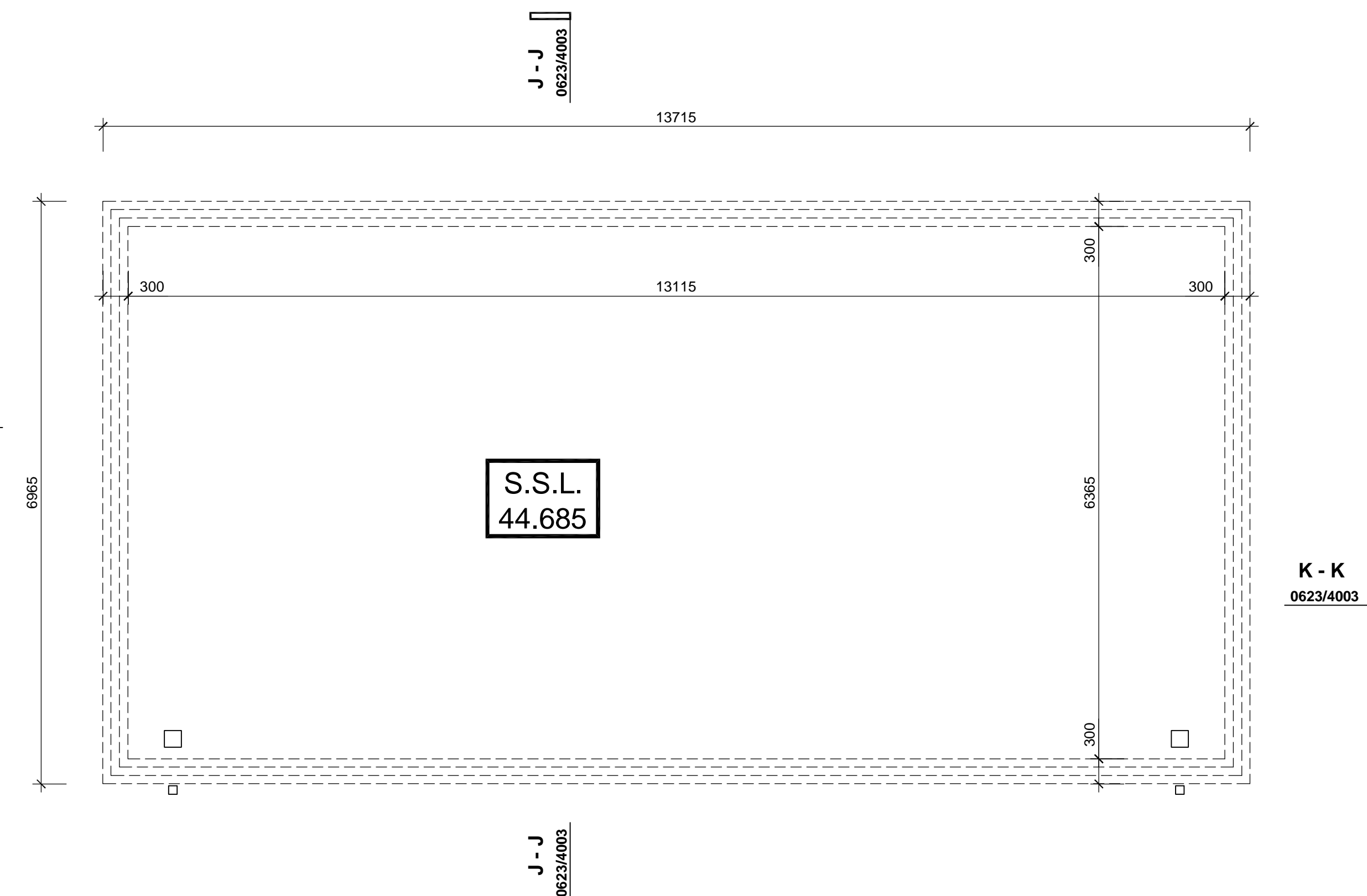
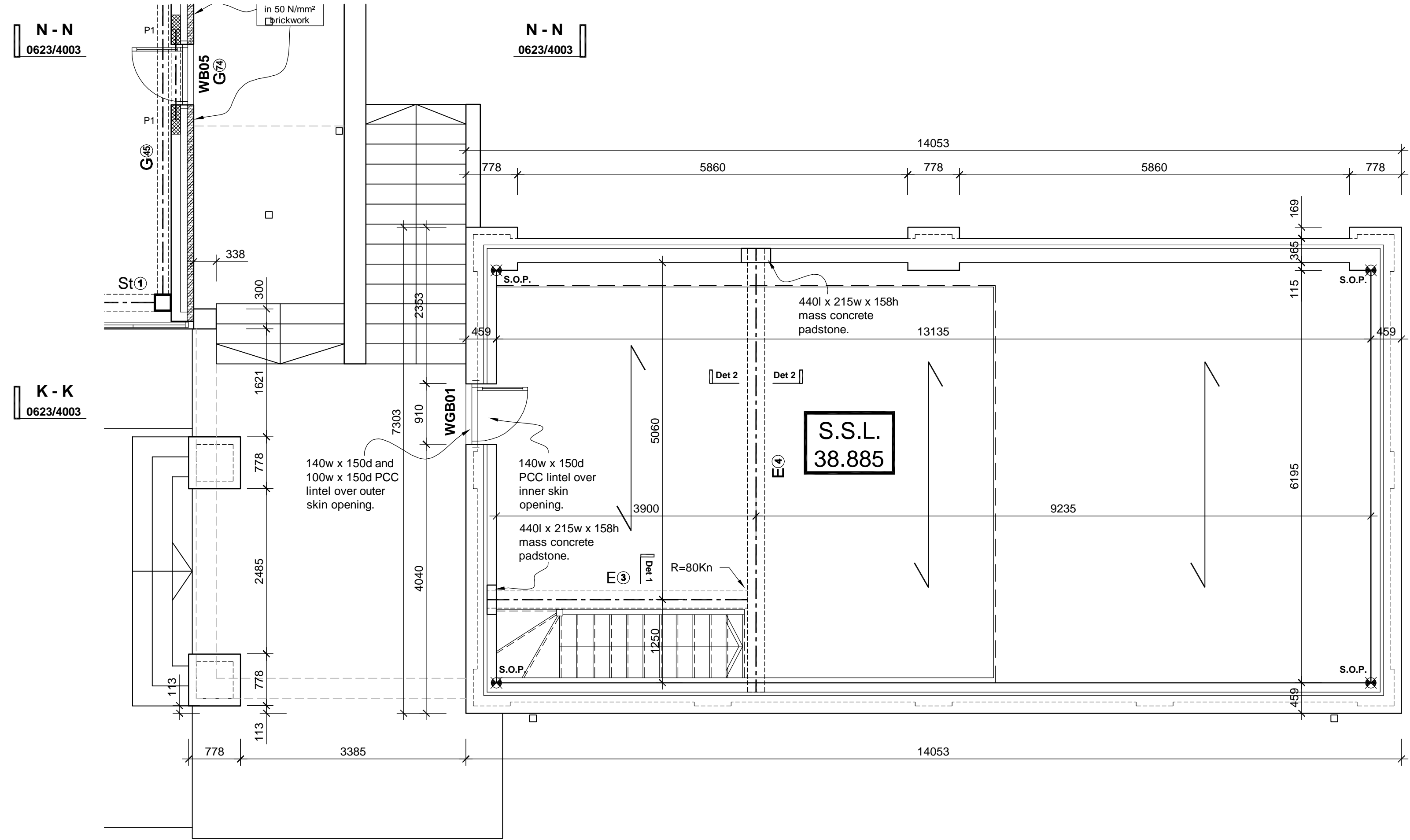


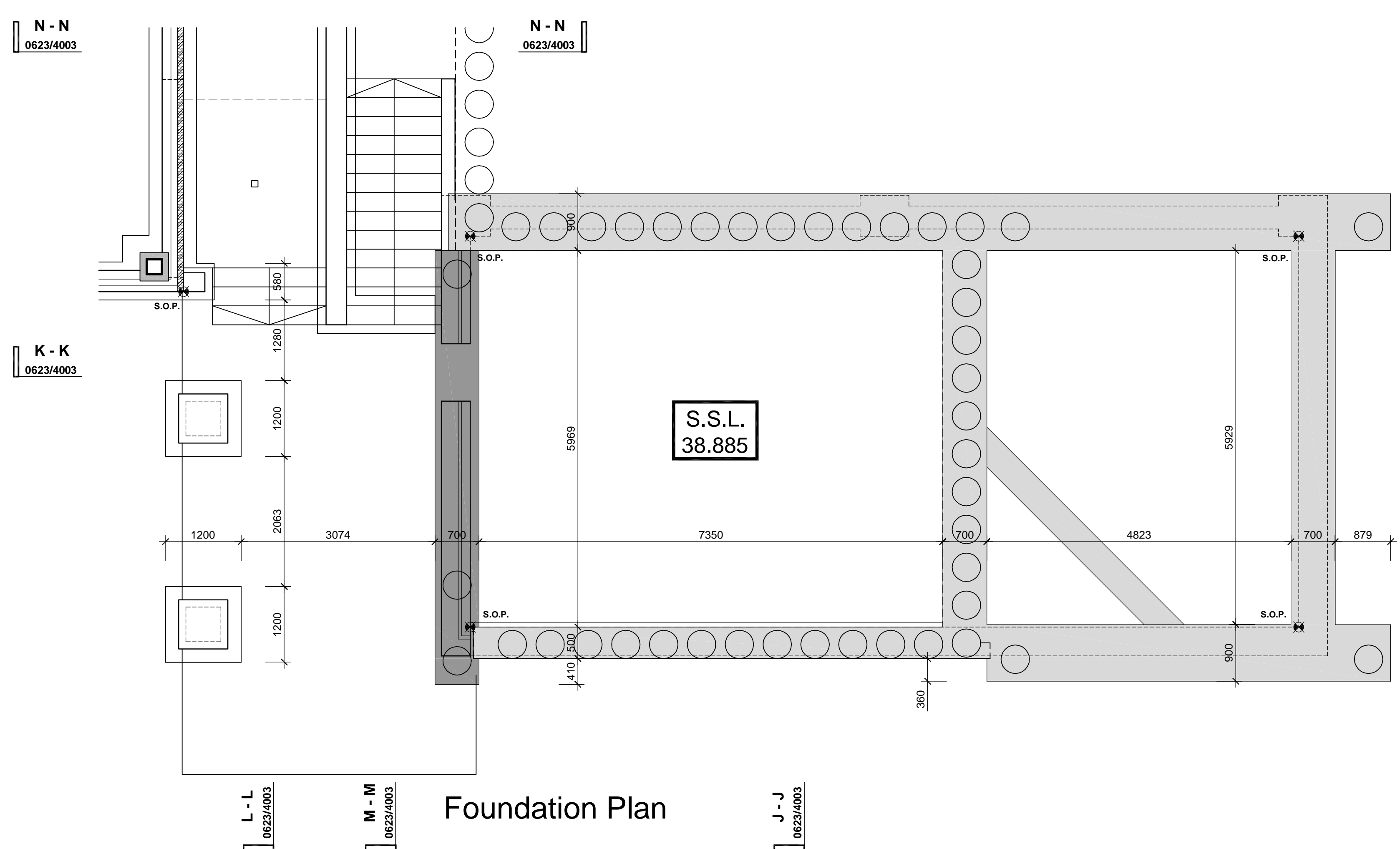
Garage Ground Floor Plan



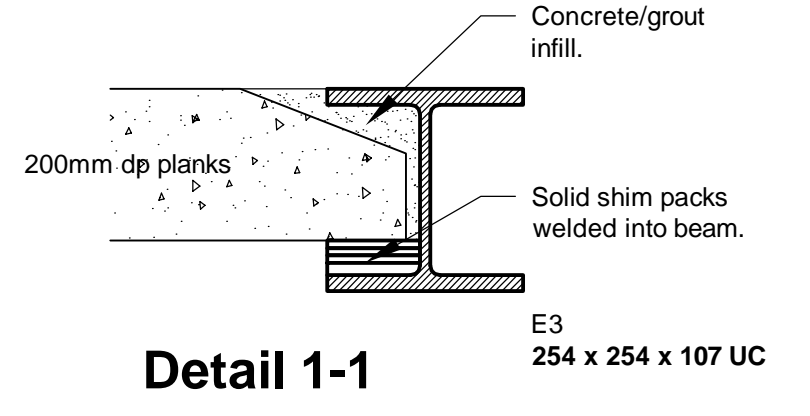
Roof Plan
At parapet wall level



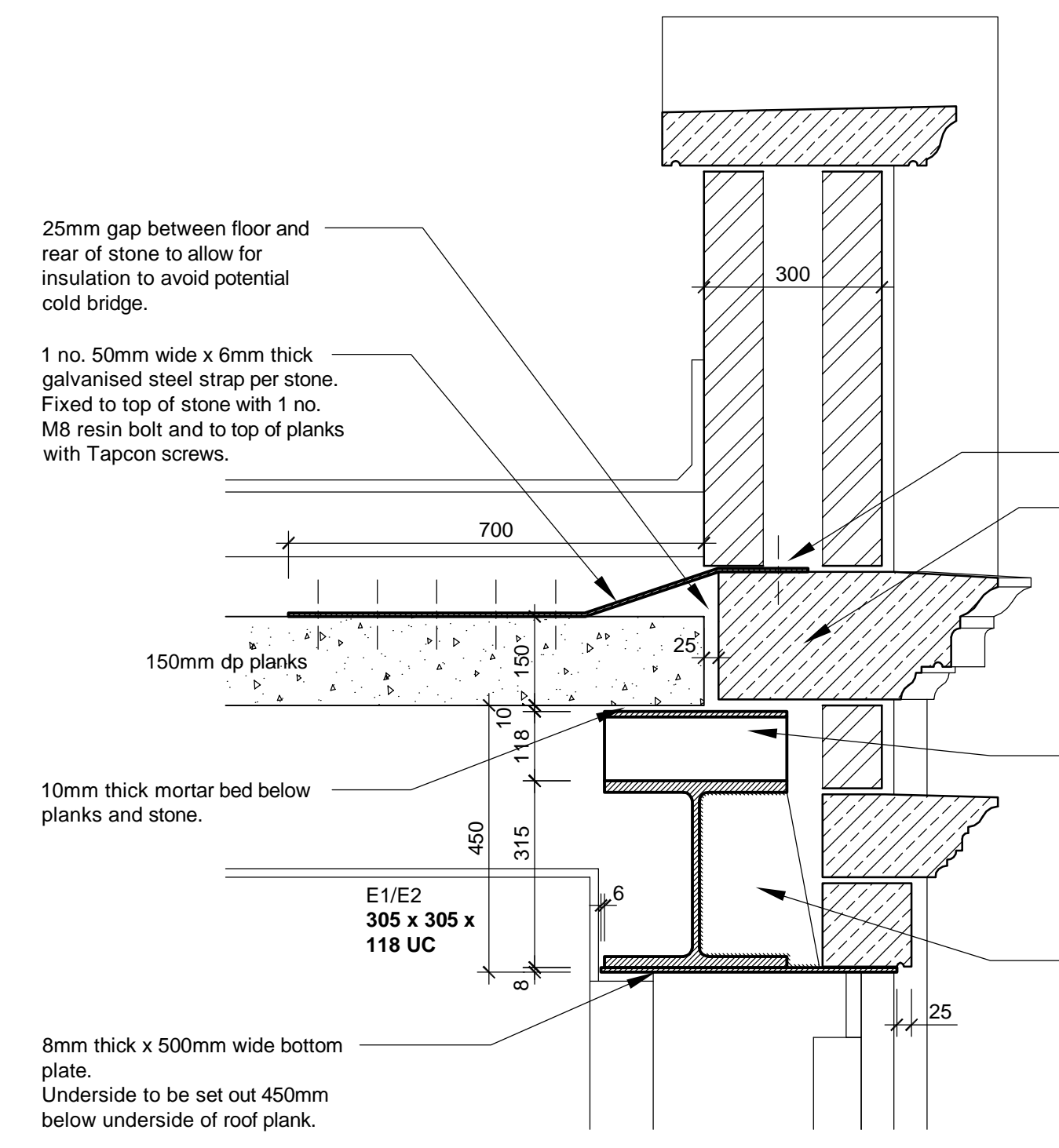
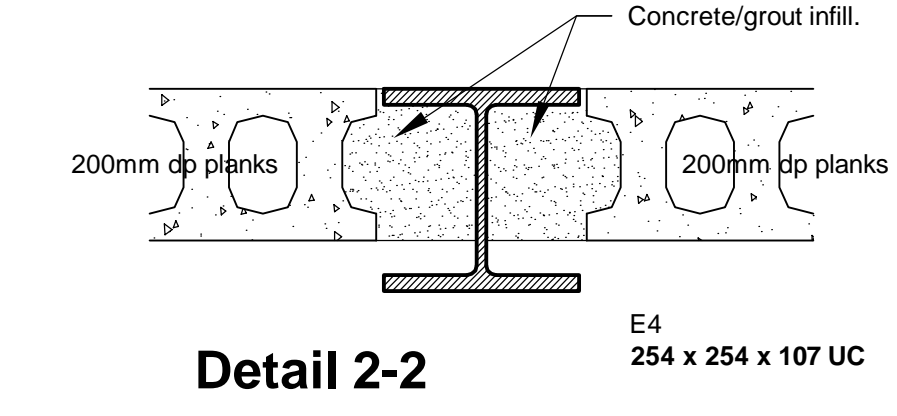
Garage Basement Plan



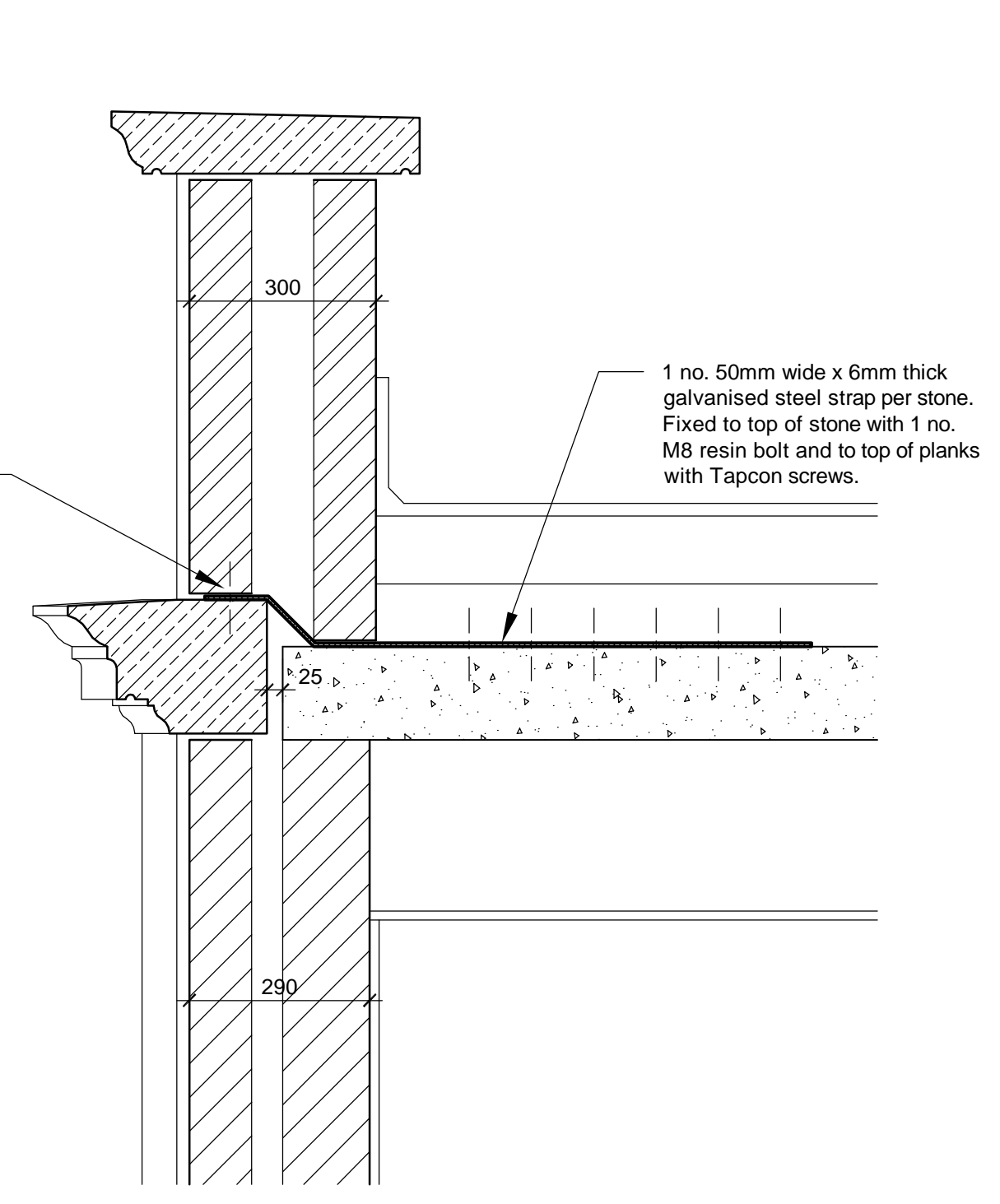
Foundation Plan



K - K
0623/4003



K - K
0623/4003



Detail 4-4

Drawing to be read in conjunction with Engineers garage drawings 1225/01 & 02.

NOTES

- Concrete block padstones below beam bearing of min strength 21N/mm². Beams to have full bearing on padstones.

Padstone Ref	L	W	D
P1	440	140	215mm
P2	440	215	215mm
P3	600	215	215mm
P4	600	140	215mm
P5	440	330	215mm
P6	755	215	215mm
P7	550	215	215mm
P8	800	215	215mm
P9	440	100	215mm
P10	330	330	215mm
P11	440	140	215mm (curved)
P12	778	330	215mm

- Inner skin of cavity walls and all blockwork walls from basement to roof plate level to be in blocks of strength 7.3 N/mm² set in 1:1.5 mortar (cement : lime : sand) unless noted otherwise.
- Where floor spans are parallel to external walls, floor planks are to be built-in to wall to act as lateral restraint.
- All internal block walls are to be fully bonded to external walls.
- Arrows denote direction on span of 200mm deep hollow core concrete floor units in Ground floor zone of Garage. Planks to be designed by specialist manufacturer to support unfactored D.L. = 2.10 kN/m² and unfactored L.L. = 2.50 kN/m² in addition to self weight of planks.
- Arrows denote direction on span of 200mm deep hollow core concrete floor units in roof of Garage. Planks to be designed by specialist manufacturer to support unfactored D.L. = 2.45 kN/m² and unfactored L.L. = 0.75 kN/m² in addition to self weight of planks.
- Denotes walls & piers in bricks of strength 50 N/mm² set in 1 : 1 : 3 mortar. (Cement : Lime : Sand)
- R = 15KN etc Denotes ultimate beam reactions for steel fabricator to design and detail appropriate connections. No connection to have less than 4no. M16 Grade 8.8 bolts.
- M.J. Denotes movement joint (see elevations).

A Construction Issue 31.01.14

Revision Date



Octagon Developments Limited
 Water House, Hazel Road
 East Molesey, Surrey, KT8 5AV
 T: +44 (0) 208 481 7500
 F: +44 (0) 208 481 7501
 E: octagon@octagon.co.uk
 W: www.octagon.co.uk

Project
Overbye, St Georges Hill
 Title

Garage Floor Plans

Construction		
Scale	Drawn	Date
1:50	sh	Jan. '14
Job number	Drawing number	Revision
0623	2007	A

© Copyright Octagon Developments Limited