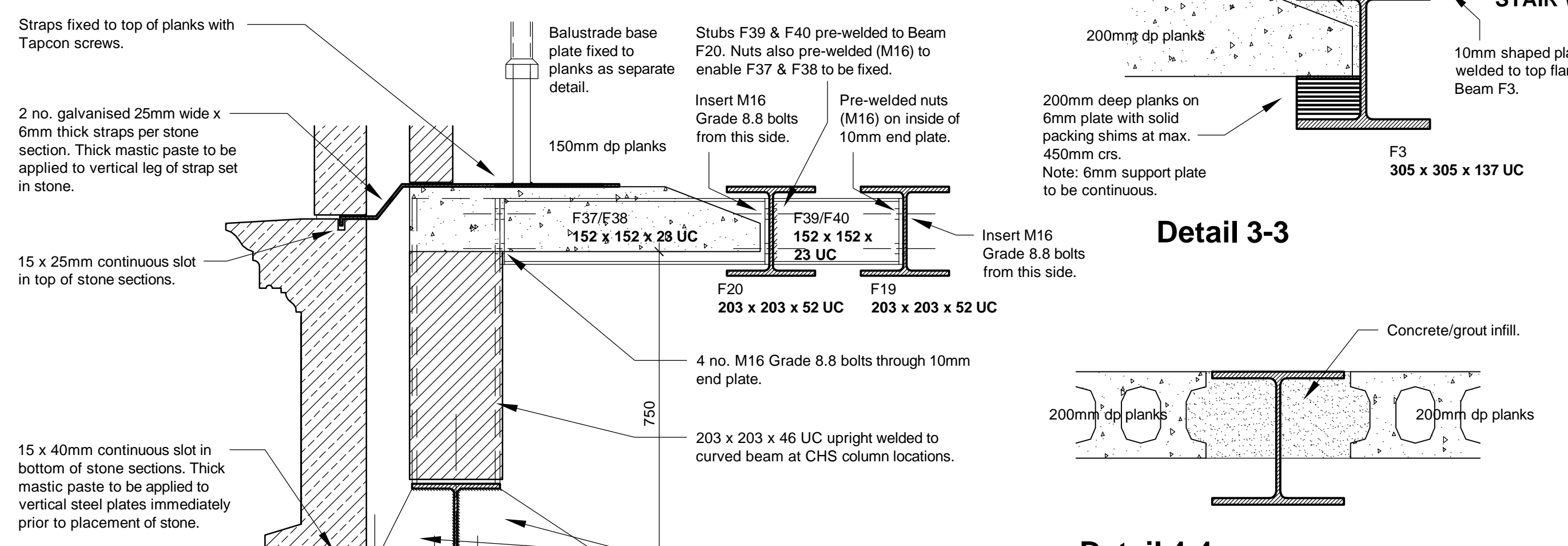
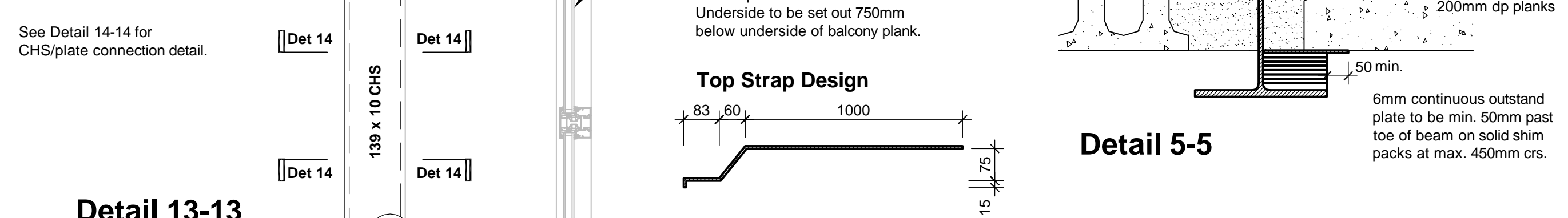


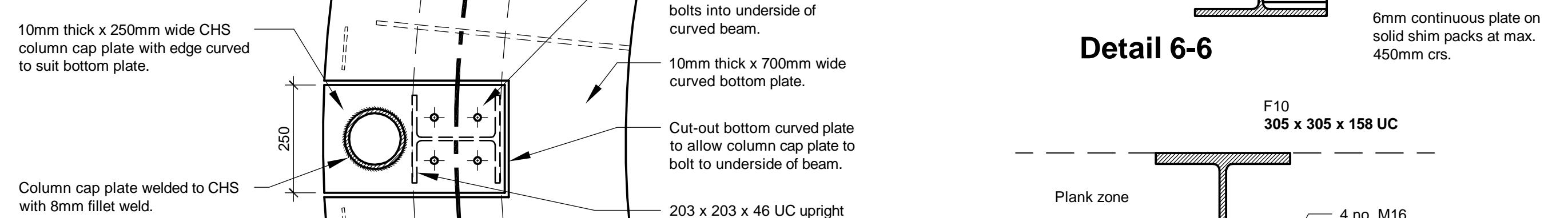
Detail 1-1



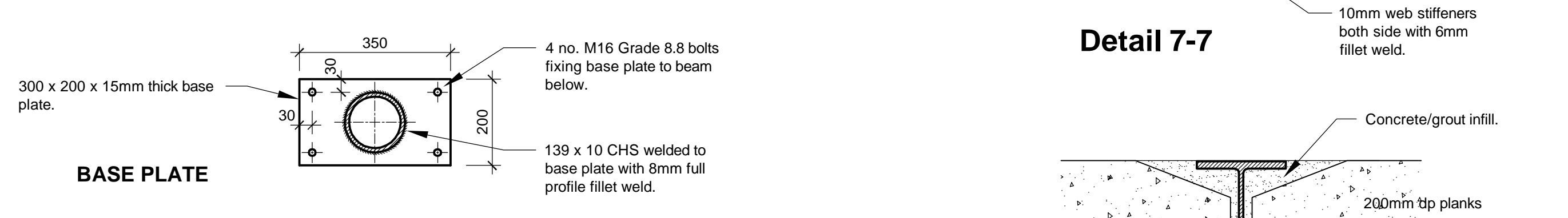
Detail 2-2



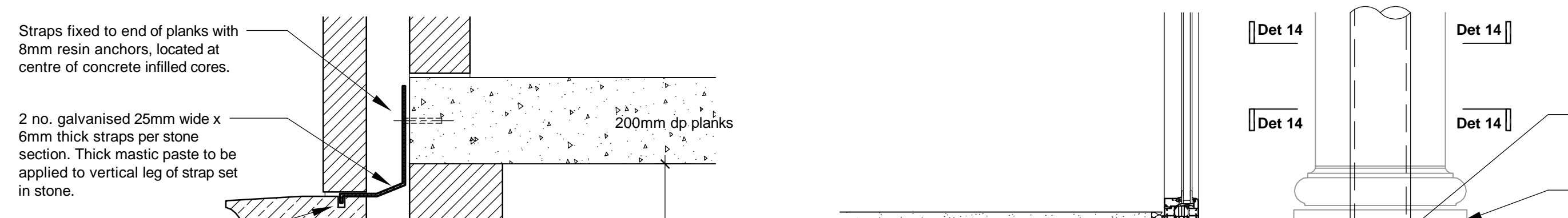
Detail 3-3



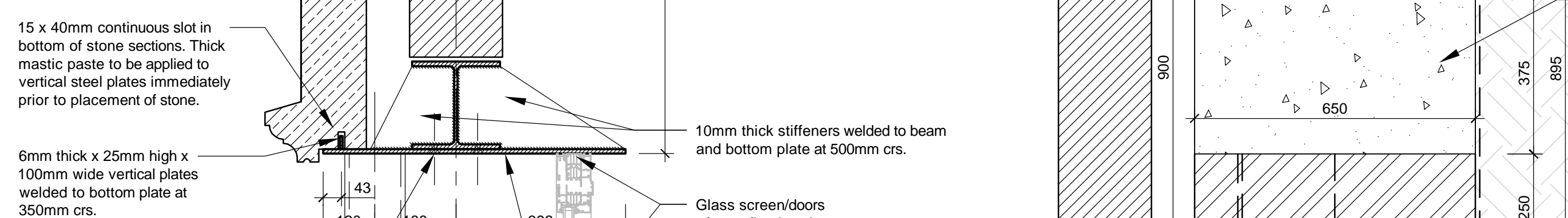
Detail 4-4



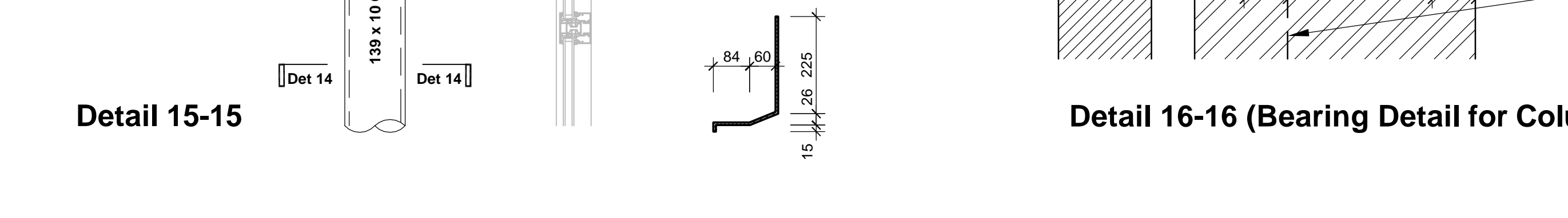
Detail 5-5



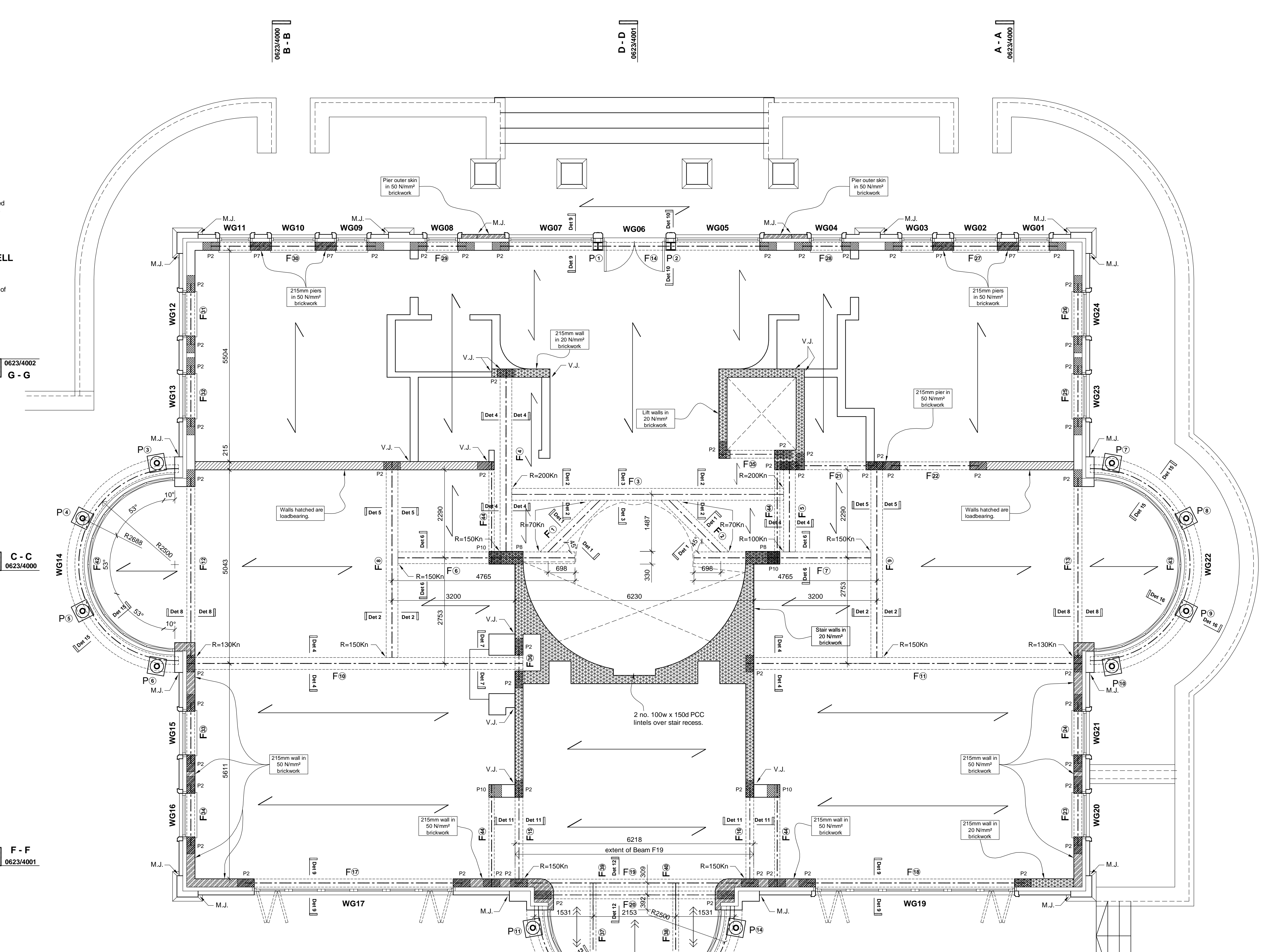
Detail 6-6



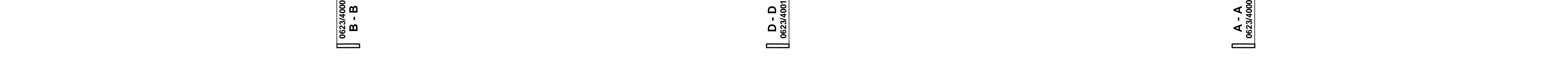
Detail 7-7



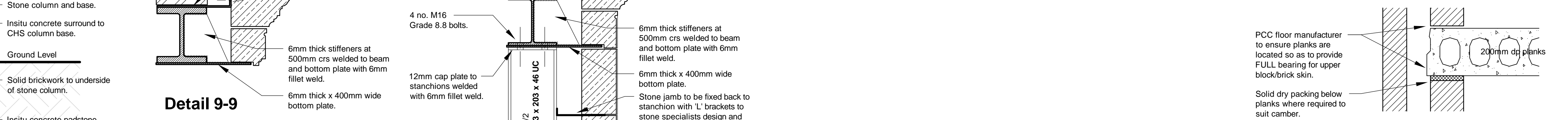
Detail 8-8



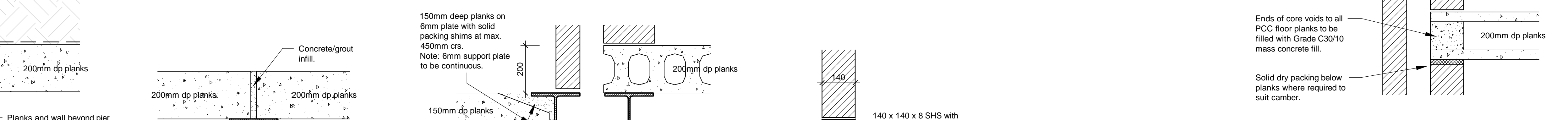
Ground Floor Plan showing - First Floor Structure



Detail 9-9



Detail 10-10



Detail 11-11



Detail 12-12

Detail 13-13

Detail 14-14

Detail 15-15

Detail 16-16

NOTES

Concrete block padstones below beam bearing of min strength 21N/m². Beams to have full bearing on padstones.

Padstone Ref	L	W	D
P1	440	215	215mm
P2	440	215	215mm
P3	600	215	215mm
P4	600	140	215mm
P5	440	330	215mm
P6	755	215	215mm
P7	560	215	215mm
P8	880	215	215mm
P9	440	110	215mm
P10	330	330	215mm
P11	440	140	215mm (curved)

Inner skin of cavity walls and all blockwork walls from basement to roof plate level to be in blocks of strength 7.3 N/mm² set in 1:1:6 mortar (cement : lime : sand) unless noted otherwise.

Catnic lintels to have minimum 150mm end bearing or as otherwise noted on drawing and to be installed in accordance with manufacturer's details.

Where first floor spans are parallel to external walls, floor planks are to be built-in to wall to act as lateral restraint.

Steel beams are to be located within depth of structural floor zone unless stated otherwise, and are to be fitted with ms support brackets where supporting and bearing of floor units. Floor units to have min. 75mm end bearing onto brackets. Refer to detail section showing bearing arrangement.

All internal block walls are to be fully bonded to external walls.

Use Catnic CN56XA lintels above all single door openings in 140mm walls unless otherwise noted on plan.

Arrows denote direction on span of 200mm deep hollow core concrete floor units in Ground floor zone to be designed by specialist manufacturer for unfactored D.L. = 3.60 kN/m² and L.L. = 1.50 kN/m² in addition to self weight of floor and non-loadbearing walls. Note: D.L. of 3.60 kN/m² contains an allowance of 1.0 kN/m² for partitions.

Arrows denote direction on span of 150mm deep hollow core concrete floor units to be designed by specialist manufacturer for unfactored D.L. = 3.60 kN/m² and L.L. = 1.50 kN/m² in addition to self weight of floor.

Denotes walls & piers in bricks of strength 50 N/mm² set in 1 : 1 : 3 mortar. (Cement : Lime : Sand)

Denotes walls & piers in bricks of strength 20 N/mm² set in 1 : 1 : 3 mortar. (Cement : Lime : Sand)

R = 15KN etc Denotes ultimate beam reactions in bricks of strength 50 N/mm² set in 1 : 1 : 3 mortar. No connection to have less than 4no. M16 Grade 8.8 bolts.

V.J. Denotes vertical tied joint in wall with wall ties at 225mm crs. vertically.

M.J. Denotes movement joint (see elevations).

Revision	Date
C	4 no beams F44 added over Kitchen and Drawing Room doors. Detail 16 added. Slab depths in stone band reduced. Straps/dimensions revised accordingly.
B	Plank floor notes revised.
A	Construction Issue.

OCTAGON

Octagon Developments Limited
 War House, Haverhill Road
 East Mottery, Surrey, KT8 8AV
 T: +44 (0) 208 481 7500
 F: +44 (0) 208 481 7501
 E: octagon@octagon.co.uk
 W: www.octagon.co.uk

Project: **Overbye, St Georges Hill**

Title: **First Floor Structure Plan**

Status: Construction

Scale	Drawn	Date
1:50	sh	Mar. '13

Job number	Drawing number	Revision
0623	2005	C

© Copyright Octagon Developments Limited