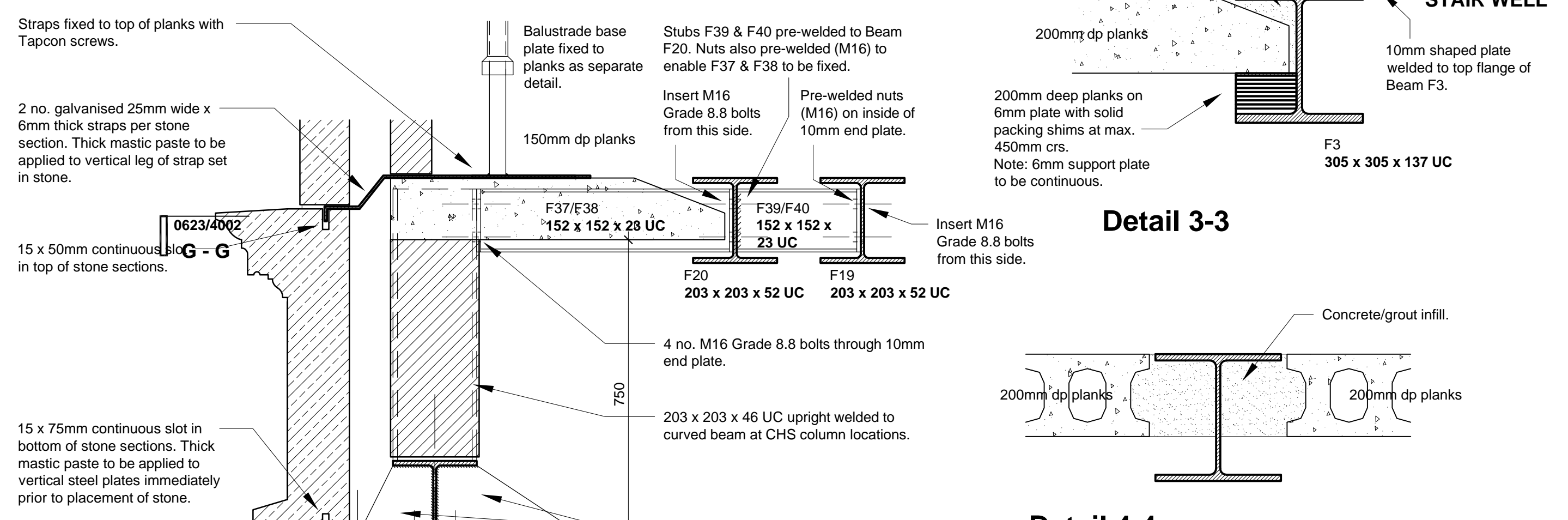
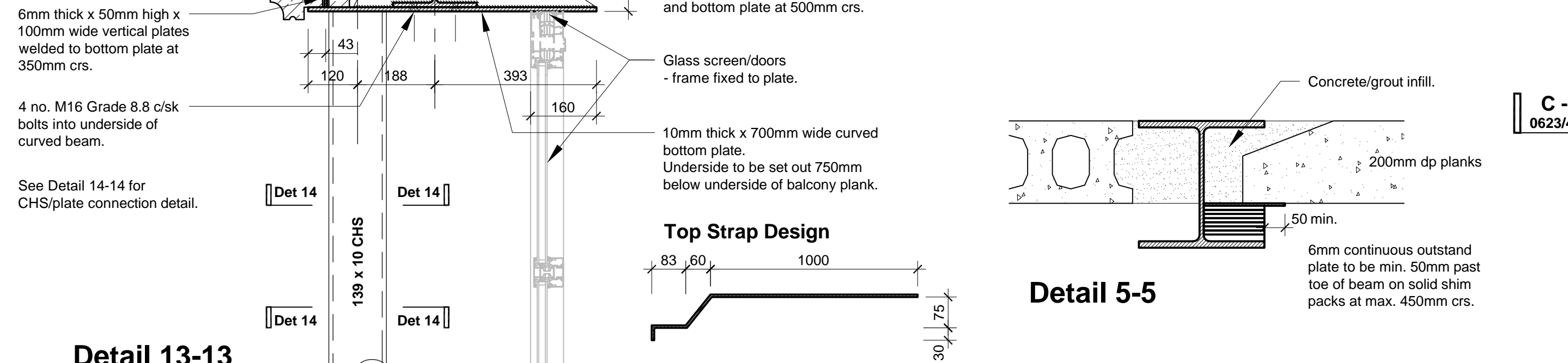


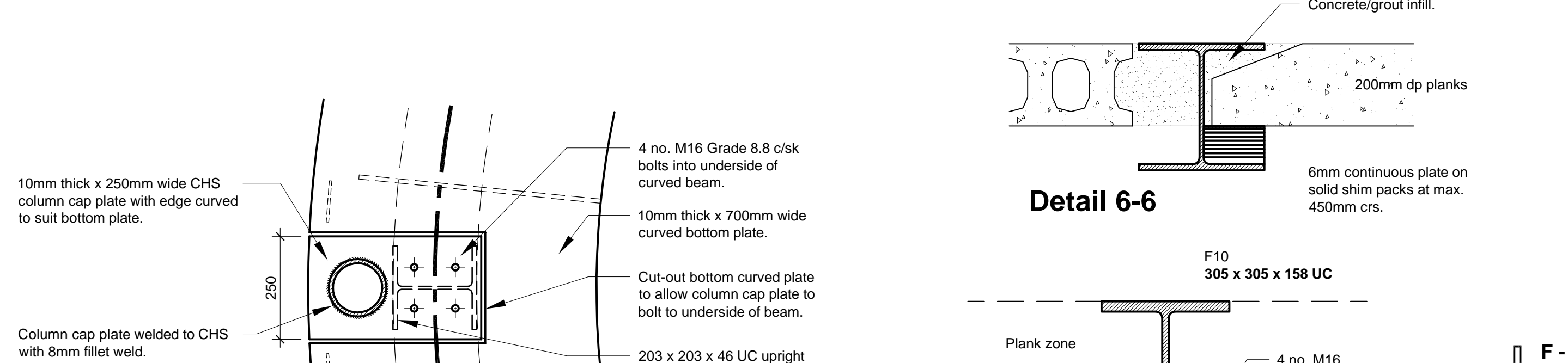
Detail 1-1



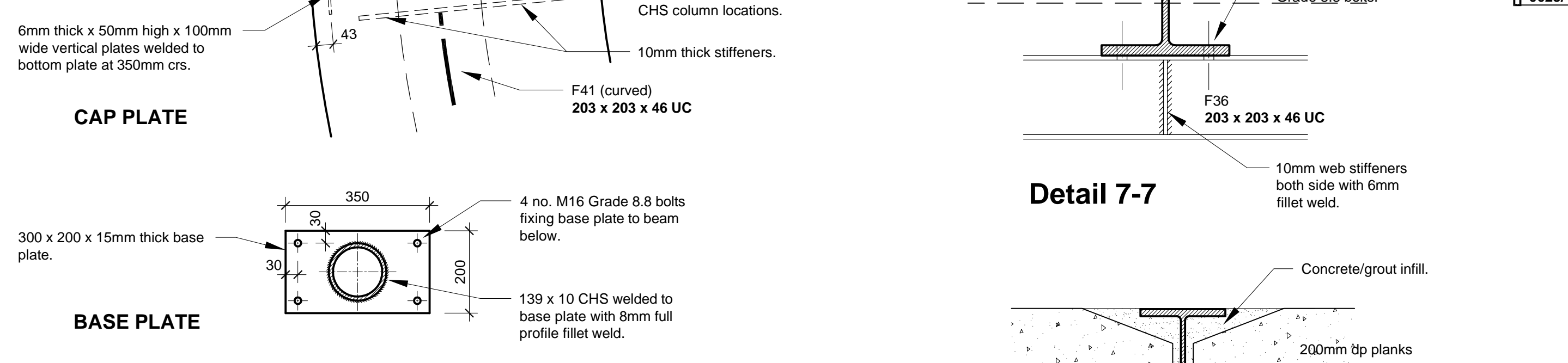
Detail 2-2



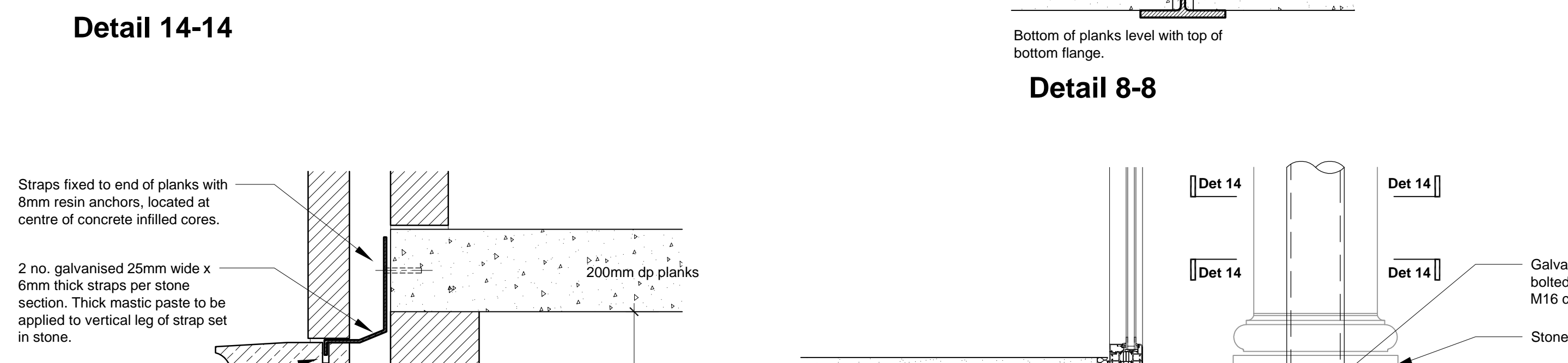
Detail 3-3



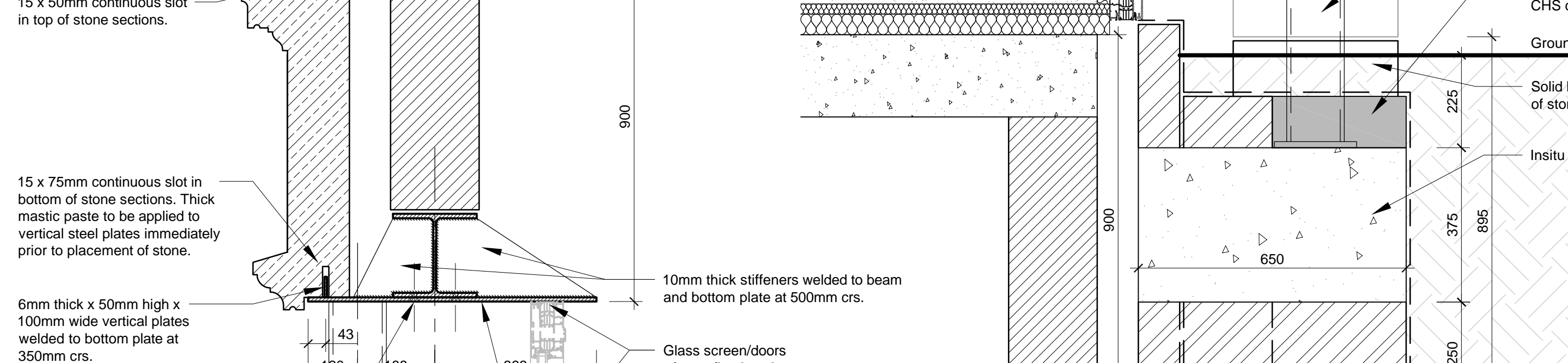
Detail 4-4



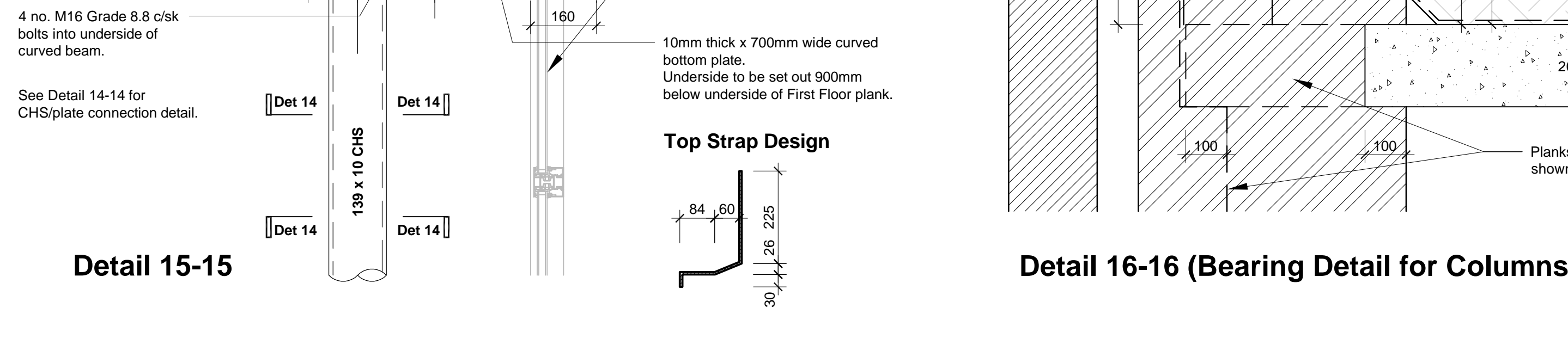
Detail 5-5



Detail 6-6

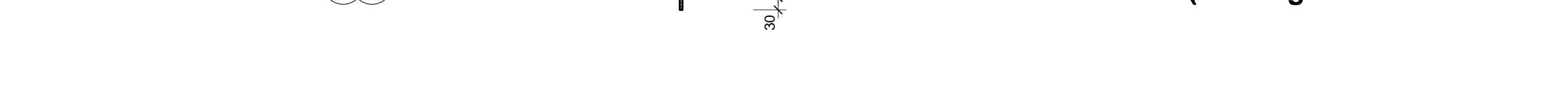


Detail 7-7



Detail 8-8

Detail 13-13

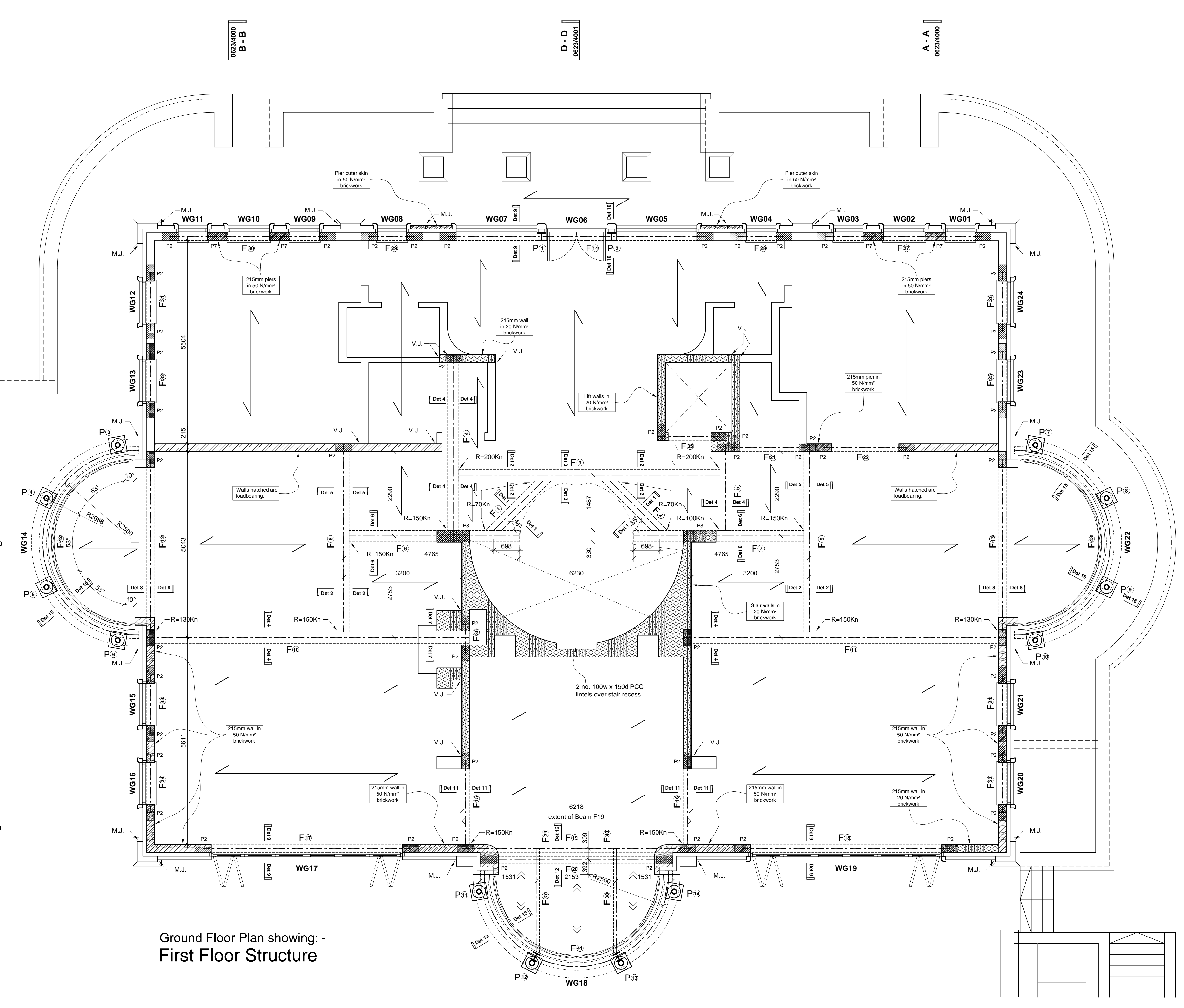


Detail 14-14

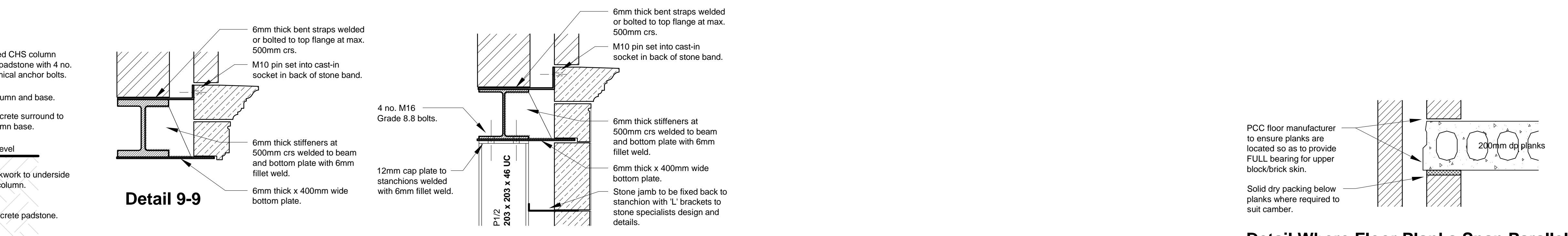


Detail 15-15

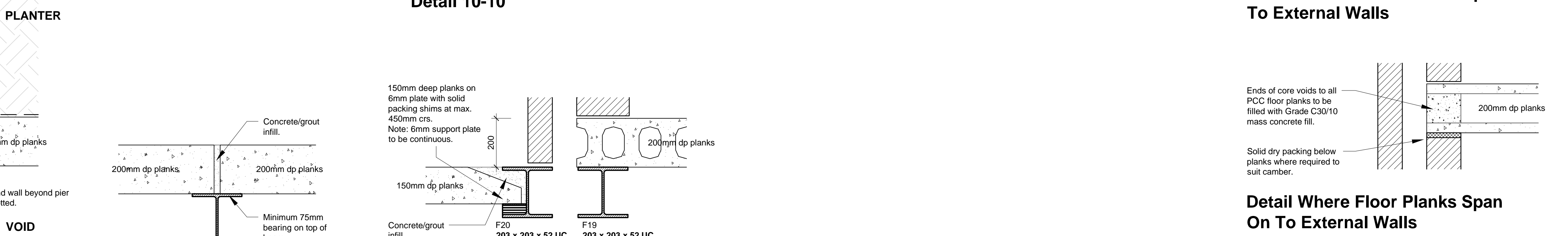
Detail 16-16 (Bearing Detail for Columns P7 to P10)



Detail 9-9



Detail 10-10



Detail 11-11



Detail 12-12

NOTES

Concrete block padstones below beam bearing of min strength 21N/m². Beams to have full bearing on padstones.

| Padstone Ref | L | W | D |
|--------------|-----|-----|----------------|
| P1 | 440 | 140 | 215mm |
| P2 | 440 | 215 | 215mm |
| P3 | 600 | 215 | 215mm |
| P4 | 600 | 140 | 215mm |
| P5 | 440 | 330 | 215mm |
| P6 | 755 | 215 | 215mm |
| P7 | 560 | 215 | 215mm |
| P8 | 880 | 215 | 215mm |
| P9 | 440 | 100 | 215mm |
| P10 | 330 | 330 | 215mm |
| P11 | 440 | 140 | 215mm (curved) |

Inner skin of cavity walls and all blockwork walls from basement to roof plate level to be in blocks of strength 7.3 N/m² set in 1:1:6 mortar (cement : lime : sand) unless noted otherwise.

Catnic lintels to have minimum 150mm end bearing or as otherwise noted on drawing and to be installed in accordance with manufacturer's details.

Where first floor spans are parallel to external walls, floor planks are to be built-in to wall to act as lateral restraint.

Steel beams are to be located within depth of structural floor zone unless stated otherwise, and are to be fitted with ms support brackets where supporting and bearing of floor units. Floor units to have min. 75mm end bearing onto brackets. Refer to detail section showing bearing arrangement.

All internal block walls are to be fully bonded to external walls.

Use Catnic CN56XA lintels above all single door openings in 140mm walls unless otherwise noted on plan.

Arrows denote direction on span of 200mm deep hollow core concrete floor units in Ground floor zone to be designed by specialist manufacturer for unfactored D.L. = 3.60 kN/m² and L.L. = 1.50 kN/m² in addition to self weight of floor and non-loading walls. Note: D.L. of 3.60 kN/m² contains an allowance of 1.0 kN/m² for partitions.

Arrows denote direction on span of 150mm deep hollow core concrete floor units to be designed by specialist manufacturer for unfactored D.L. = 3.60 kN/m² and L.L. = 1.50 kN/m² in addition to self weight of floor.

Denotes walls & piers in bricks of strength 50 N/m² set in 1 : 1 : 3 mortar. (Cement : Lime : Sand)

Denotes walls & piers in bricks of strength 20 N/m² set in 1 : 1 : 3 mortar. (Cement : Lime : Sand)

R = 15KN etc Denotes ultimate beam reactions for steel fabricator to design and detail appropriate connections. No connection to have less than 4no. M16 Grade 8.8 bolts.

V.J. Denotes vertical tied joint in wall with wall ties at 225mm crs. vertically.

M.J. Denotes movement joint (see elevations).

| Revision | Date |
|----------|------------------------------------|
| B | Plank floor notes revised 15.08.13 |
| A | Construction Issue. 10.07.13 |

Revision **Date**

Octagon

Octagon Developments Limited
 War House, Fossil Road
 East Mottery, Surrey, KT3 5AY
 T: +44 (0) 208 481 7500
 F: +44 (0) 208 481 7501
 E: octagon@octagon.co.uk
 W: www.octagon.co.uk

Project: **Overby, St Georges Hill**

Title: **First Floor Structure Plan**

Status: **Construction**

| Scale | Drawn | Date |
|-------|-------|----------|
| 1:50 | sh | Mar. '13 |

| Job number | Drawing number | Revision |
|------------|----------------|----------|
| 0623 | 2005 | B |

© Copyright Octagon Developments Limited