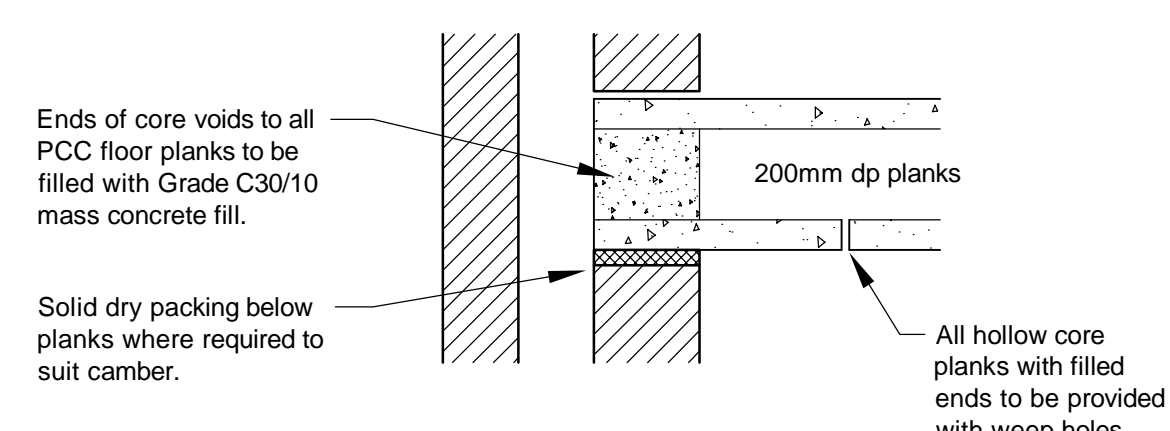


Detail Where Floor Planks Span Parallel To External Walls



Detail Where Floor Planks Span On To External Walls

Detail Above PCC Lintel Over Door Opening Below Beams G12, G14, G52 & G55

0623/4002 G - G

C - C 0623/4000

F - F 0623/4001

0623/4000 H - H

0623/4000 B - B

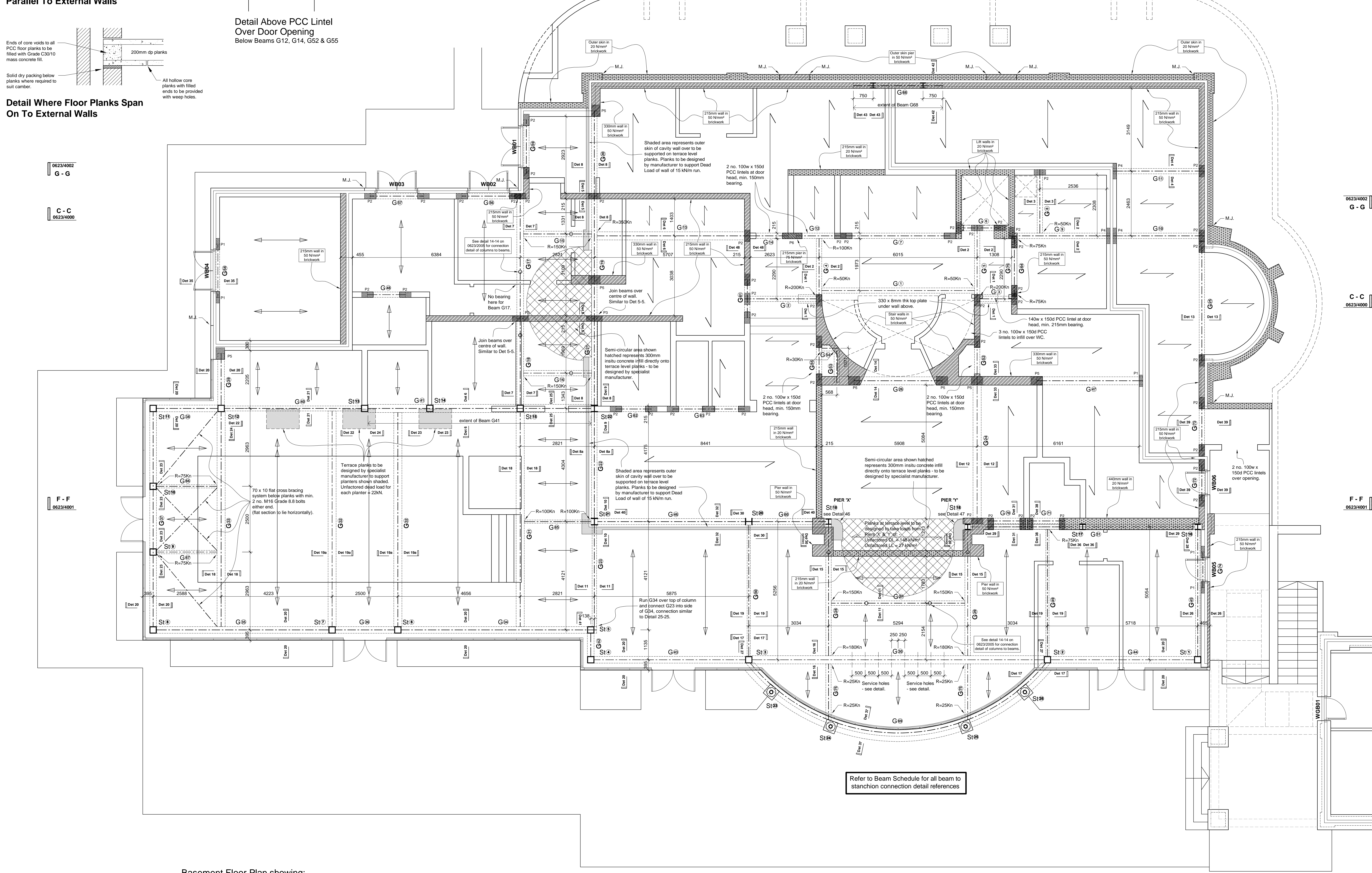
D - D 0623/4001

A - A 0623/4000

Refer to dwg. no. 0623/2011 for Ground Floor Structural Details.
Refer to dwg. no. 0632/9000 for setting out co-ordinates of columns.

Basement Floor Plan showing: - Ground Floor Structure

Refer to Beam Schedule for all beam to stanchion connection detail references



NOTES

- Concrete block padstones below beam bearing of min strength 21N/mm² beams to have full bearing on padstones.

Padstone Ref	L	W	D
P1	440	140	215mm
P2	440	215	215mm
P3	600	215	215mm
P4	600	140	215mm
P5	440	330	215mm
P6	755	215	215mm
P7	550	215	215mm
P8	880	215	215mm
P9	440	100	215mm
P10	330	330	215mm
P11	440	140	215mm (curved)

- Inner skin of cavity walls and all blockwork walls from basement to roof plate level to be in blocks of strength 7.3 N/mm² set in 1:1:6 mortar (cement : lime : sand) unless noted otherwise.
- Catnic lintels to have minimum 150mm end bearing or as otherwise noted on drawing and to be installed in accordance with manufacturer's details.
- Where first floor spans are parallel to external walls, floor planks are to be built-in to wall to act as lateral restraint.
- Steel beams are to be located within depth of structural floor zone unless stated otherwise, and are to be fitted with ms support brackets where supporting end bearing of floor units. Floor units to have min. 75mm end bearing onto brackets. Refer to detail section showing bearing arrangement.
- All internal block walls are to be fully bonded to external walls.
- Use Catnic C56XA lintels above all single door openings in 140mm walls unless otherwise noted on plan.
- Arrows denote direction on span of 200mm deep hollow core concrete floor units in Ground floor zone to be designed by specialist manufacturer for unfactored D.L. = 3.60 kN/m² and L.L. = 1.50 kN/m² in addition to self weight of floor and non-loadbearing walls. Note: D.L. of 3.60 kN/m² contains an allowance of 1.0 kN/m² for partitions.
- Arrows denote direction on span of 200mm deep hollow core concrete floor units in Terrace zone to be designed by specialist manufacturer for unfactored D.L. = 4.55 kN/m² and L.L. = 2.50 kN/m² in addition to self weight of floor, planters, external walls and insu concrete as noted.
- Arrows denote direction on span of 250mm deep hollow core concrete floor units in Ground floor zone to be designed by specialist manufacturer for the following unfactored loadings:
 - D.L. = 2.60 kN/m² and L.L. = 1.50 kN/m²
 - Loading from piers 'X' and 'Y' as noted on plan.
 - 300mm insitu concrete infill as noted on plan.
 - Self weight of planks and any non loadbearing partitions shown on the drawings.
- Arrows denote direction on span of 250mm deep hollow core concrete floor units in Terrace zone to be designed by specialist manufacturer for the following unfactored loadings:
 - D.L. = 4.55 kN/m² and L.L. = 2.50 kN/m²
 - Planters as shown on plan.
 - Self weight of planks.
- Denotes walls & piers in bricks of strength 70 N/mm² set in 1 : 1 : 3 mortar. (Cement : Lime : Sand)
- Denotes walls & piers in bricks of strength 50 N/mm² set in 1 : 1 : 3 mortar. (Cement : Lime : Sand)
- Denotes walls & piers in bricks of strength 20 N/mm² set in 1 : 1 : 3 mortar. (Cement : Lime : Sand)
- R = 15KN etc Denotes ultimate beam reactions for steel fabricator to design and detail appropriate connections. No connection to have less than 4no. M16 Grade 8.8 bolts.
- V.J. Denotes vertical tied joint in wall with wall ties at 225mm crs. vertically.
- M.J. Denotes movement joint (see elevations).

D	Hollow core floor plank support details	18.10.13
C	Beam G63 revised 2 no. beams G75 added.	01.10.13
B	200mm deep planks incorporated. Basement glazing plane moved 70mm.	15.08.13
A	Construction Issue.	10.07.13

Revision Date

OCTAGON

Octagon Developments Limited
 War House, Haver Road
 East Molesey, Surrey, KT8 8AV
 T: +44 (0) 208 481 7500
 F: +44 (0) 208 481 7501
 E: octagon@octagon.co.uk
 W: www.octagon.co.uk

Project
Overby, St Georges Hill

Title
Ground Floor Structure Plan

Construction		
Scale	Drawn	Date
1:50	sh	Mar. '13
Job number	Drawing number	Revision
0623	2004	D