

SETTING OUT AND LEVEL PLEASE

SECTION 1-1

SCHEDULE OF AIR COOLED CONDENSING UNITS

REF.	LOCATION	SYSTEM	MANUFACTURER	MODEL	COOLING (kW)	HEATING (kW)	DIMS(mm)			APPROX. WEIGHT (kg)	ELECTRICAL LOAD	REMARKS
							L	W	H			
CU1	EXTERNAL PLANT COMPOUND	2-PIPE VRV COMFORT COOLINGSYSTEM 1)	DAIKIN	RXYQ16P9	32.3	35.9	1240	765	1680	316	30 21.3A RC	
CU2	EXTERNAL PLANT COMPOUND	2-PIPE VRV COMFORT COOLINGSYSTEM 2)	DAIKIN	RXYQ12P9	25.1	24.2	930	755	1680	240	30 14A RC	
CU3	AIR HANDLING PLANTROOM	CONDENS ROOM COOLING	HABSTAIR									

SCHEDULE OF AIR HANDLING UNITS & EXTRACT FANS

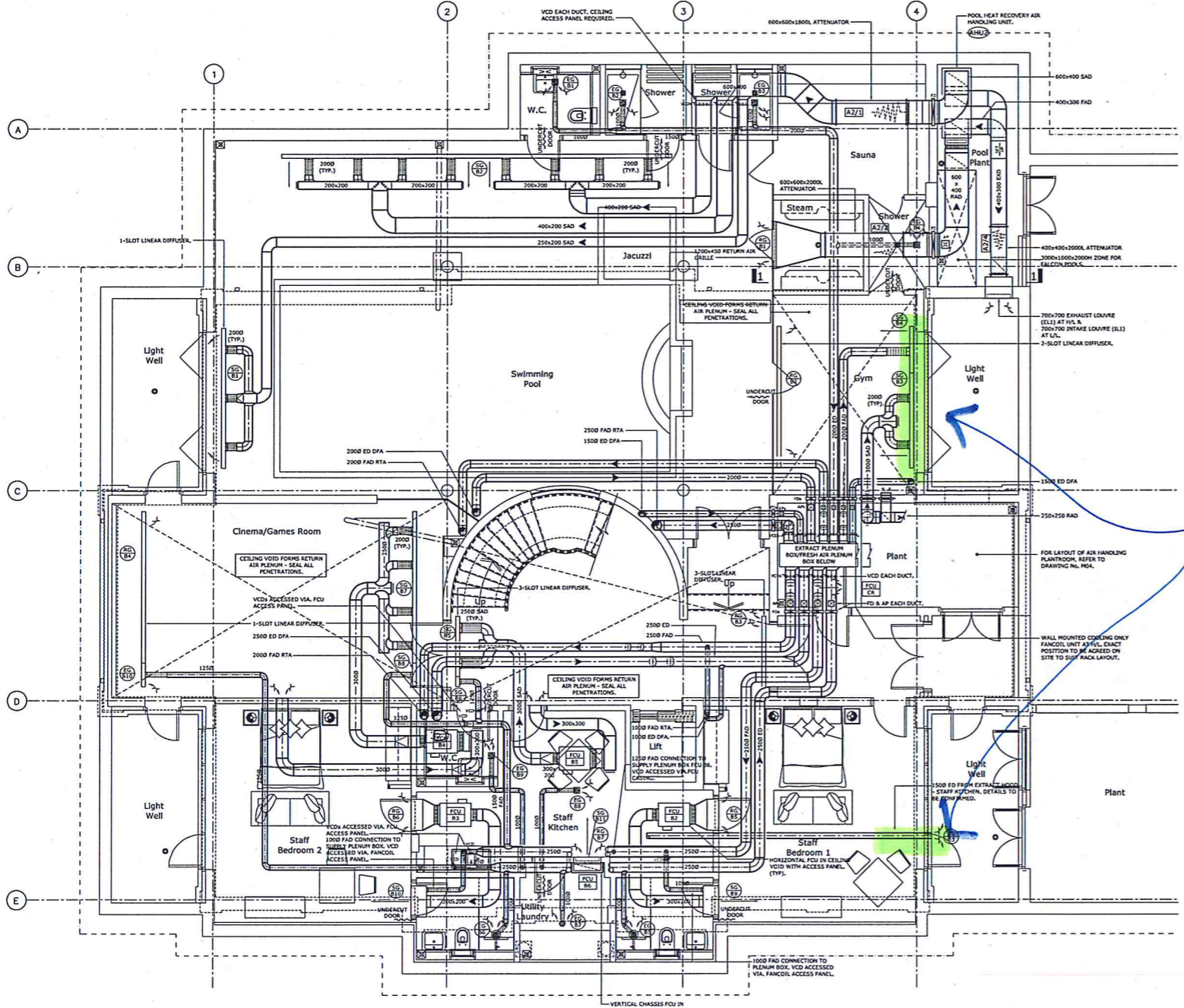
REF.	LOCATION	SYSTEM	SUPPLIER	MODEL	SUPPLY m³/s	EXTRACT m³/s	Pa(ESP)	Pa(ESP)	DIMS(mm)			APPROX. WEIGHT(kg)	SFP (W/L/S)	THERMAL EFFICIENCY(%)	REMARKS	
									L	W	H					
AH11	AIR HANDLING PLANTROOM	GENERAL HEAT RECOVERY SYSTEM														
AH12	POOL PLANTROOM	POOL HEAT RECOVERY SYSTEM	HEATSTAR	PHOENIX EC3000 SUPER PLUS	0.83	230	0.39	150	30 5A/0	1770	745	2050	325	0.81	90	SUPPLIED & POSITIONED BY FALCON POOLS.

REF.	LOCATION	TYPE	No. OFF	AIR VOLUME (m³/s) EA.	THROW (m)	ΔP Pa	NOISE LEVEL (NR)	DUCT SIZE(mm)		MANUFACTURERS REF.	VCD Y/N	REMARKS
								L	W			
SG B1	POOL	1-SLOT LINEAR DIFFUSER	1	0.218	3.75(VERTICAL)	12	28	3600	70	1F/END/S/B	Y	
SG B2	POOL	1-SLOT LINEAR DIFFUSER	1	0.614	7.65	12	28	10000	70	1F/END/S/B	Y	
SG B3	GYM	2-SLOT LINEAR DIFFUSER	1	0.15	3	3	<20	2400	118	2F/END/S/B	Y	CONTINUOUS WITH SG B4
SG B4	GYM	2-SLOT LINEAR DIFFUSER	1	0.67	3	3	<20	1200	118	2F/END/S/B	Y	CONTINUOUS WITH SG B3 (FRESH AIR)
SG B5	HALL	3-SLOT LINEAR DIFFUSER	1	0.15	4.5	6	<20	1550	162	3F/END/S/B	Y	CONTINUOUS WITH SG B6
SG B6	HALL	3-SLOT LINEAR DIFFUSER	1	0.63	4.5	6	<20	250	162	3F/END/S/B	Y	CONTINUOUS WITH SG B5 (FRESH AIR)
SG B7	CINEMA/GAMES	1-SLOT LINEAR DIFFUSER	1	0.15	4.0	8	<20	3900	70	1F/END/S/B	Y	CONTINUOUS WITH SG B8
SG B8	CINEMA/GAMES	1-SLOT LINEAR DIFFUSER	1	0.63	4.0	8	<20	600	70	1F/END/S/B	Y	CONTINUOUS WITH SG B7 (FRESH AIR)
SG B9	STAFF BEDROOM 1	LINEAR BAR GRILLE	1	0.17	4.0	6	<20	800	150	F15N158/CL	N	INC. 0.02m³/s FRESH AIR
SG B10	STAFF BEDROOM 2	LINEAR BAR GRILLE	1	0.17	4.0	6	<20	800	150	F15N158/CL	N	INC. 0.02m³/s FRESH AIR
SG B11	STAFF KITCHEN	LINEAR BAR GRILLE	1	0.15	4.0	6	<20	800	150	F15N158/CL	N	INC. 0.02m³/s FRESH AIR
RG B1	POOL	LINEAR BAR GRILLE	1	0.83	N/A	12	29	1200	450	F15N158/CL	N	
RG B2	GYM	2-SLOT LINEAR DIFFUSER	1	0.15	N/A	4	<20	3600	116	2F/END/S/B	Y	
RG B3	HALL	3-SLOT LINEAR DIFFUSER	1	0.15	N/A	8	23	1800	162	3F/END/S/B	Y	
RG B4	CINEMA/GAMES	1-SLOT LINEAR DIFFUSER	1	0.15	N/A	10	<20	3900	70	1F/END/S/B	Y	CONTINUOUS WITH EG B10
RG B5	STAFF BEDROOM 1	LINEAR BAR GRILLE	1	0.15	N/A	8	<20	800	150	F15N158/CL	N	
RG B6	STAFF BEDROOM 2	LINEAR BAR GRILLE	1	0.15	N/A	8	<20	800	150	F15N158/CL	N	
RG B7	STAFF KITCHEN	LINEAR BAR GRILLE	1	0.12	N/A	8	<20	800	150	F15N158/CL	N	
EG B1	POOL WC	LINEAR BAR GRILLE	1	0.018								
EG B2	POOL SHOWER	LINEAR BAR GRILLE	1	0.018								
EG B3	POOL SHOWER	LINEAR BAR GRILLE	1	0.018								
EG B4	POOL SHOWER	LINEAR BAR GRILLE	1	0.018								
EG B5	STAFF ENSUITE 1	LINEAR BAR GRILLE	1	0.018	N/A	7	<20	150	150	F15N158/CL/08	Y	
EG B6	STAFF ENSUITE 2	LINEAR BAR GRILLE	1	0.02	N/A	7	<20	150	150	F15N158/CL/08	Y	
EG B7	UTILITY/LAUNDRY	LINEAR BAR GRILLE	1	0.016	N/A	7	<20	150	150	F15N158/CL/08	Y	
EG B8	STAFF KITCHEN	LINEAR BAR GRILLE	1	0.018	N/A	7	<20	150	150	F15N158/CL/08	Y	
EG B9	WC	LINEAR BAR GRILLE	1	0.026	N/A	7	<20	150	150	F15N158/CL/08	Y	
EG B10	CINEMA/GAMES	1-SLOT LINEAR DIFFUSER	1	0.63	N/A	10	<20	600	70	1F/END/S/B	Y	CONTINUOUS WITH RG B4

NOTES:  
 1. ALL GRILLES & DIFFUSERS SHALL BE AS MANUFACTURED BY BROOKE AIR SALES.  
 2. THIS SCHEDULE SHALL BE READ IN CONJUNCTION WITH THE HVAC DRAWINGS & SPECIFICATION.  
 3. PLENUM BOXES FOR LINEAR DIFFUSERS SHALL INCLUDE THE NUMBER & SIZES OF SPIGOT CONNECTIONS SHALL BE COMPLETE WITH A CORROSION RESISTANT PLUMBER. GRILLES SHALL BE FITTED WITH OPPOSED BLACK VCIN WHERE INDICATED. PLENUM BOXES FOR ALL LINEAR DIFFUSERS & GRILLES SHALL BE PAINTED MATT BLACK INTERNALLY. PLENUM BOX SIZES TO BE CONFIRMED.  
 4. GRILLES, DIFFUSERS & LOUVERES SHALL BE FINISHED PPG COLOUR TPC. LINEAR DIFFUSERS SHALL HAVE BLACK PATTERNS ADJUSTMENT TUBES.  
 5. ALL GRILLES & DIFFUSERS SHALL HAVE CONCEALED FIXINGS - SCREW FIXING THROUGH FLANGES WILL NOT BE ACCEPTABLE.  
 6. THE HVAC SUB CONTRACTOR SHALL NOT USE THIS SCHEDULE FOR ORDERING PURPOSES WITHOUT FIRST CHECKING ALL DIMENSIONS ON SITE.  
 7. SETTING OUT DIMENSIONS SHALL BE TAKEN FROM THE ARCHITECTS REFLECTED CEILING PLANS & NOT SCALED FROM THE HVAC DRAWINGS.  
 NOTE:  
 GRILLES/DIFFUSER SCHEDULE IS INDICATED FOR TENDER PURPOSES ONLY. HVAC SUB CONTRACTOR SHALL NOT PLACE ORDERS UNTIL ALL DETAILS HAVE BEEN CO-ORDINATED WITH THE ARCHITECT & INTERIOR DESIGNER & FINAL INFORMATION IS CONFIRMED BY THE SERVICES CONSULTANT.

REF.	LOCATION	ROOM SERVED	TYPE	MODEL	COOLING (kW) SEN	m³/s	ESP Pa	NOMINAL DIMS(mm)			APPROX. WEIGHT (kg)	dBA	REMARKS
								L	W	H			
FCU B1	AIR HANDLING PLANTROOM	GYM	CONCEALED DUCTED	FXSQ 20 P	1.8	0.15	TBC	700	550	300	23	26.32	
FCU B2	STAFF KITCHEN	STAFF BEDROOM 1	CONCEALED DUCTED	FXSQ 20 P	1.8	0.15	TBC	700	550	300	23	26.32	
FCU B3	STAFF KITCHEN	STAFF BEDROOM 2	CONCEALED DUCTED	FXSQ 20 P	1.8	0.15	TBC	700	550	300	23	26.32	
FCU B4	WC	CINEMA/GAMES ROOM	CONCEALED DUCTED	FXSQ 25	3.0	0.15	TBC	700	550	300	23	26.32	
FCU B5	STAFF KITCHEN	HALL	CONCEALED DUCTED	FXSQ 20 P	1.8	0.15	TBC	700	550	300	23	26.32	
FCU B6	UTILITY/LAUNDRY	STAFF KITCHEN	VERTICAL CHASSIS	FXNQ 20 P	1.5	0.117	-	930	220	610	19	32.25	

NOTES:  
 1. FANCOIL COOLING DUTY BASED ON 23°C DB, 14°C WB, AIR ON & 30°C OUTSIDE TEMPERATURE.  
 2. AIR VOLUME & SOUND PRESSURE LEVEL BASED ON HIGH FAN SPEED SETTING. ESP IS CALCULATED FIGURE BASED ON HIGH FAN SPEED SETTING. HVAC SUB CONTRACTOR SHALL CHECK ESP FIGURES WHEN DUCTWORK LAYOUT FINALISED & ALLOW TO ADJUST FANCOIL CONTROLS FROM STANDARD TO HIGH STATIC PRESSURE SETTING AS REQUIRED.  
 3. THE HVAC SUB CONTRACTOR SHALL LEAVE CLOSED WITH OCTAGON'S SITE MANAGER TO ENSURE THAT SUITABLY SIZED CEILING ACCESS PANELS ARE PROVIDED FOR FANCOIL UNITS TO ALLOW FILTERS, CONTROLS & PIPEWORK TO BE PROPERLY ACCESSED & SERVICED.



BUILDERS WORK REQUIREMENT IN FC HEADER BEAM ?

MBP comments  
 11.10.12  
 Rev 5236

NOTE:  
 All dimensions must be checked on site and not scaled from this drawing.  
 NOTES & LEGEND:  
 THIS DRAWING SHALL BE READ IN CONJUNCTION WITH THE SPECIFICATION.  
 THE HVAC SUB CONTRACTOR SHALL BE FULLY RESPONSIBLE FOR FINAL SIZING & ROUTING OF ALL REFRIGERANT PIPEWORK IN ACCORDANCE WITH DAIKIN'S REQUIREMENTS & BS EN 378-1:2000.  
 DUCTWORK FABRICATION DRAWINGS SHALL BE SUBMITTED FOR APPROVAL BEFORE INSTALLATION COMMENCES.  
 LEGEND:  
 S/AO SUPPLY AIR DUCT  
 R/AO RETURN AIR DUCT  
 F/AO FRESH AIR DUCT  
 E/AO EXHAUST AIR DUCT  
 S+L REFRIGERANT SUCTION & LIQUID LINE  
 R/B RISE FROM BELOW  
 D/B DROP TO BELOW  
 R/A RISE TO ABOVE  
 D/A DROP FROM ABOVE  
 R/H RISE TO HIGH LEVEL  
 D/L DROP TO LOW LEVEL  
 L/L LOW LEVEL  
 H/L HIGH LEVEL  
 FCU FANCOIL UNIT  
 CU CONDENSING UNIT  
 AHU AIR HANDLING UNIT REF.  
 EF EXTRACT FAN REF.  
 SG SUPPLY GRILLE REF.  
 RG RETURN GRILLE REF.  
 S+L SUPPLY/RETURN AIR GRILLE REF.  
 EG EXTRACT GRILLE REF.  
 TG TRANSFER GRILLE REF.  
 AT ATTENUATOR  
 LV LOUVER (INTAKE/EXHAUST)  
 VCD AIR CIRCULAR VOLUME CONTROL DAMPERS SHALL BE HALTON TYPE PFA RISE WITH LOCKABLE ADJUSTMENT MECHANISM & PRESSURE TAPINGS  
 FD SHUTTER TYPE FIRE DAMPER & ACCESS PANEL

Rev.	Date	MINOR REVISIONS SCHEDULES ADDED
A	SEP 12	
Copyright John stone associates building services consultants <b>jsa</b>		
16 Nelson Road, Whitstable, Kent CT5 1DR Tel. 01227 282213 Fax. 01227 282214		
Client: <b>OCTAGON DEVELOPMENTS LIMITED</b>		
Job Title: <b>CROSSACRES MEADOW ROAD VIRGINIA WATER GU25 4NH</b>		
Drawing Title: <b>BASEMENT PLAN LAYOUT OF HVAC DUCTWORK, REFRIGERANT &amp; CONDENSATE DRAINAGE PIPEWORK</b>		
Scale:	1:50 @ A0	
Date:	AUG 2012	Drawn By: JPS/LMT
Checked:		
Rev. No:		
<b>12.01/M01</b>		<b>A</b>



SCHEDULE OF GRILLES & DIFFUSERS - GROUND FLOOR												
REF.	LOCATION	TYPE	No. OFF	AIR VOLUME (m³/s) EA.	THROW (m)	ΔP Pa	NOISE LEVEL (NR)	DUCT SIZE (mm)		MANUFACTURERS REF.	VCD Y/N	REMARKS
								L	W			
SG G1	KITCHEN/BREAKFAST/DAY	LINEAR BAR GRILLE	1	0.183	3.2	3	<20	1000	200	F15N155/CL	N	
SG G2	KITCHEN/BREAKFAST/DAY	LINEAR BAR GRILLE	1	0.235	3.8	6	<20	1000	200	F15N155/CL	N	AIR VOLUME INC. 0.052m³/s FRESH AIR
SG G3	FAMILY ROOM	LINEAR BAR GRILLE	1	0.17	3.15	5	<20	1000	200	F15N155/CL	N	AIR VOLUME INC. 0.028m³/s FRESH AIR
SG G4	ENTRANCE HALL	LINEAR BAR GRILLE	1	0.183	3.2	3	<20	1000	200	F15N155/CL	N	AIR VOLUME INC. 0.033m³/s FRESH AIR
SG G5	DINING ROOM	LINEAR BAR GRILLE	1	0.147	2.4	2	<20	1000	200	F15N155/CL	N	AIR VOLUME INC. 0.027m³/s FRESH AIR
SG G6	DINING ROOM	LINEAR BAR GRILLE	1	0.12	2.4	3	<20	1000	200	F15N155/CL	N	
SG G7	DINING ROOM	LINEAR BAR GRILLE	1	0.27	4.5	7	<20	1000	200	F15N155/CL	N	
SG G8	DRAWING ROOM	LINEAR BAR GRILLE	1	0.174	3.3	6	<20	1000	200	F15N155/CL	N	AIR VOLUME INC. 0.033m³/s FRESH AIR
SG G9	STUDY	LINEAR BAR GRILLE	1	0.166	3.3	6	<20	1000	200	F15N155/CL	N	AIR VOLUME INC. 0.033m³/s FRESH AIR
SG G10	KITCHEN/BREAKFAST/DAY	LINEAR BAR GRILLE	1	0.183	N/A	4	<20	1000	200	F15N155/CL	N	
SG G11	KITCHEN/BREAKFAST/DAY	LINEAR BAR GRILLE	1	0.183	N/A	3	<20	1000	200	F15N155/CL	N	
SG G12	FAMILY ROOM	LINEAR BAR GRILLE	1	0.133	N/A	6	<20	1000	200	F15N155/CL	N	
SG G13	ENTRANCE HALL	LINEAR BAR GRILLE	1	0.15	N/A	3	<20	1000	200	F15N155/CL	N	
SG G14	DINING ROOM	LINEAR BAR GRILLE	1	0.12	N/A	3	<20	1000	200	F15N155/CL	N	
SG G15	DINING ROOM	LINEAR BAR GRILLE	1	0.12	N/A	3	<20	1000	200	F15N155/CL	N	
SG G16	DINING ROOM	LINEAR BAR GRILLE	1	0.12	N/A	3	<20	1000	200	F15N155/CL	N	
SG G17	DINING ROOM	LINEAR BAR GRILLE	1	0.27	N/A	3	<20	1000	200	F15N155/CL	N	
SG G18	DINING ROOM	LINEAR BAR GRILLE	1	0.12	N/A	3	<20	1000	200	F15N155/CL	N	
SG G19	STUDY	LINEAR BAR GRILLE	1	0.133	N/A	8	<20	1000	200	F15N155/CL	N	
SG G20	KITCHEN/BREAKFAST/DAY	LINEAR BAR GRILLE	1	0.052	N/A	8	<20	1000	50	F15N155/CL/DOR	Y	
SG G21	FAMILY ROOM	LINEAR BAR GRILLE	1	0.019	N/A	8	<20	500	50	F15N155/CL/DOR	Y	
SG G22	WC	LINEAR BAR GRILLE	1	0.033	N/A	8	<20	600	50	F15N155/CL/DOR	Y	
SG G23	DINING ROOM	LINEAR BAR GRILLE	1	0.027	N/A	8	<20	600	50	F15N155/CL/DOR	Y	
SG G24	DINING ROOM	LINEAR BAR GRILLE	1	0.024	N/A	8	<20	1000	50	F15N155/CL/DOR	Y	

- NOTES:
- ALL GRILLES & DIFFUSERS SHALL BE AS MANUFACTURED BY BROOKER AIR SALES.
  - THIS SCHEDULE SHALL BE READ IN CONJUNCTION WITH THE HVAC DRAWINGS & SPECIFICATION.
  - PLENUM BOXES FOR LINEAR DIFFUSERS SHALL INCLUDE THE NUMBER & SIZES OF SPIGOT CONNECTIONS AS INDICATED. ALL SPIGOT CONNECTIONS SHALL BE COMPLETE WITH A CORO OPERATED FLAP DAMPER. GRILLES SHALL BE FITTED WITH OPPOSED FLAP VCD WHERE INDICATED. PLENUM BOXES FOR ALL LINEAR DIFFUSERS & GRILLES SHALL BE PAINTED MATT BLACK INTERNALLY. PLENUM BOX SIZES TO BE CONFIRMED.
  - GRILLES, DIFFUSERS & LOUVERS SHALL BE FINISHED PVC COLOUR TBC. LINEAR DIFFUSERS SHALL HAVE BLACK PATTERNS ADJUSTMENT TUBES.
  - ALL GRILLES & DIFFUSERS SHALL HAVE CONCEALED FIXINGS - SCREW FIXING THROUGH FLANGES WILL NOT BE ACCEPTABLE.
  - THE HVAC SUB CONTRACTOR SHALL NOT USE THIS SCHEDULE FOR ORDERING PURPOSES WITHOUT FIRST CHECKING ALL DIMENSIONS ON SITE.
  - SETTING OUT DIMENSIONS SHALL BE TAKEN FROM THE ARCHITECT'S REFLECTED CEILING PLANS & NOT SCALED FROM THE HVAC DRAWINGS.

NOTE: GRILLE/DIFFUSER SCHEDULE IS INDICATED FOR TENDER PURPOSES ONLY. HVAC SUB CONTRACTOR SHALL NOT PLACE ORDERS UNTIL ALL DETAILS HAVE BEEN CO-ORDINATED WITH THE ARCHITECT & INTERIOR DESIGNER & FINAL INFORMATION IS CONFIRMED BY THE SERVICES CONSULTANT.

SCHEDULE OF DAIKIN VRV FANCOIL UNITS SERVING GROUND FLOOR													
REF.	LOCATION	ROOM SERVED	TYPE	MODEL	COOLING (kW) SEN	m³/s	ESP Pa	NOMINAL DIMS (mm)			APPROX. WEIGHT (kg)	dBA	REMARKS
								L	W	H			
FCU G1	FAMILY ROOM	KITCHEN/BREAKFAST/DAY	VERTICAL CHASSIS	FXHQ 40 P	2.7	0.183	TBC	1070	220	610	23	33.28	
FCU G2	DINING ROOM	KITCHEN/BREAKFAST/DAY	VERTICAL CHASSIS	FXHQ 40 P	2.7	0.183	TBC	1070	220	610	23	33.28	
FCU G3	FAMILY ROOM	FAMILY ROOM	VERTICAL CHASSIS	FXHQ 32 P	2.4	0.133	TBC	1070	220	610	23	32.35	
FCU G4	CLOAKS	ENTRANCE HALL	CONCEALED DUCTED	FXHQ 25 P	1.8	0.15	TBC	700	550	300	23	26.32	
FCU G5	DINING ROOM	DINING ROOM	VERTICAL CHASSIS	FXHQ 25 P	1.8	0.12	TBC	930	220	610	19	32.35	
FCU G6	DINING ROOM	DINING ROOM	VERTICAL CHASSIS	FXHQ 25 P	1.8	0.12	TBC	930	220	610	19	32.35	
FCU G7	STUDY	DRAWING ROOM	VERTICAL CHASSIS	FXHQ 43 P	4.2	0.27	TBC	1350	220	610	27	40.95	
FCU G8	DINING ROOM	DRAWING ROOM	VERTICAL CHASSIS	FXHQ 25 P	1.8	0.12	TBC	930	220	610	19	32.35	
FCU G9	STUDY	STUDY	VERTICAL CHASSIS	FXHQ 32 P	2.4	0.133	TBC	1070	220	610	23	32.35	

- NOTES:
- FANCOIL COOLING DUTY BASED ON 23°C DB, 18°C WB, AIR ON & 30°C OUTSIDE TEMPERATURE.
  - AIR VOLUME & SOUND PRESSURE LEVEL BASED ON HIGH FAN SPEED SETTING. ESP IS CALCULATED FIGURE BASED ON HIGH FAN SPEED SETTING. HVAC SUB CONTRACTOR SHALL CHECK ESP FIGURES WHEN DUCTWORK LAYOUT FINALISED & ALLOW TO ADJUST FANCOIL CONTROLS FROM STANDARD TO HIGH STATIC PRESSURE SETTING AS REQUIRED.
  - THE HVAC SUB CONTRACTOR SHALL LIAISE CLOSELY WITH OCTAGON'S SITE MANAGER TO ENSURE THAT SUITABLY SIZED CEILING ACCESS PANELS ARE PROVIDED FOR CONCEALED DUCTED FANCOIL UNITS TO ALLOW FILTERS, CONTROLS & PIPEWORK TO BE PROPERLY ACCESSED & SERVICED.

NOTE: All dimensions must be checked on site and not scaled from the drawing.

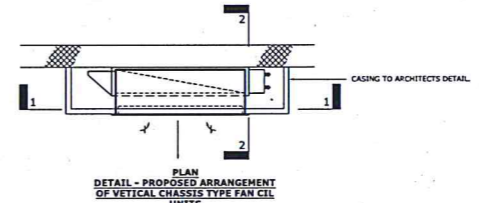
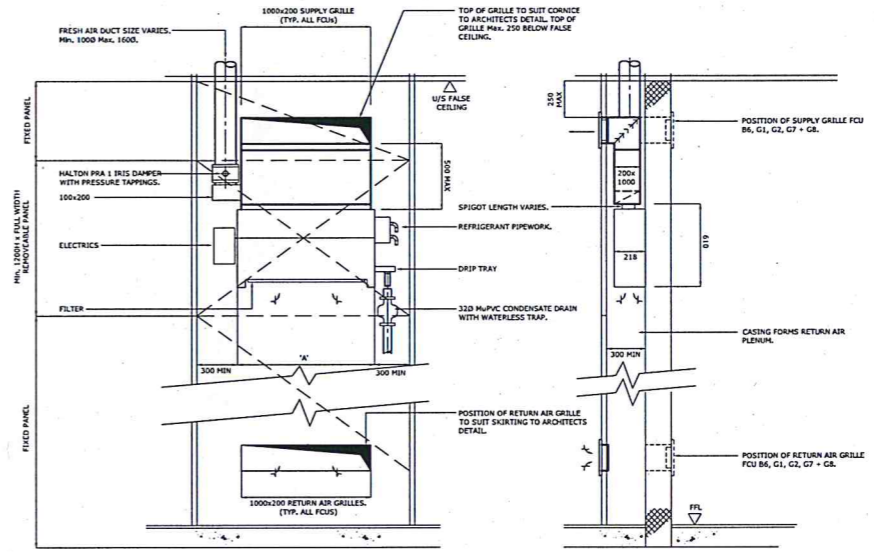
NOTES & LEGEND:

THIS DRAWING SHALL BE READ IN CONJUNCTION WITH THE SPECIFICATION.

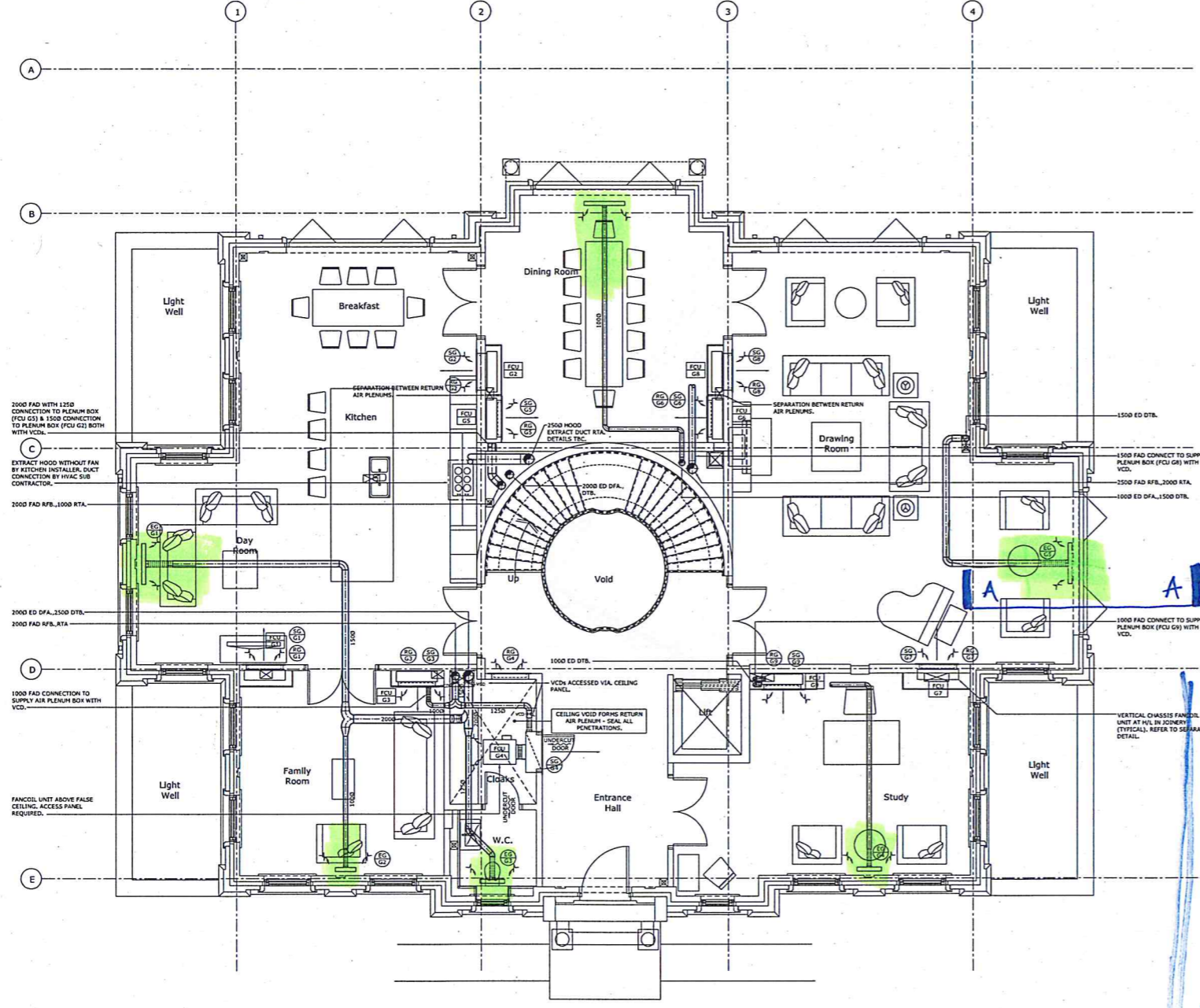
THE HVAC SUB CONTRACTOR SHALL BE FULLY RESPONSIBLE FOR FINAL SETTING & ROUTING OF ALL REFRIGERANT PIPEWORK IN ACCORDANCE WITH DAIKIN'S REQUIREMENTS & BS EN 378-1:2000.

DUCTWORK FABRICATION DRAWINGS SHALL BE SUBMITTED FOR APPROVAL BEFORE INSTALLATION COMMENCES.

- LEGEND:
- SAD SUPPLY AIR DUCT
  - RAD RETURN AIR DUCT
  - FAD FRESH AIR DUCT
  - EDD EXHAUST AIR DUCT
  - RFB REFRIGERANT SUCTION & LIQUID LINES
  - RTB RISE FROM BELOW
  - RTA RISE TO ABOVE
  - RTD DROP FROM ABOVE
  - RTHL RISE TO HIGH LEVEL
  - DTL DROP TO LOW LEVEL
  - LL LOW LEVEL
  - HL HIGH LEVEL
  - FCU FANCOIL UNIT
  - CU CONDENSING UNIT
  - AHU AIR HANDLING UNIT REF.
  - EF EXTRACT FAN REF.
  - SG SUPPLY GRILLE REF.
  - RG RETURN GRILLE REF.
  - SVR SUPPLY/RETURN AIR GRILLE REF.
  - EG EXTRACT GRILLE REF.
  - TRF TRANSFER GRILLE REF.
  - AE ATTENUATOR REF.
  - LOU LOUVER (INTAKE/EXHAUST)
  - VCD ALL CIRCULAR VOLUME CONTROL DAMPERS SHALL BE HALTON TYPE PFA USE WITH LOCKABLE ADJUSTMENT MECHANISM & PRESSURE TAPPINGS
  - FD SHUTTER TYPE FIRE DAMPER & ACCESS PANEL



FCU REF.	MODEL FXHQ	LOCATION	DIM A (mm)
B6	20	UTILITY/LAUNDRY	620
G1 & G2	40	FAMILY ROOM	760
G3	32	FAMILY ROOM	760
G5 & 6	25	DINING ROOM	620
G7	63	STUDY	1040
G8	63	DINING ROOM	620
G9	32	STUDY	760



**BUILT**

**SUSPENDED CEILING**

**INDICATIVE SECTION A-A**

**BUILDERSWORK REQUIREMENT? PLEASE PROVIDE SETTING OUT SIZE AND LEVEL**

**ARCHITECT TO CONFIRM RE BEAM LEVEL**

**MBP COMMENTS 11.10.12 Ref. 5236.**

PRELIMINARY

Rev. Date Revisions.

John Stone Associates  
building services consultants **jsa**

10 Nelson Road,  
Whitstable,  
Kent,  
CT18 1DR  
Tel: 01227 282213  
Fax: 01227 282214

Client: OCTAGON DEVELOPMENTS LIMITED

Job Title: CROSSACRES MEADOW ROAD VIRGINIA WATER GU25 4NH

Drawing Title: GROUND FLOOR PLAN LAYOUT OF HVAC DUCTWORK, REFRIGERANT & CONDENSATE DRAINAGE PIPEWORK

Scale: 1:50 @ A0

Date: AUG 2012 Drawn By: JPS/LMT Checked:

Dwg. No: 12.01/M02 Rev: