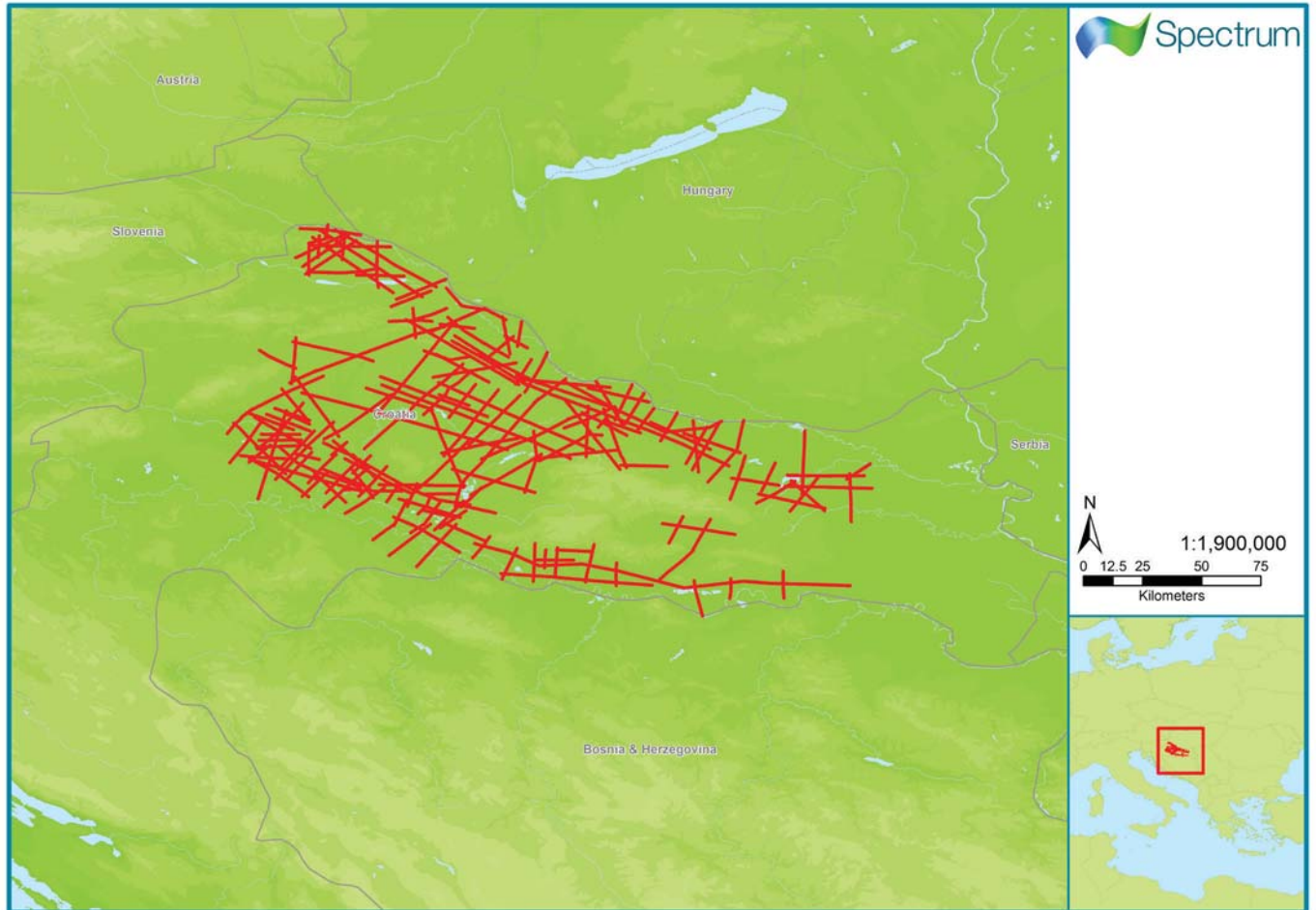


# Onshore Croatia

CROLR-2D14 - Phase 1



Spectrum Multi-Client seismic coverage in RED

Survey Name:	CROLR-2D14 - Phase 1	
Type:	2D Seismic	
Date:	1972-1997	
Survey Size:	3,400 km	
Acquisition Parameters:	Shot Point interval:	30 - 120 m
	Group interval:	15 - 90 m
	Source type:	Vibroseis or Dynamite
	Number of channels:	24 - 240
	Spread layout:	Off-end and split spread layouts
	Nominal fold:	12 - 60
	Record length:	5 - 6 s
Processing Sequence:	Full details of the processing sequence is available on request	
Deliverables:	Final Pre-Stack Time Migration	
	Stacking and Migration Velocities	
	Final Processing Report	
	Shot and Receiver Statics	

For more information please contact Spectrum's Multi-Client teams:

United States  
Spectrum Geo Inc.  
Tel: +1 281 647 0602  
Fax: +1 281 647 0926  
Email: mc-us@spectrumasa.com

United Kingdom  
Spectrum Geo Ltd.  
Tel: +44 1483 730201  
Fax: +44 1483 762620  
Email: mc-uk@spectrumasa.com

Singapore:  
Spectrum Geo Pte Ltd.  
Tel: +65 6827 9773  
Fax: +66 6295 2567  
Email: mc-asia@spectrumasa.com

Australia:  
Spectrum Geo Pty Ltd.  
Tel: +61 8 9322 3700  
Fax: +61 8 9322 1844  
Email: mc-au@spectrumasa.com