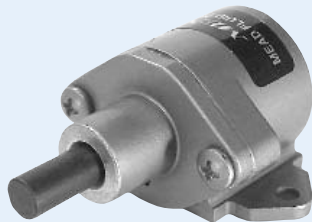
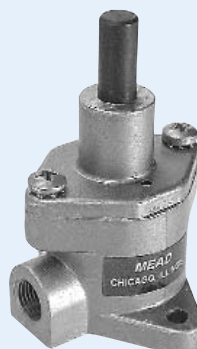


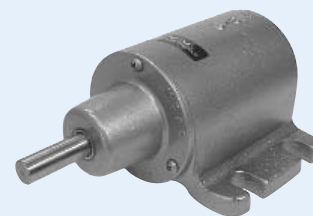
VOX01



H-1



V-1



H-43

Economical single-acting air clamps provide gripping power on the out stroke and spring retraction. They are ideal for use in drill fixtures and for bending, swaging, forming, crimping, & pressing operations. Because 3-way valves may be used, hook-ups are quick and easy.

Adjustable Stroke Models

H0X01, HIX12, V0X01, and VIX12 models are supplied with an adjustable front head so that the user may adjust the length of the stroke by as much as one inch.

Specifications

Pressure : Air to 150 PSI

Temperature: -40°F to +250°F

Rod Material: Nitrotec plated steel on 1 bore models, ground and polished on all others.

Seals: Custom molded one-piece neoprene cups

Body & Cover: Aluminum on adjustable models, cast aluminum on all other models. Cast iron on H-12 and H-283.

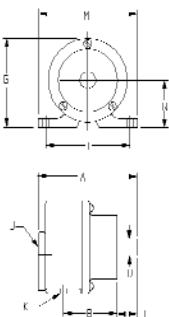
Models	Return♦	Bore(ʳ)	Stroke(ʳ)	Output*
H-1 & V-1	4	1	1 1/16	68
HOX01 & VOX01	5	1	0 to 1	62
HIX12 & VIX12	5	1	1 to 2	61
H-41 & V-41	9	2 1/4	1	361
H-42	10	2 1/4	2	353
H-43	11	2 1/4	3	351
H-71	18	3	1	682
H-72	13	3	2	675
H-73	14	3	3	679
H-12	39	4	2	1206
H-122	27	4	2 5/8	1204
H-283	40	6	3	2763

♦Maximum weight in pounds that spring will return.

*Force in pounds at 100 PSI input pressure with maximum spring resistance.

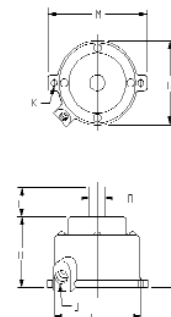
	H-1	HOX-01	HIX-12	H-41	H-71
A	2 29/32	4	5	4 7/8	5 5/16
B	1 11/32	Var.	Var.	2 1/4	2 3/4
C	5/8	Var.	Var.	1 1/2	1 7/16
D	5/16	5/16	5/16	1/2	3/4
G	1 1/4	1 9/16	1 9/16	3 1/16	3 23/32
H	-	-	-	-	-
J	1/8 NPT	1/8 NPT	1/8 NPT	1/8 NPT	1/4 NPT
K	3/16	.200	1/2 Slot	21/64	21/64
L	1 5/8	1 5/8	3 1/2	4 5/8	4 5/8
M	2	2 1/8	4 7/16	5 3/8	5 3/8
Q	5/8	13/16	19/16	1 15/16	1 15/16

Single Side Lug



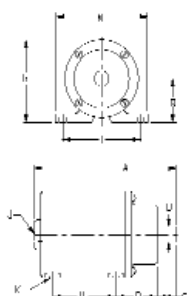
	V-1	VOX-01	VIX-12	V-41
A	2 5/8	3 13/16	4 13/16	4 5/8
B	1 15/16	Var.	Var.	3 3/16
C	1 1/16	Var.	Var.	1 7/16
D	5/16	5/16	5/16	1/2
G	1 9/16	1 3/4	1 3/4	3
H	-	-	-	-
J	1/8 NPT	1/8 NPT	1/8 NPT	1/8 NPT
K	3/16	.200	.200	.257
L	1 11/16	1 5/8	1 5/8	3 3/4
M	2 1/8	2	2	4 1/4
Q	-	-	-	-

Base Mount



	H-43	H-72	H-73	H-12	H-283
A	7 1/4	6 5/16	7 5/16	7	9
B	2 3/4	2 3/16	2 3/16	2 9/16	3 1/2
C	5/8	1 7/16	1 7/16	1 7/16	1 7/16
D	1/2	3/4	3/4	3/4	1 1/4
G	3 1/16	3 11/16	3 11/16	5 1/16	7 1/16
H	2	2 1/16	3 1/16	2 5/16	7 1/16
J	1/8 NPT	1/4 NPT	1/4 NPT	3/8 NPT	1/2 NPT
K	1/2 Slot	21/64	21/64	1/2 Slot	1/2-13
L	4	4 5/8	4 5/8	5 1/2	5 5/8
M	5 1/8	5 1/4	5 1/4	7	6 3/4
Q	1 9/16	1 7/8	1 7/8	2 9/16	3 9/16

Double Side Lug



	H-42	H-122
A	5 13/16	7 9/16
B	2 5/8	2 5/8
C	1 7/16	1 7/16
D	1/2	3/4
G	3 1/16	4 31/32
H	2 Holes	2 1/2
J	1/8 NPT	3/8 NPT
K	1/4-20	5/16-18
L	2 1/4	2 1/4
M	3	4 13/16
Q	1 9/16	2 9/16

Bottom Flush

