

#3 QEV

#1B QEV

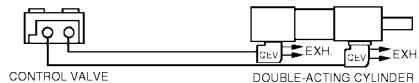
#4 QEV

## Quick Exhaust Valves

Quick exhaust valves (QEV) increase cylinder rod speed by dumping exhaust air directly at the cylinder instead of back through the control valve. Use one QEV in each cylinder port to increase rod speed in both directions.

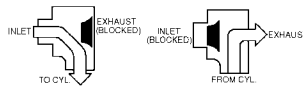
Using a quick exhaust valve to increase cycling speed allows a smaller, less expensive control valve to be used.

## Circuit with Quick Exhaust Valves



## Flow Patterns

#1B and #2B



#4, #5 and #6



## Specifications and Dimensions

Model No.	Port	Cv		Length	Width	Height
#3 QEV	1/8"	.10*	.13‡	1/2"	1/2"	1 13/16"
#1B QEV	1/4"	2.71*	2.83‡	1 3/4"	1 7/8"	2 17/32"
#2B QEV	3/8"	3.13*	3.43‡	1 3/4"	1 7/8"	2 17/32"
#4 QEV	1/2"	3.25*	3.52‡	2.89"	1.02"	2.21"
#5 QEV	3/4"	3.78*	4.08‡	3.43"	1.26"	2.55"
#6 QEV	1"	4.12*	4.40‡	4.26"	3.15"	3.29"



\* Inlet port through cylinder port ‡ Cylinder port through exhaust port

Pressure: 30 - 125 PSI #3 QEV, #1B QEV and #2B QEV

15 - 150 PSI #4 QEV, #5 QEV and #6 QEV