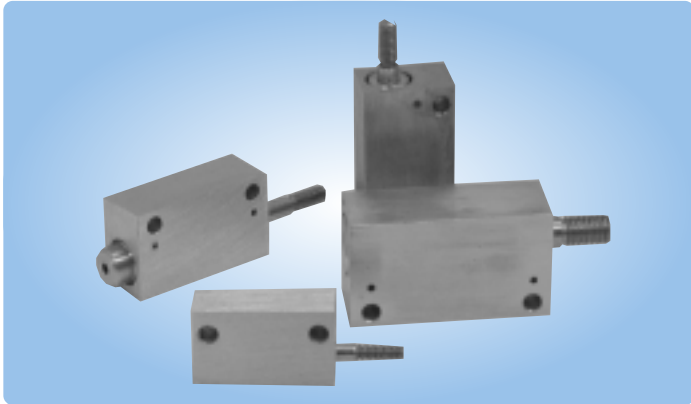


Mini Cylinders Mount Anywhere!

Mead's line of miniature air cylinders offers users a wide range of low-profile linear actuators. These versatile cylinders are available in both single-acting and double-acting models. They are ideal actuators in any application where space is limited.



General Specifications	
Seals:	Buna N (Viton Optional)
Temperature:	Buna N seals = 0°F to 220°F
Viton seals:	0°F to 400°F
Operating Pressure:	to 125 psi
Piston Rods:	Stainless Steel
Rod Bearings:	660 Bronze
Lubrication:	Recommended - non detergent petroleum based
Filtration:	40 Micron

MF Series - Mini Flat Mount Cylinders

Mead's MF Series are miniature, rectangular flat mount cylinders. MF cylinders are available in both single and double-acting models with strokes up to 2".

All ports are tapped 10-32 except the front ports of 1/4" bore models, which have a 6-32 barb fitting. The standard location for the rear extend port is denoted by location "N" on the dimensional drawing. As an option, a rear side port can be ordered special. Contact Mead for details.

Stroke Length Availability - MF Series

This series is available in 1/4" and 1/2" standard stroke lengths.* By adding a spacer, all models are also available in fractional stroke lengths for no additional charge. (Dimensionally the cylinder will be the same as the next closest size up.) If other strokes are required, contact Mead to quote a custom stroke length.

*NOTE: The MF-250 (1/4" bore), Single Acting (SR or SE) is only available in 1/4" standard stroke length.

MF Cylinder Dimensions

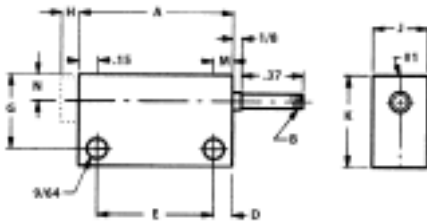


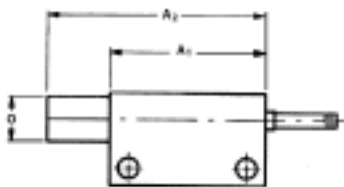
Figure 1: For strokes up to 1/2" # 1 Indicates port locations. The H dimension is for spring extend cylinders only.

When nominal forces are adequate, this table may be helpful.

Typical Spring Forces			
Spring Return		Spring Extend	
250 - 1/4" stroke 14-18 ozs.	250 - 1/4" stroke 25-29 ozs.
375 - 1/4" stroke 22-26 ozs.	375 - 1/4" stroke 30-34 ozs.
375 - 1/2" stroke 22-26 ozs.	375 - 1/2" stroke 54-58 ozs.
500 - 1/4" stroke 42-46 ozs.	500 - 1/4" stroke 62-66 ozs.
500 - 1/2" stroke 51-55 ozs.	500 - 1/2" stroke 78-80 ozs.

Bore	Stroke	A	B	D	E	G	H	I	J	K	M	N	O	Front Port	Rear Port
1/4"	1/4"	1.06	6-32	.12	0.81	7/16"	.10	.31	3/8"	5/8"	.20	.18	5/16"	6-32	10-32
	1/2"	1.31	6-32	.12	1.06	7/16"	-	.31	3/8"	5/8"	.20	.18	5/16"	Barb	Tap
3/8"	1/4"	1.25	8-32	.15	0.93	5/8"	.18	.37	1/2"	3/4"	.37	.25	7/16"	10-32	10-32
	1/2"	1.50	8-32	.15	1.18	5/8"	.18	.37	1/2"	3/4"	.37	.25	7/16"	Tap	Tap
1/2"	1/4"	1.31	1/4-28	.15	1.00	3/4"	-	.37	5/8"	7/8"	.37	.31	9/16"	10-32	10-32
	1/2"	1.56	1/4-28	.15	1.25	3/4"	-	.37	5/8"	7/8"	.37	.31	9/16"	Tap	Tap

Dimensions For Cylinders With Strokes Over 1/2"



Bore	A ₁	A ₂
1/4"	1.06	0.81 + Stroke
3/8"	1.25	1.00 + Stroke
1/2"	1.31	1.06 + Stroke

Figure 2: For Strokes Over 1/2"