

WallpaperWarp Guide



WallpaperWarp is a desktop wallpaper changer for Windows based operating systems. WallpaperWarp allows you to select a folder of images that you would like to be displayed as wallpaper and schedule them to change at predefined intervals.

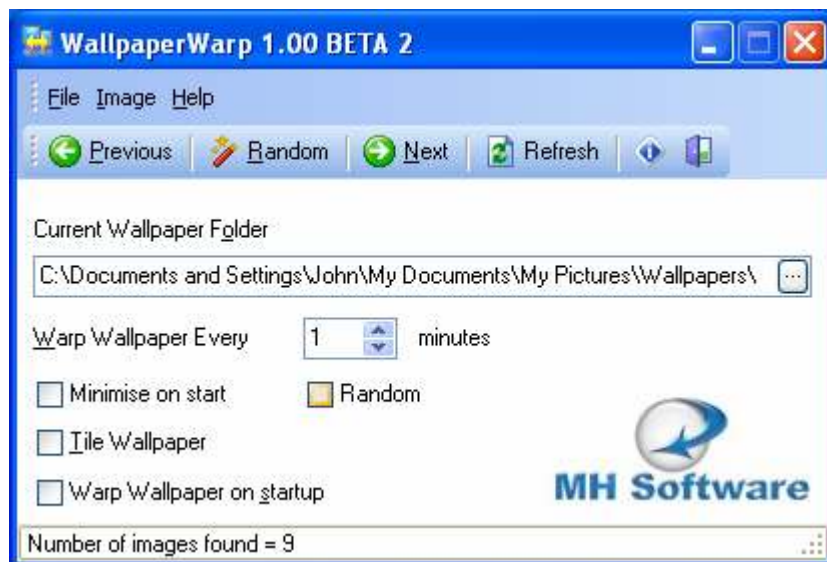
- **Full Microsoft Windows XP look and feel**
- **Selection of wallpaper folder**
- **Ability to go to next and previous wallpaper image**
- **Supports random display of desktop wallpaper images**
- **Define the time your wallpaper 'warps' in minutes**
- **Configurable to launch on startup**

WallpaperWarp has full support to move backwards and forwards through your images, so that you can easily alter your wallpaper to suite your mood. You can even set WallpaperWarp to display a new wallpaper on your PC at startup!

For any support issues please email: support@mhsoftware.co.uk

Installing

To install WallpaperWarp you will need to download the WallpaperWarp installer. Double click the file to begin the installation. Accept the license agreement and simply follow the installer instructions. Select where you would like to install WW and whether you would like to have a desktop shortcut created when prompted. You are now ready to use WW!



To use WW you will need to select the folder containing your wallpaper images. You can either type in the root path or browse to the location. WW supports jpeg images. Once you have selected the folder you are ready to start using WW.

The Controls



By clicking this button the previous wallpaper that was displayed is displayed.



By clicking this button the next wallpaper in your folder is displayed.



The random button does exactly what it says! When pressed the images in your selected folder are displayed as wallpaper in a random order.



This refreshes your current wallpaper display.

- **Current Wallpaper Folder**
To use WW you will need to browse to the folder on your computer displaying your images. Only one folder can be selected so you will need to ensure that this contains all the images that you wish to use as your wallpaper.
- **Minimise on start**
Minimises WW to the system tray on start up.
- **Tile Wallpaper**
Tiles your wallpaper images on the desktop.
- **Warp Wallpaper on start up**
Changes your wallpaper every time that WW is started.
- **Random**
By checking this box WW will remember that you want to display your images in a random order on start up.