



## Stapehill Abbey, Crafts and Gardens

Built for Cistercian nuns nearly 200 years ago, Stapehill Abbey is now a paradise for garden enthusiasts. Throughout the year, award winning gardens amongst 87 acres of parkland present a spectacular array of colour in evocative settings, from the elegant simplicity of the rose garden to the spontaneous beauty of the

cottage garden. There are real havens of tranquillity to be found here - in the peaceful cloister garden tucked away between the Nuns' Chapel and historic Abbey buildings, strolling through the Wisteria or Laburnum walkway, sitting under a rose-covered arbour beside the fountain or watching fish in the pools of the Japanese garden.

This gentle pace is reflected in Stapehill's own countryside museum of bygone rural life and the adjacent home farm, whose animals are popular with all ages. To complete the sense of relaxation, visitors can picnic beside the lake and waterfalls or call in at the licensed coffee shop for light lunches or teas.

Wimborne Road West, Stapehill, Wimborne, Dorset BH21 2RB. Tel: 01202 861616

Open: Apr-Sept, daily, 10.00-17.00; Oct-Mar; Wed-Sun, 10.00-16.00. (Closed Christmas holidays to end of March).

Admission: Adults £7.50, Children £4.50. Concessions.



## WIMBORNE MINSTER AND EAST DORSET

Priests House Garden

Gorgeous countryside, traditional attractions and rural pursuits create just the right mood for enjoying these Dorset gardens. Begin amongst the narrow Georgian streets and hidden courtyards of Wimborne, perhaps visiting the ancient Minster with its Chained Library and Astronomical Clock, or browsing for collectables around the 400 stalls of the Grand Bazaar. From here, explore the lovely open chalklands of the Cranborne Chase Area of Outstanding Natural Beauty or take a riverside ramble along a secluded section of the Stour or Avon Valley Ways. For more ideas of places to visit and things to do, contact:

Wimborne Minster Tourist Information Centre on 01202 886116 or visit [www.visiteastdorset.com](http://www.visiteastdorset.com)



### PLACES TO STAY...

#### BOURNEMOUTH

##### BELVEDERE HOTEL

AA, ETC ★★★

Situated within the heart of floral Bournemouth perfectly located for the town centre, gardens and beaches.

Per person per night: Twin from £46, Double from £46, Family from £52

Bath Road, Bournemouth, Dorset BH1 2EU

Tel: 01202 293336

Fax: 01202 294699

Email: [enquiries@belvedere-hotel.co.uk](mailto:enquiries@belvedere-hotel.co.uk)

[www.belvedere-hotel.co.uk](http://www.belvedere-hotel.co.uk)



#### POOLE

##### HARBOUR HEIGHTS

★★★

Newly refurbished boutique hotel; stunning views across Poole Bay; five minutes drive from Compton Acres.

View from Harbour Heights

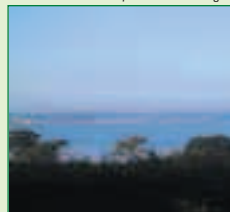
Per person per night: Twin from £115, Double from £115, Family from £130

Haven Road, Sandbanks, Poole, Dorset BH13 7LW

Tel: 01202 707272 Fax: 01202 708594

Email: [enquiries@harbourheights.net](mailto:enquiries@harbourheights.net)

[www.fjbhotels.co.uk](http://www.fjbhotels.co.uk)



#### BOURNEMOUTH

##### CHINE HOTEL

★★★

Victorian Hotel – three acres of mature gardens; ideal base from which to explore the area.

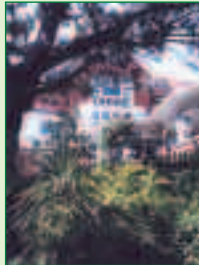
Per person per night: Twin from £55, Double from £55, Family from £55

Boscombe Spa Road, Bournemouth, Dorset BH5 1AX

Tel: 01202 396234 Fax: 01202 391737

Email: [enquiries@chinehotel.co.uk](mailto:enquiries@chinehotel.co.uk)

[www.fjbhotels.co.uk](http://www.fjbhotels.co.uk)



#### WEYMOUTH

##### THE PORTLAND HEIGHTS HOTEL ETC ★★★



Modern, friendly hotel with panoramic views over Chesil Beach, Weymouth and the newly awarded World Heritage Coastline.

B&B from £37.50

DB&B from £57.50

Isle of Portland, Nr Weymouth, Dorset DT5 2EN

Tel: 01305 821361

Fax: 01305 860081

Email: [reception@portlandheights.co.uk](mailto:reception@portlandheights.co.uk)

[www.portlandheights.co.uk](http://www.portlandheights.co.uk)



#### BOURNEMOUTH

##### MARSHAM COURT HOTEL

★★★



Elegant 3 Star hotel. quiet clifftop location/sea views. Winner of "Best Hotel Frontage" last three years.

B&B from £54

DB&B from £66

Russell Cotes Road, East Cliff, Bournemouth, Dorset BH1 3AB

Tel: 01202 552111

Fax: 01202 294744

Email: [reservations@marshamcourt.co.uk](mailto:reservations@marshamcourt.co.uk)

[www.marshamcourt.com](http://www.marshamcourt.com)



The Lodge, Stanbridge