



optiClient 130 V5.0 for HiPath 3000/4000/5000

optiClient 130 – Turning your Notebook into a Telephone.

optiClient 130 V5.0 turns your Notebook or PC into a telephone, making it the center of your multimedia communication with voice, data, e-mail and Web capabilities.

SIEMENS

Global network of innovation

System description

optiClient 130 V5.0 is the latest IP-based communication software for desktop PCs.

As an integral component of the Siemens workpoint family, optiClient 130 V5.0 can run both in the HiPath 4000 V2.0 environment via the HiPath HG 3530 V2.0 gateway and on HiPath 3000/5000 via the HiPath HG 1500 V2.0 (or later) gateway.

The optiClient 130 V5.0 desktop application uses Voice-over-IP and supports the H.323 standard, combining the advantages of enhanced telephony with those of convergence through to IP-based infrastructures. All of the key CorNet IP features are thus available directly on the PC under Windows 2000 and Windows XP.

optiClient 130 V5.0 can be used as a standalone application or in conjunction with a telephone from the optiPoint family and is therefore the product of choice when implementing new, IP-based solutions. optiClient 130 V5.0 is ideal for all mobile customers who simply cannot do without the functionality of the optiPoint office telephone when on the move. In addition, it permits users to integrate corporate directories and personal lists of numbers via LDAP. Rounded off by a highly sophisticated and intuitive user interface, optiClient 130 V5.0 is a constant companion for customers who need to receive and make calls outside their office environment.

Advantages and benefits

- Economic communications solution through use of a shared infrastructure for data and voice
- Protection of investment through gradual introduction of multi-functionality at the workstation
- Increase in efficiency through use of the one user interface – whether in the office or on the move
- One Number concept
Irrespective of location, users retain their own telephone number for incoming and outgoing calls

Features

With optiClient 130 V5.0, mobile PC users can avail themselves of the following functions in the field, at their home office or on business trips.

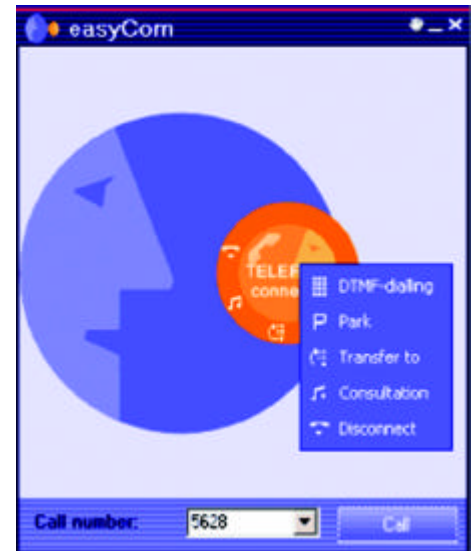
Mobility: Take your direct dial number with you and make calls as usual whether you are using the IP infrastructure in one of your company's branches or dialing into a WLAN hotspot. The desktop-based optiClient 130 V5.0 permits you to extend your PC's wide range of functions to include communications software, allowing you to make calls from your personal extension regardless of your location.



Directory integration: By using the LDAP service, several corporate and personal directories can be integrated into optiClient 130 V5.0. Even without connecting to the main directory server, you have constant access to your list of contacts.



User-friendliness: With its attractive look and feel, the intuitive easyCom communications interface makes telephony functions such as consultation hold, toggling and conference child's play. All you have to do is drag and drop!



Other features

- Modular user interface that can be tailored to suit the needs of the individual user
- Enhanced telephony functions such as an extended keypad
- Ideal solution for mobile employees – users always retain their internal phone number irrespective of their location
- Individual access rights and other parameters are retained, such as initiated call forwarding, do-not-disturb
- TAPI support: TAPI 2.0 (1st party TAPI) driver for dialing from standard TAPI PC applications
- Quality of Service support (802.1p)
- Voice compression: G.711, G.723 and G.729
- Optional special screen saver that signals the telephone number and allows direct pickup of calls
- Keypad dialing, corporate address book, other LDAP address books, missed calls lists, drag and drop or copy and paste

User interface

The user interface consists primarily of a main toolbar that can be placed anywhere on the desktop. It contains a selection of dialog boxes, which allow users to select telephony functions and identify the call state. The following modules are also available to the mobile optiClient 130 V5.0 user:



All of the modules in the optiClient 130 V5.0 application can be dragged from the main toolbar and placed anywhere on the desktop.

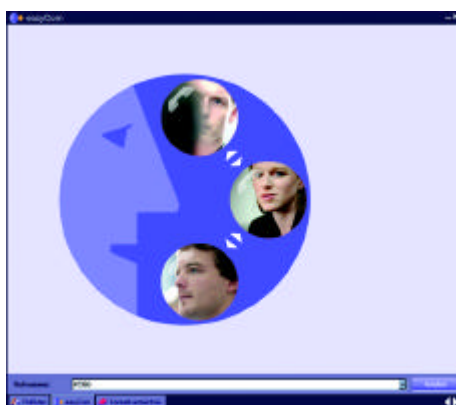
Enhanced optiClient 130 keypad

Users can extend the keypad to include additional programmable function keys such as direct dial, call pickup or call park.



optiClient 130 easyCom

The new easyCom interface provides a visual representation of the communication procedure. Users are in the center of the communications circle. Other users, represented as small communications circles, can simply be dragged into this communications circle using the mouse. To further personalize the interface, images of the users can be stored in the telephone book, which are then displayed for incoming/outgoing calls.



optiClient 130 Web Browser Module

optiClient 130 V5.0 provides a web browser window where web sites that are used frequently on a daily basis can be quickly opened without having to leave optiClient 130. The optiClient 130 web browser window provides basic operator functions. The web sites that can be accessed in the web browser are configured in optiClient 130.



optiClient 130 Integration of Corporate Directory/Contact List

You need to access your corporate address book while on the move? No problem. The LDAP service allows you to simply integrate your corporate directory into optiClient 130 V5.0.

You can administer individual and personal contacts in your contact directory.

What's more, individual contacts can be taken from various directories and incorporated into a contact list where they can be grouped according to specific requirements. The connection is established directly from the directory regardless of where your contact is stored.



Our strengths - Your advantages

Siemens is known worldwide as a trailblazer in the advancement of information and communication technologies. No other company offers such a comprehensive and innovative product portfolio.

Regardless of which communication technology you are using today – or want to use tomorrow – Siemens offers you the right solution.

www.siemens.com/hipath

Technical data

System requirements

- HiPath 4000 V2.0 with HiPath HG 3530 V2.0
- HiPath 3000 V4.0 (SMR 11 or higher) with HiPath HG 1500 V2.0 (SMR 29 or higher) or HiPath HG 1500 V3.0 (SMR 5 or higher)
- HiPath 3000/5000 V5.0 with HG 1500 V3.0

PC requirements

- Operating system: Windows 2000 (SP4 or higher) or Windows XP (SP1 or higher)
- 1 GHz or higher processor (recommended)
- 512 MB RAM or higher (recommended)
- At least 150 MB free memory on the hard disk
- CD ROM drive
- Ethernet network card
For Quality of Service (QoS) function with 802.1p support
- USB support for connecting a handset or headset

Network/QoS

- Switched network, all components with IEEE 802.1p/q capability

Available languages

German, English, French, Dutch, Italian, Portuguese and Spanish

© Siemens AG 02/2005
Siemens Communications • Hofmannstr. 51 • D-81359 Munich

Reference No.: **A31002-A2000-B400-1-7629**

The information provided in this document contains merely general descriptions or characteristics of performance which in case of actual use do not always apply as described or which may change as a result of further development of the products. An obligation to provide the respective characteristics shall only exist if expressly agreed in the terms of contract. The trademarks used are owned by Siemens AG or their respective owners. Availability and technical specifications are subject to change without notice.