



**Corian®**

DuPont™ Corian®: the obvious solution for today's healthcare challenges



[www.corian.co.uk](http://www.corian.co.uk)  
[www.corian.com](http://www.corian.com)

**corian.**





## DuPont: the full spectrum approach to healthcare facilities

### In this brochure

DuPont: the full spectrum approach to healthcare facilities	2
Discover the DuPont™ Corian® surface solutions for healthcare	3
When helping to prevent the spread of infection, the surface matters	4
DuPont™ Corian®: the ideal surface for healthcare environments	5
A walk through the hospital	6
DuPont™ Corian® is your ultimate ally in preventing contaminations	8
DuPont™ Corian® for patient comfort	10
Healing colours for kids	11
Thermoforming	11
DuPont™ Corian® is the Safe Choice	12
DuPont™ Corian®: protective, versatile and resilient	13
DuPont™ Corian® for heavy use and for many years to come	14
Our network ensures quality and service	14
On the edge of creativity	15

At DuPont, our goal is simple : to create sustainable solutions that offer a better, safer and healthier life for people everywhere. In addition to innovative surfaces for healthcare environments, we can also help you determine the best materials for other aspects of the facility.

From high-performance building materials to the ingredients that power critical systems such as fire suppression, air and liquid filtration and air conditioning, DuPont products help lead the way in creating more energy-efficient and sustainable buildings. DuPont also pioneered the technology for products that are used throughout the world to provide greater protection for patients and healthcare workers including protective apparel, patient drapes and sterile packaging for medical devices.

#### Protection on the outside

Innovative DuPont™ Tyvek® breather membranes help protect buildings from water and air intrusion for increased energy efficiency.

#### Protection on the inside

A significant part of delivering positive patient outcomes is the prevention of hospital acquired infections. In addition to Corian®, DuPont offers a broad range of solutions to help protect against the spread of infection in healthcare facilities, including DuPont™ RelyOn™ antiseptic and disinfectant solutions; DuPont™ Softesse® and DuPont™ Suprel® - protective medical gowns and drapes; and DuPont™ Tyvek® protective material for sterile medical device packaging.

## Discover the DuPont™ Corian® surface solutions for healthcare

For more than 40 years, DuPont scientists and engineers have created beautiful, enduring surface materials that captivate the imagination. A true innovation in technology, DuPont™ Corian® pioneered the science behind solid surfaces - spurring an entire industry. Today, we continue to push the limits of technology and design to deliver even more stunning effects, such as surfaces with enhanced translucency and thermoforming techniques to make it more feasible to bring your visions to life.



DuPont offers a wide variety of solutions for today's healthcare facilities

#### DuPont™ Photovoltaic Solutions

Solar energy technology for commercial applications  
[www.photovoltaics.DuPont.com](http://www.photovoltaics.DuPont.com)



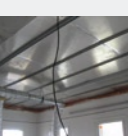
#### DuPont™ Tyvek® Breather Membranes

Protective barriers for more energy-efficient buildings  
[www.construction.tyvek.com](http://www.construction.tyvek.com)



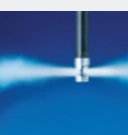
#### DuPont™ Energain®

Energy-saving thermal mass systems  
[www.energain.dupont.com](http://www.energain.dupont.com)



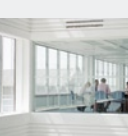
#### DuPont Fire Extinguishants

Clean agent fire suppression systems  
[www.cleanagents.DuPont.com](http://www.cleanagents.DuPont.com)



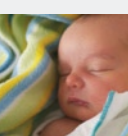
#### DuPont Refrigerants

Air conditioning and medical refrigeration solutions  
[www.refrigerants.DuPont.com](http://www.refrigerants.DuPont.com)



#### DuPont Filtration Solutions

High-performance air and liquid filtration systems  
[www.FiltrationSolutions.DuPont.com](http://www.FiltrationSolutions.DuPont.com)



#### DuPont™ Sorona® Polymer

Key ingredient in renewably sourced fabrics and carpeting  
[www.sorona.dupont.com](http://www.sorona.dupont.com)



#### DuPont Medical Fabrics

Protective gowns and drapes with superior comfort  
[www.medicalfabrics.dupont.com](http://www.medicalfabrics.dupont.com)



#### DuPont Medical Packaging

Sterile packaging for medical instruments and devices  
[www.MedicalPackaging.DuPont.com](http://www.MedicalPackaging.DuPont.com)



#### DuPont™ AudioComfort™

Acoustic panels  
 Sound control systems and materials  
[www.acoustics.DuPont.com](http://www.acoustics.DuPont.com)



#### DuPont Personal Protection

Protective apparel for chem/bio agents  
[www.dpp-europe.com](http://www.dpp-europe.com)



#### DuPont™ RelyOn™ Disinfectant Sprays and Wipes

Easy-to-use surface disinfectants  
[www.PersonalProtection.DuPont.com](http://www.PersonalProtection.DuPont.com)



#### DuPont™ RelyOn™ Hand Antiseptic Products

Effective antiseptic cleansers  
[www.PersonalProtection.DuPont.com](http://www.PersonalProtection.DuPont.com)





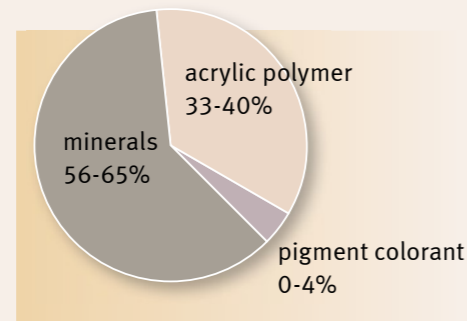
# When helping to prevent the spread of infection, the surface matters

Every year too many patients contract hospital acquired infections during a hospital stay. But clean, sanitary surfaces can help to prevent the spread of infection. DuPont™ Corian® is a non-porous surface that, when properly cleaned, does not support the growth of mould, mildew and bacteria and therefore helps to reduce the spread of infection.



## The surface that works virtually everywhere

DuPont™ Corian® can be used for reception counters, patient bathrooms, operating room walls, food serving and preparation counters and even lab countertops. And because it can be thermoformed, shaped, carved and routed, it's the surface that conforms to your imagination.



### A completely solid composite material throughout.

The non-porous composition of Corian® makes it easier to clean and provides long-lasting durability. Made from alumina trihydrate in an acrylic polymer matrix, it can be thermoformed, inconspicuously seamed and easily disinfected - making it an ideal material for a variety of healthcare environments.

### Superior durability for high-use applications

Corian® is heat- and stain-resistant, so it stays looking like new even in tough healthcare environments. Corian® is also easy to renew and repair. If it's scratched or scorched, marks can be removed with a mild abrasive or sandpaper.

And its surface is solid throughout, so there's no laminate to lift or peel. Corian® retains its beautiful appearance longer - so a healthcare facility can realise an even greater return on its investment.

### Meet and exceed commercial and healthcare standards

DuPont™ Corian® can help you ensure that your designs meet critical industry standards. DuPont surfaces products are GREENGUARD Indoor Air Quality Certified. Corian® has also received LGA certification for its hygienic properties.

In an effort to better protect the health of patients and staff, as well as reduce the environmental footprint of facilities, today's healthcare design and construction professionals are focused on "green" design practices. Key voluntary guidelines such as the Green Guide for Health Care™ (GGHC) and the Leadership in Energy and Environmental Design (LEED®) Green Building Rating System™ are emerging as critical tools for evaluating the sustainability of buildings.

**GGHC credits** The GGHC is a voluntary, self-certifying best practices green building tool kit specifically customized for buildings that are predominantly institutional occupancies, as defined by local building codes—such as hospitals, medical office buildings and clinics. The GGHC recognizes a full range of construction, operations and maintenance activities associated with the healthcare sector.



# DuPont™ Corian®: the ideal surface for healthcare environments

Busy healthcare professionals need to be able to concentrate on patient care, with confidence that their working environment meets the highest standards, not just in performance, but also in aesthetics. A clean, hygienic, fresh and relaxing environment can help clinicians do what they do best and enhance patient recovery. DuPont™ Corian® meets all the requirements of a hardworking surface for healthcare, while also offering a decorative appeal and a versatility in design that makes it suitable for any scheme.

### 1. Ease of maintenance

As a solid, non-porous surface, Corian® can be maintained with minimum care to retain its original appearance. Because it can be renewed, Corian® will still look and perform like a new installation after many years of use, while other surfacing materials

will often need to be replaced. With proper care, Corian® will stay looking like new for years.

### 2. With proper cleaning, does not support microbial growth

DuPont™ Corian® is a completely solid surface that does not support microbial growth when properly cleaned. Corian® has been listed by GreenGuard for being microbially resistant when tested according to a test method following the guidelines of ASTM D 6329 and analyzed with a quantitative scale. In addition, because Corian® joints and seams form a molecular bond that creates a virtually seamless surface, there are no cracks or voids for dirt to infiltrate.

**Fungus resistance** An independent laboratory inoculated a sample of Corian® with spores of five common fungi, then placed it in a chamber providing ideal conditions for fungal growth. After 21 days, DuPont™ Corian® showed no growth of the test fungi, control samples of other surface materials showed moderate to heavy growth.

**Sanitization** Corian® is tough enough to withstand the chemical agents used to reduce Staphylococcus aureus and a variety of virulent strains of bacterial contamination by 99.99% in one minute.

### 3. Smooth, non-porous

Corian® is a non-porous surface, which allows for easier cleaning, disinfecting and decontamination to help reduce cross-contamination risks that can lead to the spread of hospital acquired infections.

### 4. Inconspicuous seams

Proper joining is the most important phase of fabrication and installation. DuPont™ Joint Adhesive is a two-component adhesive that forms a "hard seam" that bonds Corian® together, resulting in inconspicuous seams and a smooth, continuous surface. There are no grooves or grout lines to trap moisture that can lead to the growth of mould and mildew.

### 5. Solutions made to measure

DuPont™ Corian® offers an inherent formability that means it can be applied to almost any situation and solve any number of design challenges. Completely bespoke and fabricated by skilled craftsmen, Corian® can achieve all kinds of shapes and sizes, it can have a vast array of edge details, can be used vertically or horizontally, offers a colour palette of 100 choices and an also receive patterns and images via digital carving or sublimation printing.



**Completely solid and absolutely non-porous | nothing gets under the skin of hygienic, stain-resistant Corian®, which is suitable for a vast array of applications from sinks to waste containers. | UCI Orange**

**As stylish as stone, workable like wood | Corian® means the best of both worlds when it comes to surfaces. Its fissure-free homogeneity gives it the quality of materials like metals, its aesthetics rival the noble stones, while its extraordinary workability means that Corian® can do anything wood can do...and so much more. | UCI Orange**





# A walk through the hospital

The unique solid structure of DuPont™ Corian® makes it an ideal choice in a wide variety of healthcare settings. Not only does it look beautiful, it is non-porous and does not support microbial growth when cleaned properly. Corian® is low-maintenance, durable and easy to decontaminate - key performance qualities that help ensure surfaces retain their value over time.



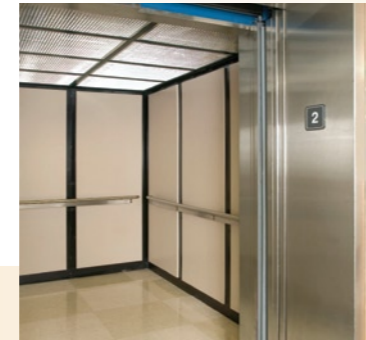
## 1 Main lobby and Admissions

As the first point of contact for patients and families, DuPont™ Corian® can help create an inviting look in lobby and reception areas. With a wide variety of colours and textures to choose from, Corian® delivers superior durability for high traffic areas.



## 2 Corridors

Corian® offers a highly durable surface that can withstand frequent contact with beds, wheelchairs and medical equipment during patient transport. Whether used for wall protection or wall panels, it helps to create unique transitions for corridors that are both durable and aesthetically pleasing.



## 3 Public Cloakrooms

As healthcare facilities move toward hospitality inspired design, Corian® offers a unique combination of beauty and durability. With a non-porous surface that's both easy to clean and renew, Corian® is an ideal choice for sinks, vanities, countertops and toilet partitions. It's also easy to combine with other materials to create great designs for a premium, high-quality aesthetic that may help boost patient confidence and help improve workplace satisfaction for staff.



## 4 Cafeteria and food services

In addition to helping create beautiful, restaurant inspired settings, DuPont™ Corian® can be easily shaped and thermoformed to create unique countertop, tray slide, silverware holder and hotplate areas; designs with significantly less maintenance than natural stone or other materials.



## 5 Operating rooms

Whether used for wall cladding, counters or wash sinks for operating room personnel, DuPont™ Corian® delivers maximum design versatility in a non-porous surface that's easy to clean and resists stains common to operating rooms such as blood, betadine and Gentian's violet. Thermoforming unique sink shapes helps create better access to the wash areas for both pre- and post-operation cleaning procedures.



## 6 Exterior cladding

The superior durability of Corian® withstands weather, creating rich, dramatic exterior facades that require less maintenance than other surfaces. Tough and long lasting, Corian® holds up under temperature extremes, and passes ANSI Z 124.3 test for colour fastness with its superior resistance to UV exposure.

## 7 Patient rooms

In patient rooms, DuPont™ Corian® delivers style and superior durability for bathroom basins, vanities, shower partitions, counters, bed tray tables, window ledges and desks. With a wide variety of colours and textures, Corian® makes it easy to achieve an aesthetically pleasing design that also gives patients confidence in cleanliness and attention to their care and well-being. Corian® can also be used for mobile computer stations and patient bed headboards, with integrated technology for TV hookups, electrical plugs, oxygen systems and more.



## 8 Nurses' stations

The design flexibility of Corian® makes it easy to design nurses' stations that are organised and functional, as well as beautiful. Corian® can be shaped and thermoformed to create multiple workspaces at one station, and comes in a wide variety of colours that can be combined to form unique patterns and inlays. This helps increase visual interest in areas that are frequented by patients and creates an inviting space for healthcare staff. Computers and other technology can be integrated directly into Corian® and its durable non-porous surface makes it easy to remove everyday stains like permanent marker.



## 9 Neonatal and pediatrics

DuPont™ Corian® comes in many fun and bright colours to help stimulate early childhood development and create a welcoming environment. It can also be thermoformed into unique shapes to create "larger than life" pediatrics play areas. With superior durability, Corian® is also easy to clean and can stand up to the everyday demands of pediatrics areas, while also featuring inconspicuous seams that help prevent trapped dirt which may prevent the harboring of mould, mildew and bacteria. This sleek finish makes cleaning easy and helps to reduce the spread of infection. This is especially important for vulnerable patients.



## 10 Testing areas and labs

DuPont™ Corian® can be easily shaped and thermoformed to create virtually endless options for organisation, storage and utility sinks in lab and testing areas. The continuous non-porous surface can stand up to chemicals without deteriorating, and it can resist stains from common lab agents including blood, plasma, Wright's stain and X-ray developer. Functionally seamless surfaces prevent dirt becoming trapped which may harbor mould, mildew and bacteria - not only helps protect laboratory workers, but can also help protect the integrity of testing by helping reduce the risk of potential sample contamination.



# DuPont™ Corian® is your ultimate ally in preventing contaminations

Whether in the operating theatre, X-ray room, laboratory or patient bathroom, hygiene is of paramount importance. The advantages of a material that allows you to create almost anything - from one-piece seamless installations to grout-free wall-cladding and from hard-working countertops with renewable surfaces to stylish, easy-clean reception desks - cannot be overstated.

## Stain resistance and decontamination

DuPont™ Corian® delivers superior stain resistance. In addition, Corian® can be easily cleaned of excessive levels of radioactive contamination.

## Nuclear medicine environments

In laboratory tests, surfaces of Corian® contaminated with <sup>14</sup>C, <sup>3</sup>H, <sup>35</sup>S and <sup>32</sup>P radioisotopes were decontaminated to "unrestricted" levels using a Scotch-Brite™ abrasive pad and an approved radioactive decontaminant product. Repeated contamination/decontamination cycles were equally effective.

## X-ray environments

Gentle sanding with fine sandpaper followed by treatment with an approved radioactive decontaminant product effectively reduces radioactive contamination to "unrestricted" levels in X-ray environments. Following this process, the contamination is reduced to below tolerance levels required for "free access" zones that do not require protective equipment. Corian® installations show no visual signs of discolouration or delamination like other materials do in X-ray environments. DuPont™ Corian® does not provide protection from Gamma Rays: in areas of high exposure to x-ray activity, Corian® should be used for decorative and hygienic purposes.

## Effective cleansing of HIV

DuPont™ Corian® solid surface is a non-porous material that can be cleansed easily of the human immunodeficiency virus (HIV). Tests performed by the DuPont Applied Biotechnology Group show that high concentrations of HIV can be removed from the surface of Corian® by rinsing with a diluted solution of household bleach. A 10% solution of common bleach (0.5% sodium hypochlorite) killed all infectious HIV contamination on Corian®.

## Reduction of cross-contamination

Corian® solid surfaces are non-porous and with proper cleaning can help reduce the possibility of cross-contamination in all high-use areas. Because they are non-porous and lack open joints, DuPont™ Corian® solid surfaces, when properly cleaned, do not promote the growth of mould or mildew and are easy to clean and disinfect using industry standard solutions such as DuPont™ RelyOn® disinfectants.



**No compromise** | The thermoformability of Corian® allows us to thermoform the material into all kinds of shapes. In this way we can produce washbasins without any joints, thus assuring easy-maintenance and absolute hygiene. | *Corian® Washbasin*



**Wall Cladding** | Corian® comes in large sheets which means generous areas of wall can be clad with a surface that will not harbour bacteria, is easy to maintain, and can even be 'invisibly' spot-repaired if necessary. | *Polish project*



**Hygiene in good shape** | One-piece, flowing-free and resistant to unwelcome contaminants, this pleasingly colourful scrub room washbasin helps to keep hospital hygiene in great shape. | *Corian® Hospital*

**Spotless Hygiene** | Cleanliness can also be ultra sleek and stylish. The versatility of Corian® means aesthetics do not have to be sacrificed to functionality. | *Dental practice Benguigi*



**Working hard** | A workstation should be a place of inspiration as well as confidence. Corian® can not only solve your design challenges but also bring peace of mind in terms of pristine conditions. | *Kajetany*



**Full integration of instruments** | Corian® works well as part of a dream-team. Ultra-adaptable it can be easily integrated with all kinds of other materials and technologies for optimum conditions. | *Corian® Hospital wall with integrated technology*



# DuPont™ Corian® for patient comfort

The private facilities of patient care are equally important and should offer both practicality and a pleasing ambience. DuPont™ Corian® answers the dual need for easy-care functionality and an environment that's comforting to be in. Sleek, warm and silky smooth to the touch, Corian® not only resists stains, marks and mildew - it's also easy on the eye and a pleasure to live with.



**Welcoming cleanliness** | A patient bathing area should not only be practical, but also fresh, appealing and calming. Stress-free for carers, cleaners and residents, Corian® makes a better bathroom. | *Corian® Cameo White*

**Shape up to new perspectives** | Form follows function, but can also make a space more 'live-able.' The ability to translate vision into reality with Corian® opens doors to improved ergonomics and practical comfort. | *Corian® Cameo White*



## Healing colours for kids

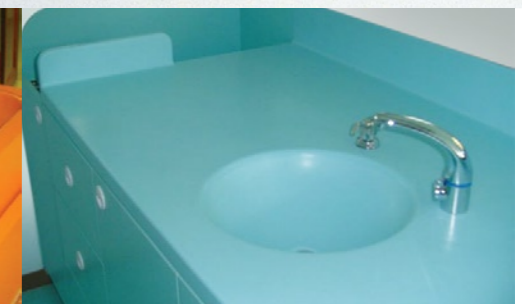
The DuPont™ Corian® colour palette is the result of careful and intensive research and development and includes hues inspired by elements of nature - earth, water, air, metal, wood and fire. Many of the 100 colours in the palette are beautifully suited to healthcare environments as they offer either soothing, and calming tones to aid relaxation or alternatively, refreshing and energising hues; from soft tone-on-tone textures to reflective surfaces. This well-rounded palette provides colours that support the function and aesthetics of every space in the healthcare environment.

Beyond the extensive colour choice for DuPont™ Corian® there is a wealth of further design possibilities. For example, sublimation printing technology means that any digital image can be permanently transferred under the surface of Corian® to create a unique 'wallpaper' that is washable and will not peel.

**Colours create atmosphere** | There is gentleness in strength...Corian® makes a super-tough yet cheerful wall-covering and through printing technology, could even mimic the kind of mural shown here. | *Polish project*



**Curves are friendlier** | It's not just kids that appreciate organic shapes, the ergonomic benefits of sensuous forms in appealing shades make everyone feel more at home. | *Crèche bd Menilmontant Paris*



## Thermoforming

What makes Corian® such an innovative material is that it is thermoformable and can be manipulated in creative ways that are limited only by your imagination.

Because Corian® is an acrylic-based material, it can be thermoformed in a variety of ways using either wood, synthetic or metal moulds at controlled temperatures. Design techniques using thermoforming differ, depending on the aesthetics desired. Corian® is a rare material that appears hard, but feels like soft leather or rubber while heated. Forms or objects can be wrapped with the softened Corian® creating interesting sculptured shapes. DuPont™ Corian® can be easily shaped by hydraulic presses or vacuum tables. This allows you to design an endless variety of shapes and forms - from single-piece basin and vanity units to laboratory countertops with coved splashbacks and from shapely reception desks to interior cladding and even curved walls. There are a variety of techniques to minimise costs.

**Shapes without limits** | If you can imagine it, Corian® can probably give form to it, while also performing to the standards you would expect of the 'benchmark' for countertops. | *Crèche bd Menilmontant Paris*







## DuPont™ Corian® is the Safe Choice

It is never worth compromising on peace of mind and performance. The wise choice is to invest in safety, hygiene, durability and resistance - and in materials, equipment and suppliers that you know will do the job...and keep on doing it for the long term. DuPont™ Corian® is a product you can count on.

### Flammability—Class I fire rating or better

DuPont™ Corian® solid surface sheet has been evaluated in accordance with ANSI/UL Standard 723 "Test for Surface Burning Characteristics of Building Materials" (ASTM E84) by Underwriters Laboratories, Inc. (see chart below).

### Surface comparison—fire rating typical results

physical properties	Corian®	acrylic/ polyester blend	polyester	fire rated high-pressure laminates with wood board	engineered stone
Flammability Class Rating (ASTM E84/UL 723)	Class 1 Class A	Class 1 Class A	Not classifiable if SDI>450	Class 1 Class A	Class 1 Class A
Flame spread index	<25	<25	<25	<25	<5
Smoke development index	<25	<250	>500	<100	<75

Flammability ratings are brand specific. Flammability may be impacted by individual product formulation. Natural stone is nonflammable.

### Durable

Due to its composition, Corian® is tough and long-lasting, performing well in both abrasion and impact tests.

### Surface comparison—durability typical results

physical properties	test method	Corian®	acrylic/ polyester blend	polyester	fire rated high- pressure laminates	engineered stone
Gardner Impact (in-lbs)	ASTM 3029	100-120	60-70	20-30	not available	40-60
Abrasion resistance	—	very good	very good	very good	fair	excellent
Tensile strength (psi)	ASTM D638	6000	5000	4000	not available	8000
Fluxural strength (psi)	ASTM D790	10000	9000	8000	not available	8000
Fluxural Modulus (psi)	ASTM D790	1.4 x 10 <sup>6</sup>	1.3 x 10 <sup>6</sup>	1.2 x 10 <sup>6</sup>	not available	5.1 x 10 <sup>6</sup>
Elongation (fluxural strain @ break)	ASTM D638	0.9%	0.6%	0.4%	not available	0.1%

Products in each category are solid colours which generally have a gauge of approximately Vs", a filler loading >55% ATH and are not translucent in appearance.



**Scrubbing up beautifully |** When human health is at stake, everything needs to be fit for purpose. A curvaceous yet tough wash area made from Corian® stands for confidence in cleanliness. | *Corian® Hospital*

## DuPont™ Corian®: protective, versatile and resilient

DuPont™ Corian® delivers superior stain resistance over laminated surfaces or stone. Because Corian® can be renewed by scrubbing or sanding, most common healthcare stains can be easily removed.

An evaluation of the stain resistance properties of DuPont™ Corian® based on ANSI/ICPA SS-1-2001 Section 6.2 was conducted by the DuPont Building Innovations Research and Development Center. Several drops of each staining agent commonly found in healthcare facilities were placed on the surface of Corian® Cameo White then left for 72 hours. The Corian® solid surface was easily cleaned using a soft cloth and non-abrasive cleanser. No stains were visible on the cleaned surface.

Before
After

-  blood
-  betadine
-  rust
-  spent X-ray developer fluid
-  Gentian's violet
-  Wright's stain
-  nail polish
-  black permanent marker



# DuPont™ Corian® for heavy use and for many years to come

Whether serving as a welcoming reception desk to make patients feel at ease - or working hard as a heavily-used countertop, Corian® keeps looking its best. Easy to maintain, it will not peel or stain and any accidental nicks or scratches can easily be removed.

Should any serious damage occur, Corian® can usually be fully repaired on site and so, unlike many other materials, will not need to be regularly replaced - or lived with when it's past its prime. Because we have faith in our product (and many installations that are over 40 years old still look great today) we offer a meaningful warranty and ensure our customers get the quality and service they would expect of the original and leading solid surface.



## Our network ensures quality and service

DuPont is a name you can depend on for quality and our commitment to our customers does not end with a sale. DuPont has a large network of trained and certified professionals to ensure that installation/fabrication goes smoothly so that end-customers are completely satisfied with their purchase - whether for residential or commercial applications.

### Customer satisfaction above all

DuPont has developed a Quality Network for fabricators who are dedicated to delivering the very best standards for installation and service. Their primary goal and approach is to ensure that customers are highly satisfied with their DuPont™ Corian® installations.

### A network of professionals

Members of the Quality Network are committed to ensuring that customers receive the highest quality product and service from ALL the companies in the supply chain. Its members are Certified Fabricators and Service Centres. Quality Network Service Centres are approved by DuPont for professional sanding and expert repair work. They can also handle installation work and offer maintenance contracts to commercial customers to ensure that their Corian® installation stays in prime condition.

A Corian® Quality Network logo has been created to support our brand and to emphasize our quality guarantee.

### A Warranty to have faith in

Corian® is durable, resistant and renewable and we issue straightforward use & care guidelines which, if properly followed, ensure that installations stay looking good. However, because we know this is not a perfect world and the unforeseen can happen – and because we have every faith in a product with a proven performance over 40 years, DuPont offers two levels of warranty protection for Corian®.

The basic product warranty is standard for all DuPont™ Corian® products and ensures the installation will be free of manufacturing defects for a period of 10 years after purchase. A higher level of coverage, the Limited Installed Warranty, which is only available when fabrication and installation are



carried out by a Corian® certified fabricator, also ensures that the fabrication and installation will be free of defects.

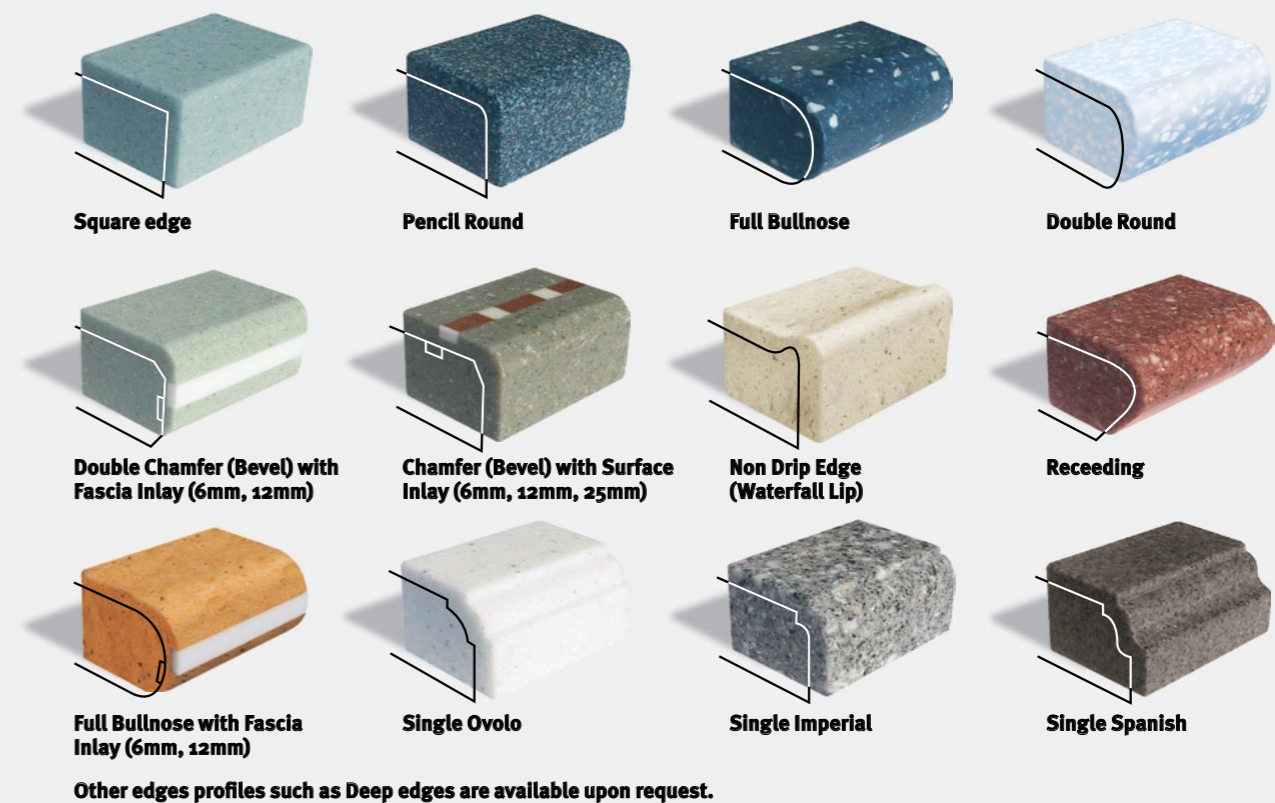
We have a dedicated Warranty Centre who will handle any queries and if any repair work is required, will refer you to a skilled and approved Service Centre. Maintenance contracts with these Service Centres are also available.

## On the edge of creativity

Give your DuPont™ Corian® a distinct edge. These are just a few of the edge treatments available for your application. Or create your own! Feel free to inlay contrasting colours of Corian® or even other materials.

### Edge details

A wide variety of stylish edge details are possible by exploiting the ability of DuPont™ Corian® to be seamlessly joined and easily worked. These include simple straight edge effects to rounded, bevelled, non-spill, bullnose and even inlaid for decorative effect. Any appearance from either slimline to an extra thick edge can be achieved to create whatever look is most suitable, both practically and aesthetically, for the design.



### Upstands & Splashbacks

There are two types of upstand available to work together with a countertop where it meets the wall, either square or coved. Full height 'splashbacks' can also be offered to further extend the benefits of Corian® as part of a design scheme. Silicone sealant is used to attach square upstands or splashbacks. DuPont™ joint adhesive is used to create a coved upstand or splashback, in which a smooth, rounded transition occurs between the countertop and wall, offering even greater ease of cleaning and hygiene, as well as a pleasingly sleek, flowing look. 6 mm sheet material is used to make full height splashbacks. Typically, a full height backsplash is adhered to the wall using silicone. 12 mm material may also be used to make a full height splashback if the desired sheet colour is not available in 6 mm thickness.





## Photos references: (from left to right, from top to bottom)

**Cover:** on top at the right: Cosmetic surgery clinic in Taiwan; design Michael Young and Katrin Pétursdóttir Young; at the bottom: Baumgartfoto/Sterling Surfaces - Oncology Centre in Bydgoszcz, Poland, 2008, photo CCI - Dentist studio Dr. Benguigui, Neuilly sur Seine, France; design by Luc Boulais, Photo Jean-Christophe Galmiche | **page 3:** Nephrology centre of Saint Denis, France, project by architect Jean-Baptiste Bouilloc; photo Ecliptique - Laurent Thion | **pages 4-5:** Baumgartfoto/Sterling Surfaces | **pages 6-7:** Main lobby and Admissions: Reception in healthcare facility, photo DuPont™ Corian® - Exterior Cladding: Seeko Hotel (Bordeaux, France), external cladding in DuPont™ Corian®; project by Atelier King Kong Architects (Bordeaux, France); photo Arthur Pequin - Nurses' stations: Healthcare laboratory; photo DuPont™ Corian® - Neonatal and Pediatrics: Crèche collective (124 bd de Ménilmontant), Paris, France; interior design by Valérie Vaudou; photo BFPRO | **page 8:** on top: Medical centre in Germany: scrubbing area made with DuPont™ Corian®, photo DuPont™ Corian® | **page 9:** Dentist studio Dr. Benguigui, Neuilly sur Seine, France; design by Luc Boulais, Photo Jean-Christophe Galmiche - Oncology Centre in Bydgoszcz, Poland, 2008, photo CCI - Workdesks in the Temple Bone Laboratory in the Hearing Pathology Institute in Kajetany, Poland, photo CCI - Vertical interior cladding in hospital; photo DuPont™ Corian® | **page 11:** Area for children in hospital; photo DuPont™ Corian® - 3 pictures in the middle: Crèche collective (124 bd de Ménilmontant), Paris, France; interior design by Valérie Vaudou; photo BFPRO | **page 12:** at the bottom: Scrub area concept /DuPont stand at 2001 Batimat, France); photo DuPont™ Corian® | **page 14:** DCDS in NYC, Exclusively manufactured by Evans & Paul for Skytron

The installations, products and designs made with/in DuPont™ Corian® which are shown in the images included in this brochure are either products/creations of DuPont or are products/creations of other companies, architects, designers, individuals or organizations. All these products/creations are shown with the goal of communicating to the readers of this brochure the design and fabrication versatility and the wide application possibilities of DuPont™ Corian®.

DuPont does not accept responsibility for the commercial availability, the properties and the performance of products/creations done by companies, architects, designers, individuals or organizations.

Individuals or organizations interested in knowing more about the products/creations of DuPont should contact DuPont; individuals or organizations interested in knowing more about the products/creations of other companies, architects, designers, individuals or organizations should contact these other parties (see list of photo-credits above).

All the products/creations of other companies architects, designers, individuals or organizations which are shown in this brochure are intellectual property of the respective owners. Nothing in this brochure can be considered a direct or indirect invitation or suggestion to violate the intellectual property, the copyright or the patents owned by other companies, architects, designers, individuals or organizations.

<b>Austria</b>	<b>0800/29 5833</b>	<b>Nordic Countries</b>	<b>++46 31 57 68 00</b>
<b>Belgium</b>	<b>0800/96 666</b>	<b>Pakistan, Middle East, Africa, Malta &amp; Cyprus</b>	<b>++971 4 321 1530</b>
<b>Central &amp; Eastern Europe</b>	<b>++420 257 414 213</b>	<b>Poland</b>	<b>++48 22 320 0900</b>
<b>Germany</b>	<b>0800/1810018</b>	<b>Portugal</b>	<b>++351 227 536 900</b>
<b>Spain</b>	<b>901/120 089</b>	<b>Romania, Bulgaria &amp; Serbia</b>	<b>++40 31 62 04 111</b>
<b>France</b>	<b>0800/91 72 72</b>	<b>Russia</b>	<b>++7 495 797 22 00</b>
<b>Greece</b>	<b>++30 22950 44020</b>	<b>Serbia, Montenegro, Bosnia and Herzegovina</b>	<b>++381 63 265 935</b>
<b>Italy</b>	<b>800/876750</b>	<b>Slovakia &amp; Hungary</b>	<b>++420 257 414 213</b>
<b>Ireland</b>	<b>1800/553 252</b>	<b>Turkey, Israel &amp; Central Asia*</b>	<b>++90 212 340 0400</b>
<b>Kazakhstan</b>	<b>++7 727 261 90 28</b>	<b>* = Azerbaijan, Turkmenistan, Uzbekistan and Kyrgyzstan</b>	
<b>Luxembourg</b>	<b>800/23079</b>	<b>United Kingdom</b>	<b>0800/962 116</b>
<b>Netherlands</b>	<b>0800/022 35 00</b>	<b>Ukraine</b>	<b>++380 50 310 79 19</b>

### Headquarters:

**Du Pont de Nemours International S.A.**  
**++41 22 717 51 11**

**Web Shop hotline: +800 6583-6000**  
**or e-mail: [service@surfaces-shop.com](mailto:service@surfaces-shop.com)**

**[www.corian.co.uk](http://www.corian.co.uk)**  
**[www.corian.com](http://www.corian.com)**



*The miracles of science™*