

*Note – this newsletter is now available online in our Members Club, where you will also find all the speaker presentations, information about enhancements, and many other useful pieces of information.*

## Istug Meeting, June 2006 IBM Warwick

I would like to thank all the presenters who took the time to attend the June meeting at IBM Warwick.

Andy Cunningham, Cunningham Blythe Ltd, showed delegates Sage Paperless & Sage Paperless DocStore. Sage Paperless will enable you to eliminate pre-printed stationery costs and hard-copy filing. Sage Paperless DocStore is an efficient, easily accessible document archiving system.



*Andy Cunningham, Cunningham Blythe Ltd*

Chris Blythe, Cunningham Blythe Ltd, explained to delegates what you need to know, how to prepare and what the associated costs are; workload, time and expense for upgrading to Sage Line 500 V6.0.



*Chris Blythe, Cunningham Blythe Ltd*



*Rick Jones, Sage*

Rick Jones from Sage gave an introduction to FCEs and Line 500 APIs: FCEs - Form Control Extensions - are user-written software modules that integrate into the Line 500 user interface. They can be used to extend the functionality of Line 500 in a wide variety of ways. Possible uses include: custom data-entry validation, external browse and import, connection to external applications, etc.

The APIs are a new facility introduced with Line 500 v6, which offer a simple but flexible programming interface for accessing Line 500 application functionality.

All these presentations are available on the Members News Page of the website.

I would also like to thank the attendees from Sage Line 500 R&D who took the time to come to the meeting and request feedback from delegates on the user help/documentation, by using a short questionnaire. I know that they value users' opinions and would like to involve the users more in their plans for changes. This is not the first Istug meeting they have attended and I hope that they will continue to be involved with Istug and include members in their discussions about the future of the product.

### In This Issue

- Dates for Your Diary
- Istug Meeting June 2006
- Istug Conference 2006
- **!! NEW !!** Incentives for Istug Members
- Top Tips

# Dates for Your Diary in 2006/7

## Istug 2006 Conference

9-10 October 2006 at the Village Bournemouth Hotel & Leisure Club

*"Excellent opportunity to talk to fellow users to discuss their solutions to common problems."*

*"A most valuable event. This is the first time I have personally attended, but I found it very useful!"*

## Istug Meetings

14/11/06 - Committee Meeting, Sage Winnersh

05/12/06 – Istug Meeting, Sage Winnersh

13/02/07 – Istug Meeting & AGM, Sage Newcastle

The agenda for all the above meetings where relevant will be published on the ISTUG Web Site at [www.istug.com](http://www.istug.com). Full online booking facilities exist, non-members may be asked to pay a guest fee, and where this is the case full details will be given at the time of booking.

## MBE Voting - update

The process for voting on Sage system enhancement requests has now changed and the MBE system for voting has been replaced by a "Wish List" for Line 200 and Line 500 product enhancements.

Sage will ask people to grade each suggestion on a scale of 1-6. All items have come from their database of enhancement requests and the first list included the ten runners up from the last MBE list. The items are not just the smaller requests - the survey includes a wide range of items, some quite large. Sage will be devoting a larger proportion of their development resource than ever before to the customer voted items from this list.

## Sage Documentation

You can now access Sage Line 500 Version 6 Release documentation and copies of S-Magazine on the Members News Page of the website.

## Reminder

Please can I remind you that we are run purely on member subscriptions and without them, we would not be able to provide the service that we do to our members.

Recently we have had many subscriptions paid late, or have had to send reminders to members – we do not like having to do this. If the invoice from Istug should be addressed to someone other than the Istug member, please let us know; this will prevent invoices from "going astray" or not getting through to the correct addressee.

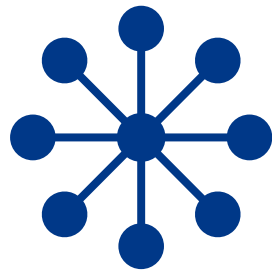
Many thanks for your help.

## Meeting Topics

Please can you send any articles for the next newsletter to Nicole James, Istug Technical Director. Anything you would like to be published is acceptable – letters to the editor, user stories, hints and tips, comments on Istug and the way we do, or do not, fulfil members requirements. We are here for YOU and this is YOUR newsletter.

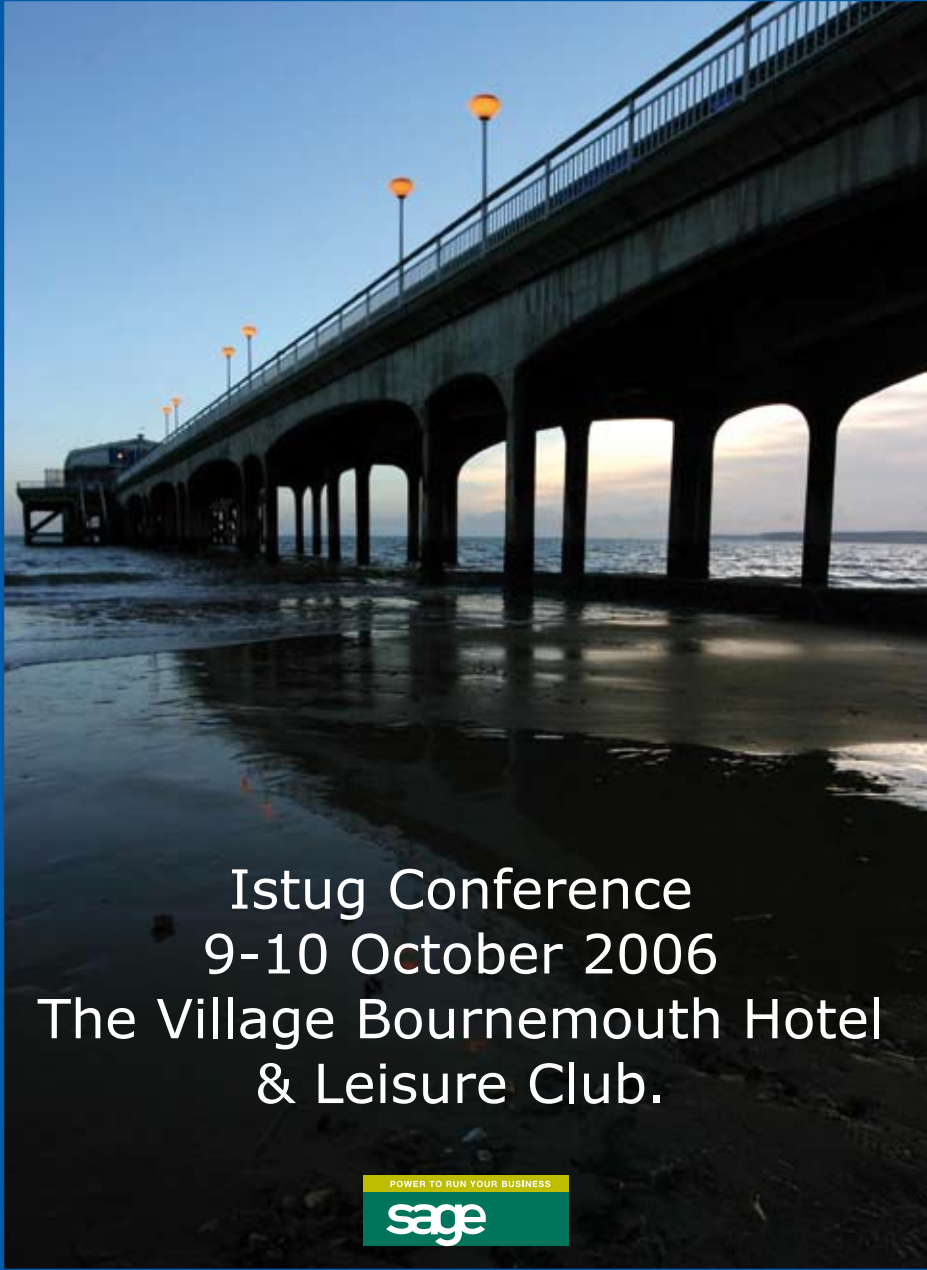
## Newsletter Articles

If any of you have a specific topic you would like to see covered at a future meeting, please contact Nicole James, Istug Technical Director. We are open to all suggestions. We are also in need of members who are willing to present to the group – it is YOUR user group, please get involved – if anyone would like to volunteer, please contact Nicole.




# ISTUG

INDEPENDENT SAGE USER NETWORK



Istug Conference  
9-10 October 2006  
The Village Bournemouth Hotel  
& Leisure Club.



In addition to the usual Sage Strategy Update, Third Party and User Presentations, Exhibition and Sage Product Roadmap the following are confirmed for the 2006 Istug Conference:

- Speak to a Sage Director/Senior Executive on a one-to-one basis for 40 minutes - pre-bookable slots on Monday 9 October from 11:15am onwards
- Sage "Clinic" - pre-bookable one-to-ones with Sage product specialists on the afternoon of Monday 9 October
- Sage BI Workshop - this will take place on the morning of Tuesday 10 October - places may be limited

If you are interested in these sessions, please contact Istug direct on 0118 9813223 or [njames@istug.com](mailto:njames@istug.com)

# Did you Know...?

## Chris Blythe's Top Tips for Summer

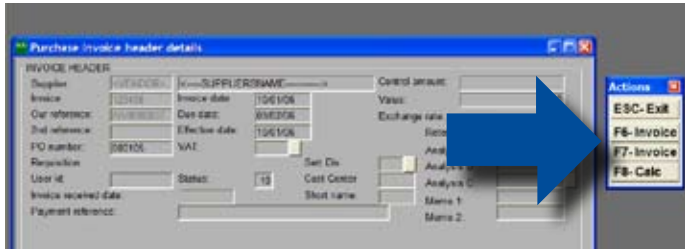
### How to speed up your POP invoice processing by a factor of 10!

This is a very well kept secret, and I have not seen it documented elsewhere – but it could change your POP invoice clerk’s life!

Few users bother to licence DA0467 – “Multiple A/P Payment lists” – which allows you to modify/pay/delete more than one payment run at the same time. For most users, it is simply not necessary.

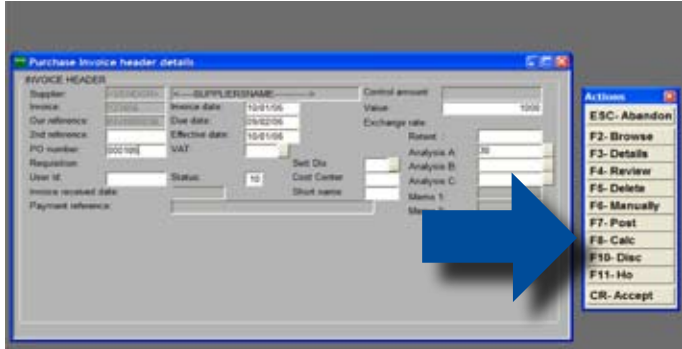
HOWEVER, if you do licence this project (which has been available for some years now), you will also find that POP invoice entry changes. (I don’t know why these two items of functionality are licenced together).

Without DA0467 licenced, invoice entry includes the button “F8 Calc” which calculates/checks the VAT amount.

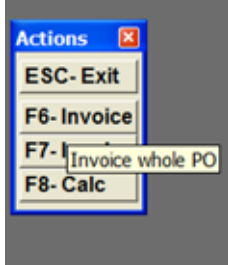


Which gives the informative choice of F6 – Invoice, or F7 –Invoice(!)

“Hovering” over the F6 button shows the whole message “Invoice whole PO”; this will create an invoice line for everything on the order, regardless of what has been received.

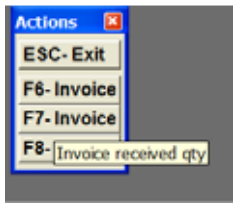


With DA0467 licenced, the F8 button changes to “more”;

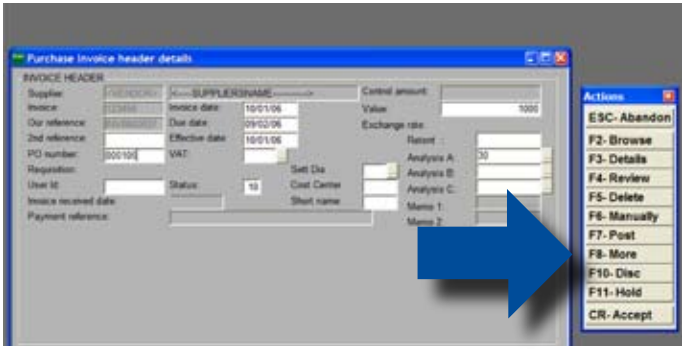


Hovering over the F7 button shows the whole message “Invoice received qty”; this will create an invoice line for everything that has actually been received.

(The “F8 – Calc” to check/calculate the VAT also now appears here.)



Where a supplier delivers all of a multi-line order, which is common, this is a MAJOR time saving over entering each line manually.



When you press “F8 – More”, you then get more options: (surprise!)

You could also set up a POP service code to write off small overall invoice differences rather than identify which line they relate to. I suggest that you limit this to small amounts. You can of course check the complete history of such write offs from the POP history report.

Whilst this might make small inaccuracies in Purchase Price Variances, it can significantly speed up invoice entry.

Happy invoice punching!