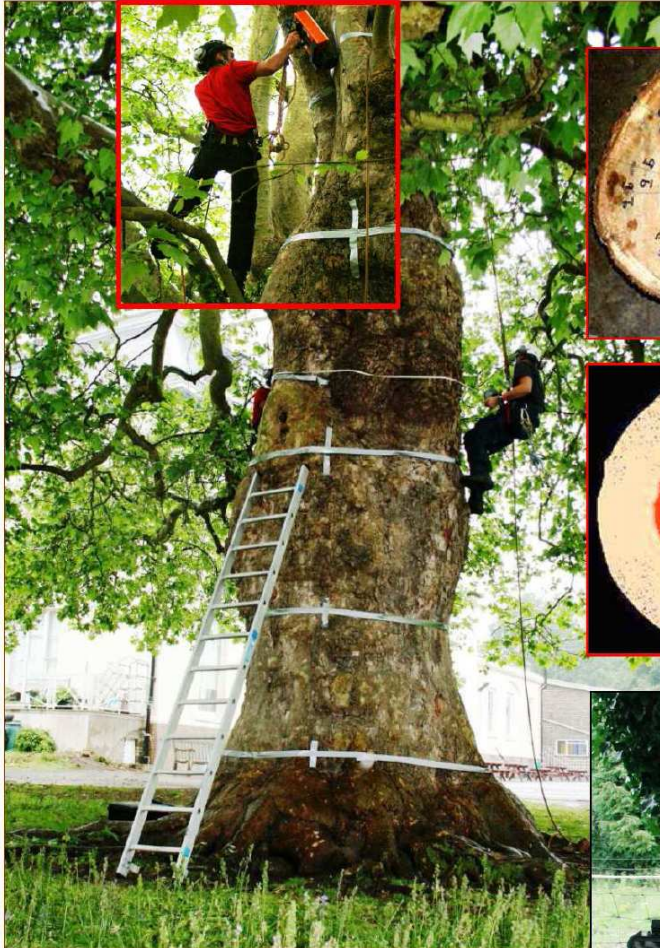
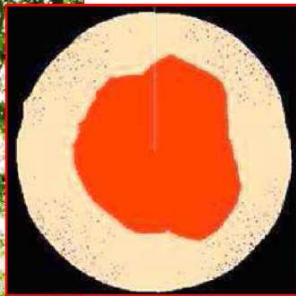




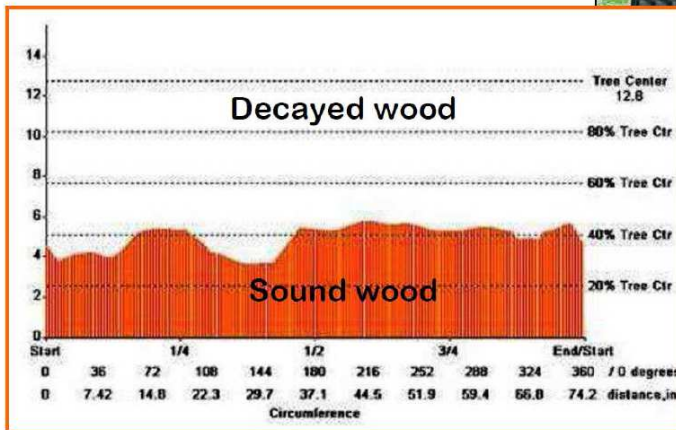
TREERADAR Decay Detection



Actual decay



TreeRadar plot



TreeRadar predicts remaining sound wood

Expertise from **pba** Consulting

www.pba-consulting.co.uk

Bryn Gardens, Liss, GU33 7HB. T: 01730 893460



TREERADAR Decay Detection



TreeRadar scanning internal section of a tree

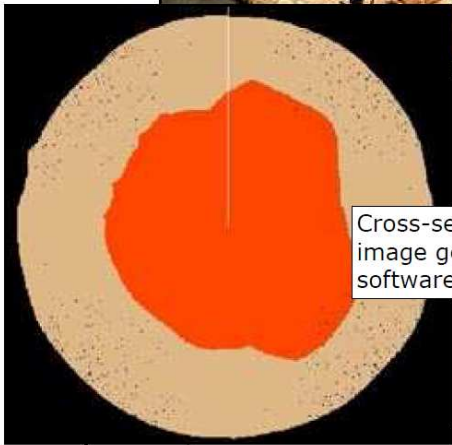
TreeRadar™ for decay detection – How does it work?

When radar pulses encounter a boundary between objects with different properties, the electromagnetic waves will reflect, refract, and/or diffract from the boundary in a predictable manner.



Cross section showing extent of decay

Decayed and sound wood in trees have different properties, the electromagnetic waves will therefore, reflect, refract, and/or diffract accordingly.



Cross-section decay image generated by software

These electromagnetic differences are analysed by the software and provides reliable data printouts of depth and location of internal tree decay.

The quantifiable results are used by competent arboriculturalists to assess the risk of trees whose health and structural integrity may have been compromised by decay and loss of solid wood.

